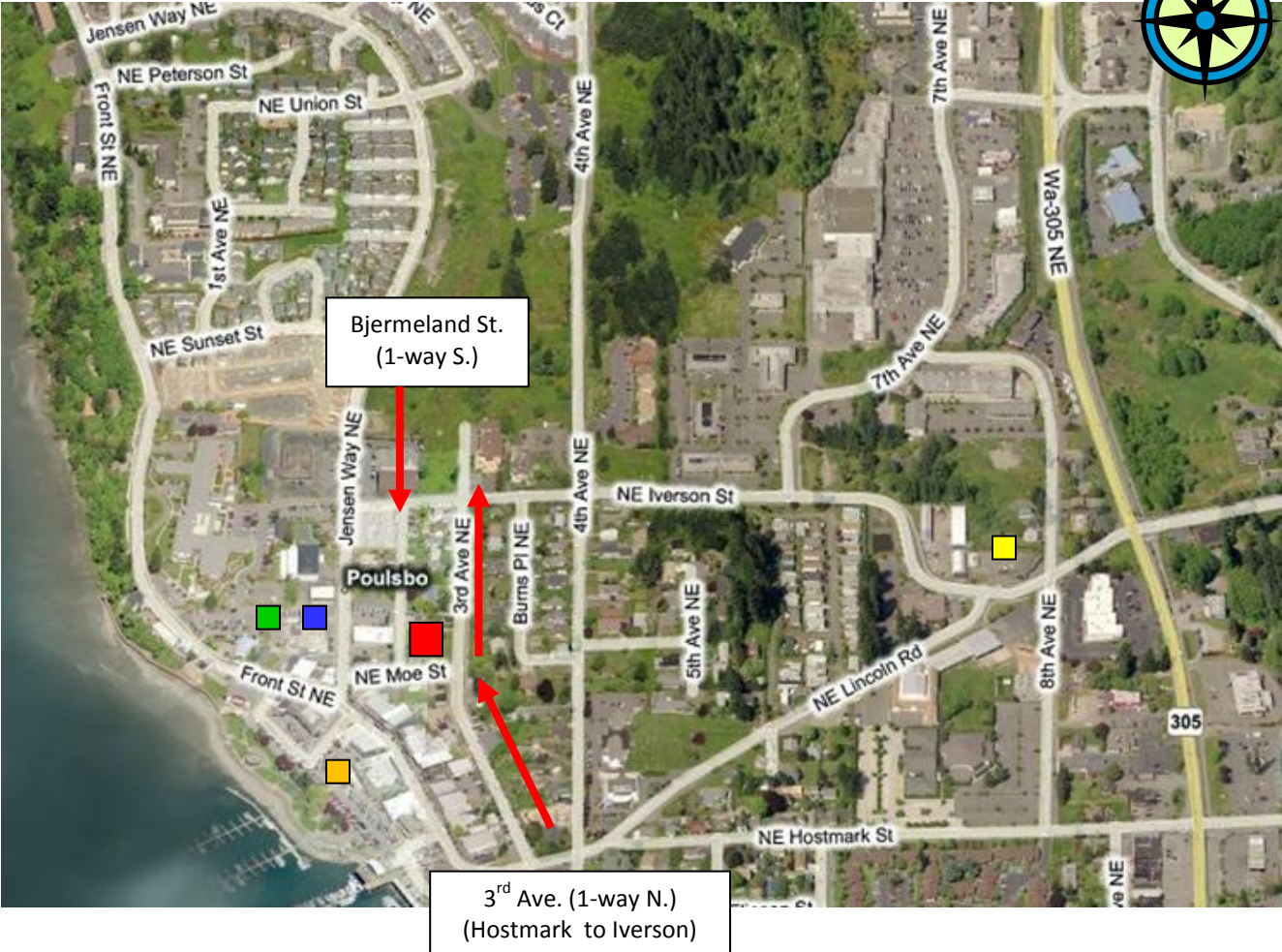


POULSBO CITY HALL
200 NE Moe St.



LEGEND

- New City Hall – 200 NE Moe St.
- Former City Hall – 19050 Jensen Way NE
- King Olaf Parking Lot
- Anderson Parkway
- Public Works Shop and former Public Works Admin.

PARKING

City Hall Garage: Free public parking is located in the underground parking garage of City Hall. Space is limited. Access to the garage is from Bjermeland Street. Although Bjermeland is one-way south, you can turn north from Moe onto Bjermeland for garage access. An elevator is located on the south side of the garage for access to all office floors.

On-street: Free parking is available on Moe St. (3-hour limit), 3rd Avenue (not posted), and Jensen Way (1-hour limit). There is no public parking on Bjermeland Street.

King Olaf Parking Lot: Free parking is available behind the former City Hall. The lot is accessible from Front Street or from Jensen Way (via a driveway on the north end of the former City Hall).

Anderson Parkway: Free parking (3-hour limit)