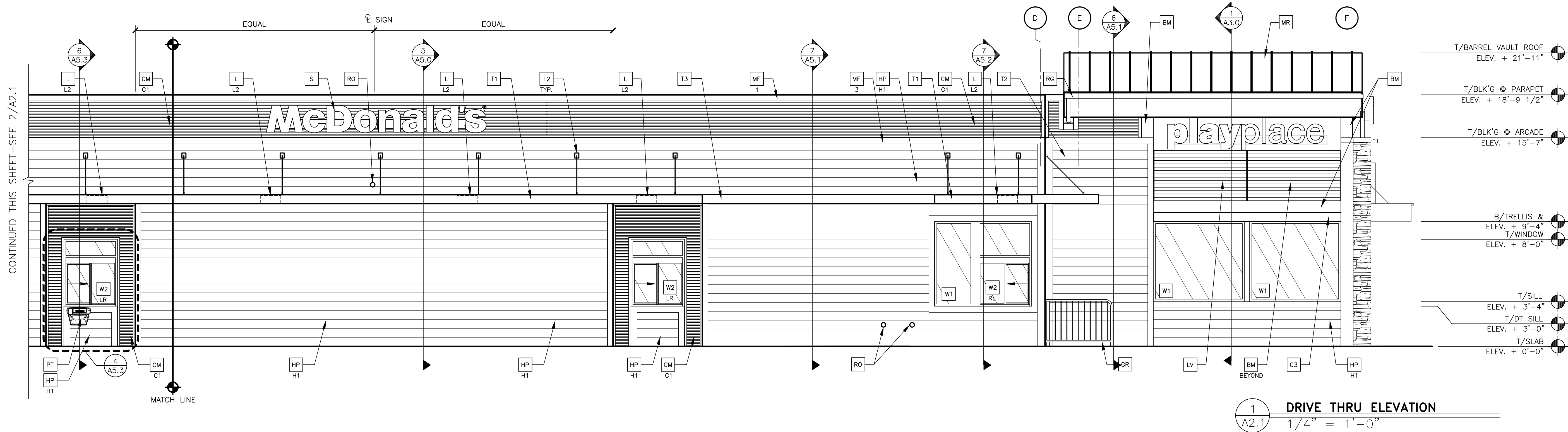


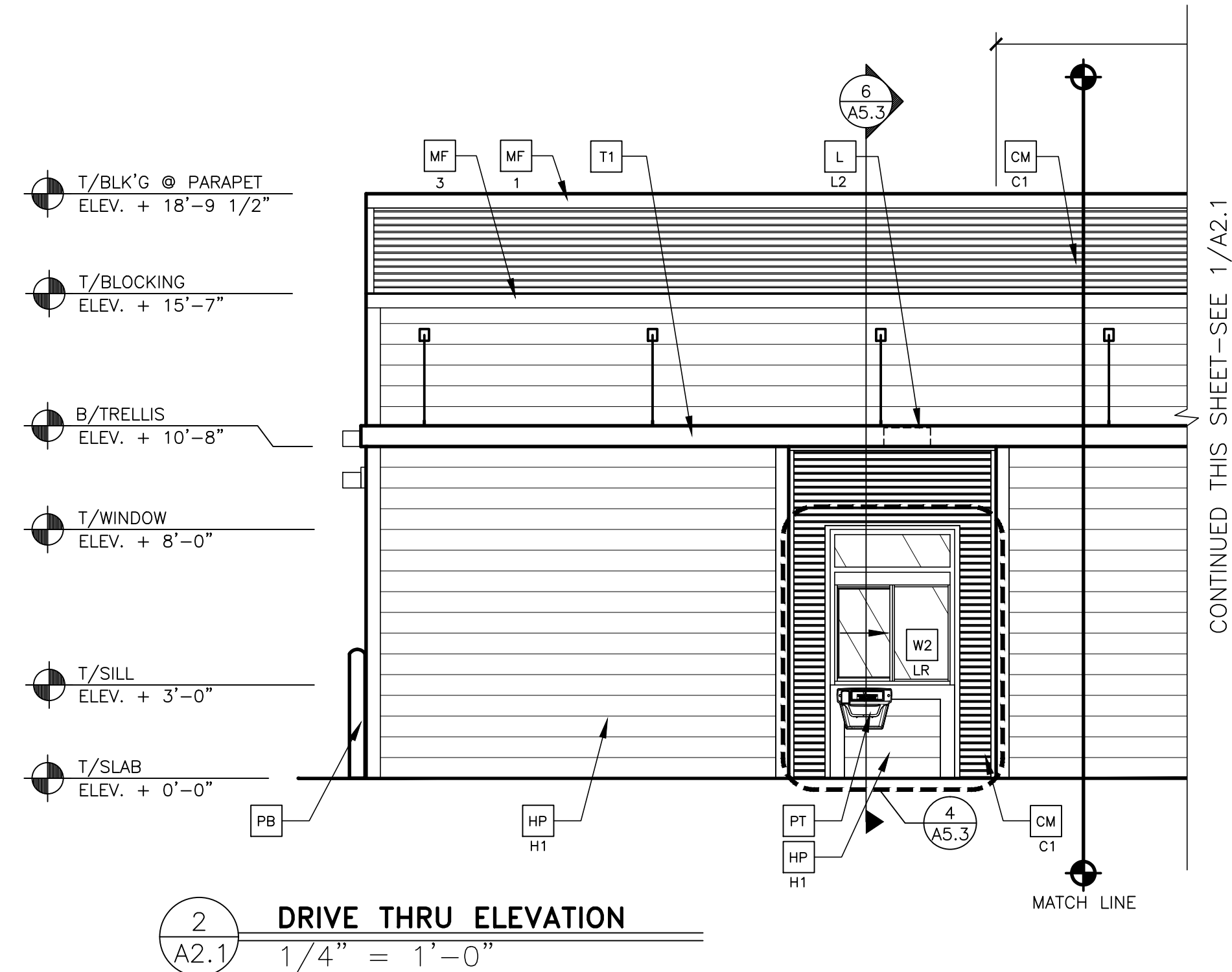
K:\STD\STANDARD\PRELIM\2011 STANDARD BUILDINGS - APRIL 2012 RELEASE\45 BT PP - WW (FULL)\XXX-XXX-XXX-XX-X\A-ELEV.DWG 06-29-2012 09:06



CONTINUED THIS SHEET-SEE 2/A2.1

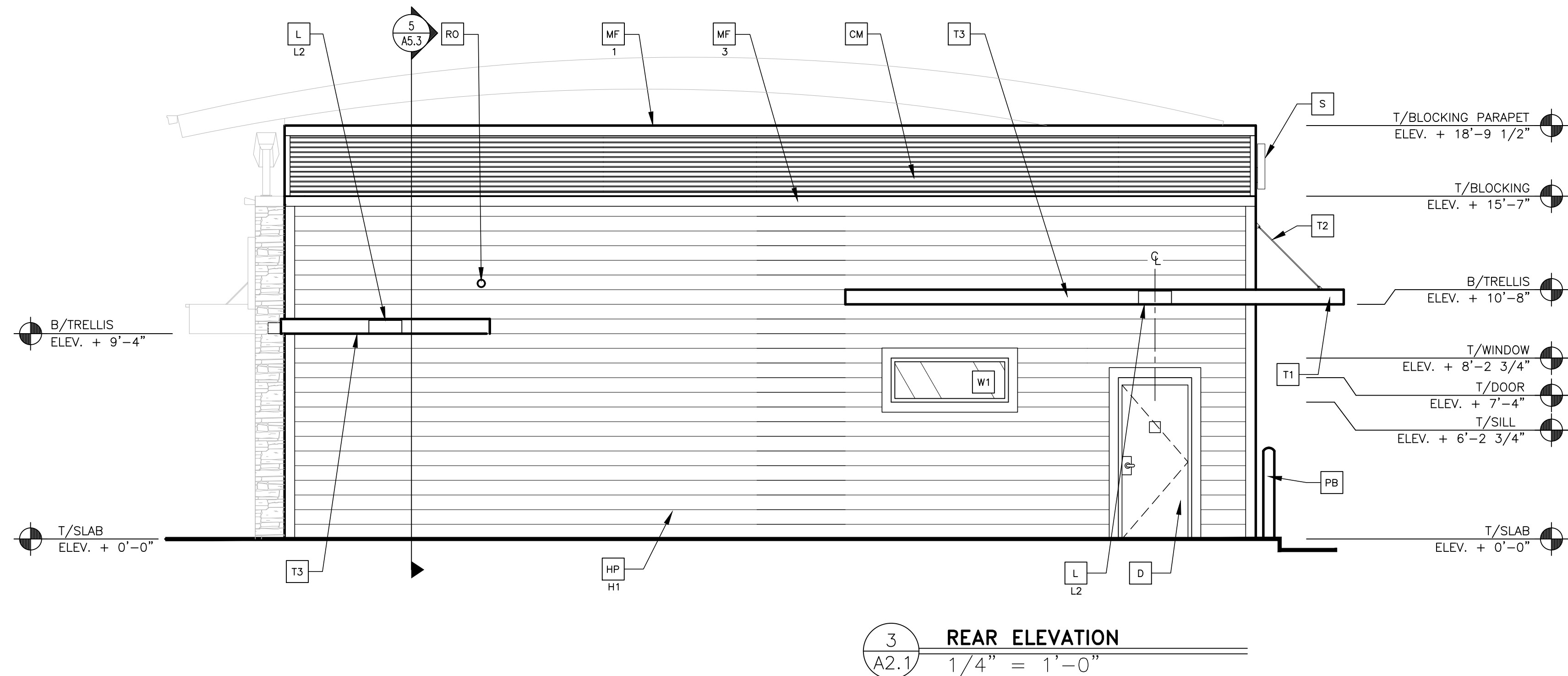
- T/BARREL VAULT ROOF
ELEV. + 21'-11"
- T/BLK'G @ PARAPET
ELEV. + 18'-9 1/2"
- T/BLK'G @ ARCADE
ELEV. + 15'-7"
- B/TRELLIS &
T/WINDOW
ELEV. + 8'-0"
- T/SILL
ELEV. + 3'-4"
- T/DT SILL
ELEV. + 3'-0"
- T/SLAB
ELEV. + 0'-0"

1 DRIVE THRU ELEVATION
1/4" = 1'-0"



- T/BLK'G @ PARAPET
ELEV. + 18'-9 1/2"
- T/BLOCKING
ELEV. + 15'-7"
- B/TRELLIS
ELEV. + 10'-8"
- T/WINDOW
ELEV. + 8'-0"
- T/SILL
ELEV. + 3'-0"
- T/SLAB
ELEV. + 0'-0"

2 DRIVE THRU ELEVATION
1/4" = 1'-0"



- B/TRELLIS
ELEV. + 9'-4"
- T/WINDOW
ELEV. + 8'-2 3/4"
- T/DOOR
ELEV. + 7'-4"
- T/SILL
ELEV. + 6'-2 3/4"
- T/SLAB
ELEV. + 0'-0"

3 REAR ELEVATION
1/4" = 1'-0"

KEY NOTES:

- BM BREAK METAL
COLOR = CITYSCAPE BY METAL-ERA
- C1 ALUMINUM CANOPY SYSTEM (COLOR: GOLD)
- C2 ALUMINUM CANOPY TIE-BACK SYSTEM
- C3 ALUMINUM CANOPY SYSTEM
- CM CORRUGATED METAL PANEL - SEE 1B/A5.0
- C1-COLOR:
C1 = "CITYSCAPE" BY METAL-ERA
- D HOLLOW METAL DOOR - PAINT TO MATCH COLOR OF SURROUNDING MATERIAL
- FB C02 = BULK CO2 FILL BOX (EQPM SCHEDULE ITEM 49.00)
B0 = BULK OIL FILL BOX (EQPM SCHEDULE ITEM 700.18) - CONFIRM USE WITH MCD PROJECT MANAGER
- GR GUARD RAIL - SEE SITE PLAN FOR EXACT LOCATION AND LENGTH
- HP CEDAR TEXTURE HARDI-BORARD PLANK BY JAMES HARDIE
- H1 COLOR: H1 = PAINT "MINK BM-2112-10" BY BENJAMIN MOORE
- L LIGHT FIXTURE (WALL SCONCE) - SEE ELECTRICAL
L1-L1 = UP AND DOWN FIXTURE
L2 = DOWN ONLY FIXTURE
- LE ACCENT LIGHTING - SEE ELECTRICAL
L1-LED LIGHT:
L1 = UP AND DOWN FIXTURE
L2 = DOWN ONLY FIXTURE
L3 = INTEGRAL CANOPY FIXTURE
L4 = UP ONLY FIXTURE
- LS "MCD PFSW BLEND" LEDGESTONE -BY BORAL
-CONTACT: KEVIN RIEDY, (717) 377-2746
- LV METAL LOUVER PANEL
- MF METAL FASCIA - COLOR TO MATCH CORRUGATED METAL PANEL - SEE 1/A5.0
1-TYPE:
1 = PRE-FAB ANCHOR-TITE FASCIA
2 = PRE-FAB CUSTOM ARCADE FASCIA
3 = PRE-FAB MASONRY CAP FASCIA
- ML METAL LETTERING - BY OTHERS
- MR METAL ROOF - STANDING SEAM W/ALUMINUM FINISH FASCIA TRIM, COLOR TO BE "GOLD" - PANTONE COLOR #123C
- PB PIPE BOLLARD - PAINTED YELLOW
- PT (RMHC) COIN COLLECTOR UNIT ##WPT DT2000 STD CALL 1-888-743-7435 TO ORDER
- RE ROOF CAP ELEMENT BY OTHERS
- RG CONTINUOUS RAIN GUTTERS AT BARREL VAULT ROOF COLOR TO MATCH ROOF
- RO ROOF DRAIN OVERFLOW PIPE PAINT TO MATCH SURROUNDING MATERIAL
- S McDONALD'S SIGNAGE BY OTHERS - UNDER SEPARATE PERMIT.
- T1 ALUMINUM TRELLIS SYSTEM
- T2 TRELLIS TIE-BACK SYSTEM
- T3 ALUMINUM TRELLIS 2" x 8" WALL FASCIA SYSTEM
- W1 EXTERIOR WINDOW ASSEMBLY - TEMPERED GLASS - SEE ASSEMBLY NOTES
- W2 DRIVE-THRU WINDOW BY READY ACCESS 600 SERIES, 36" SERVICE HEIGHT WITH TRANSOM - MANUAL OPEN; ELECTRONIC RELEASE

TITLE	2014 STANDARD BUILDING	4597-5 FRONT-PP-WOOD/WOOD	46-0134.00.0
SHEET NO.	A2.1 ELEVATIONS		
DESCRIPTION	WOOD BEARING WALLS W/HARDIPLANK EXTERIOR FINISH WOOD ROOF TRUSS FRAMING LEDGESTONE EXTERIOR FINISH ARCADE/ENTRY		
SITE ID	046-0134	SITE ADDRESS	20533 WING AVE NW POULSBORO, WA
C.S.G. PROJECT #	MCD.2.3582		
DATE ISSUED	1/3/2018	REVIEWED BY	PM: RP
STD ISSUE DATE	2017-10	DRAWN BY	EB
PREPARED FOR:	McDonald's USA, LLC		
REGISTERED ARCHITECT	JAMES HILL ARCHITECTS 1118 STATE OF WASHINGTON		
REV	DATE	DESCRIPTION	BY

11884 REGISTERED ARCHITECT
JAMES HILL ARCHITECTS
1118
STATE OF WASHINGTON

CORE STATES GROUP
4240 East Juniper Street, Suite 402
Ontario, CA 91764
Fax (909) 467-8917

© 2017 McDonald's USA, LLC
McDonald's USA, LLC
These drawings and specifications are the confidential and proprietary property of McDonald's USA, LLC and shall not be copied or reproduced without written authorization. The contractor shall not be permitted to use these drawings for use on a different site or at a later time. Use of these drawings for reference or reuse on another project requires the contract documents for reuse on another project is not authorized.