

Home Elevations and Description

Liberty Landing is a small, high quality development of eight cottage style homes located on an acre parcel walking distance from downtown Poulsbo. The homes are sized at 1377 square feet and 803 square feet for the two-story and single-story elevations respectively. The design tightly integrates architectural elements, home positioning and landscaping to create an aesthetic that is clean, appealing and efficient. Access is provided by two private drives off of Hamilton Court NE with each drive serving four homes.

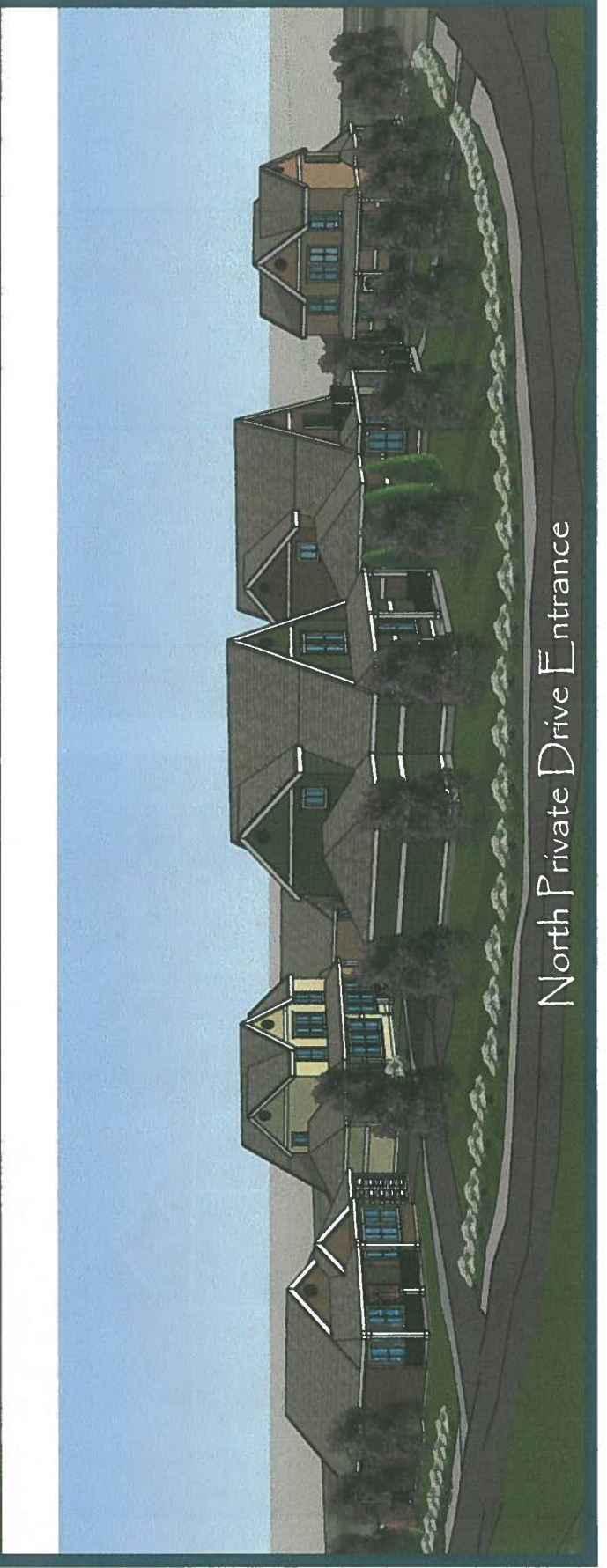
The homes are designed to incorporate the following elements:

1. Efficient space utilization minimizing hallway space and maximizing natural lighting
2. Master bedroom / Office with full bathroom on ground floor
3. Open Kitchen / Dining / Living room providing spacious living area
4. Partially Covered Patios with natural gas hookup for outdoor cooking
5. Shop / Storage space in garage
6. Forward looking design
 - o Prewired for EV charging station in garage
 - o Prewired for centrally located WiFi / Modem / Router
 - o Wiring chase for solar roofing shingles / inverter
7. Attractive fully trimmed cottage style exteriors with crown molding and sills on all windows, multiple siding textures divided by beltline, gabled roofs and subtle earth-tone color scheme.

Liberty Landing Street Perspectives



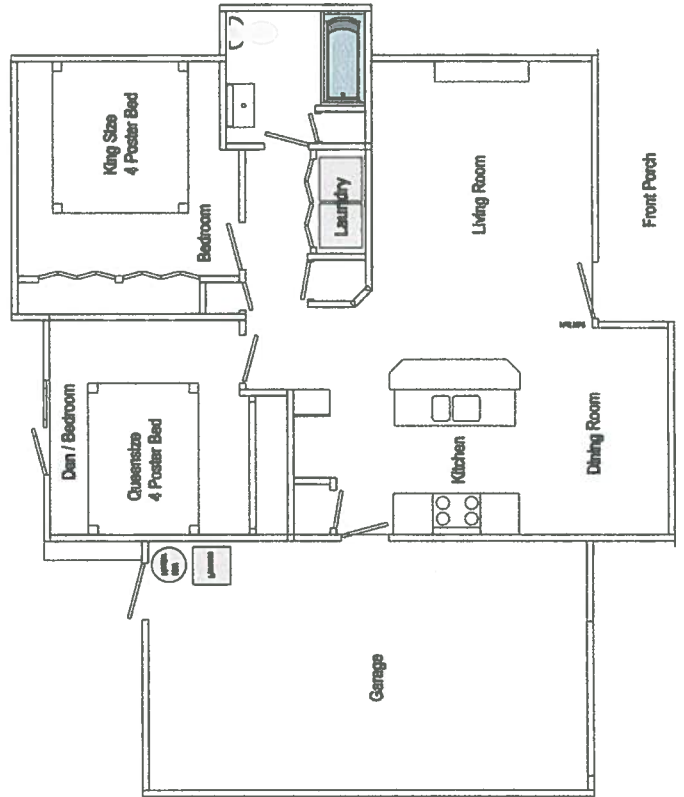
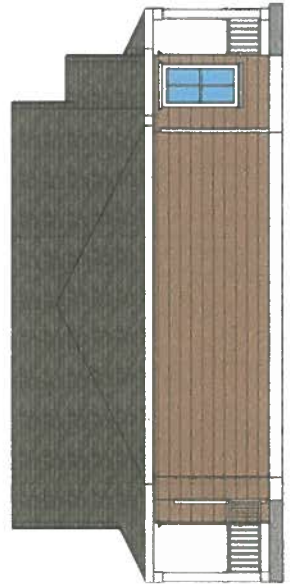
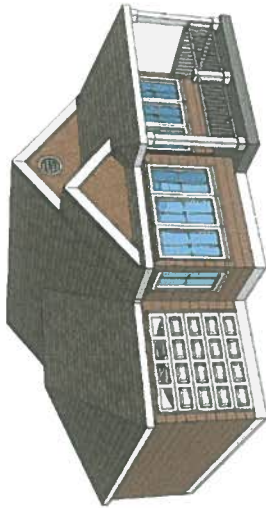
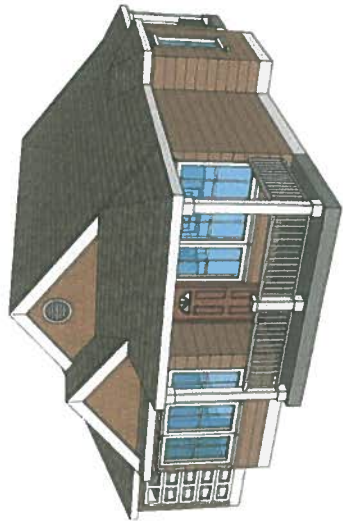
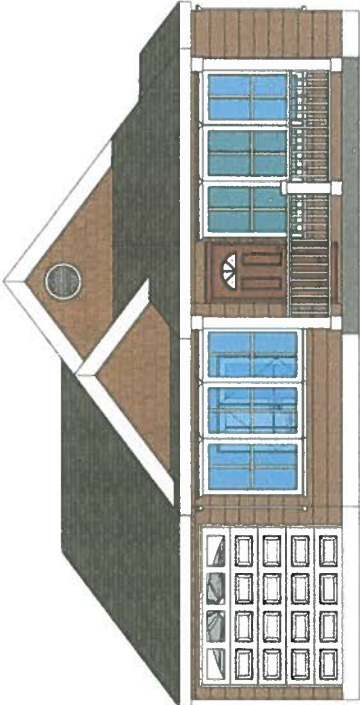
West Private Drive Entrance



North Private Drive Entrance

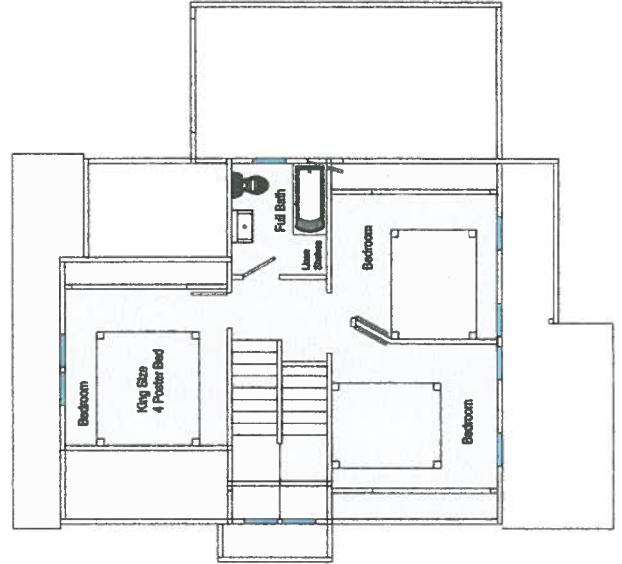
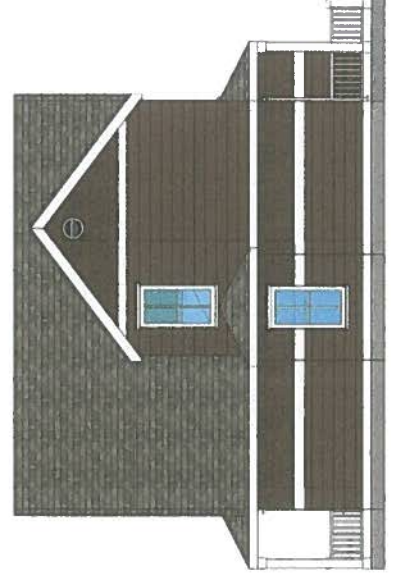
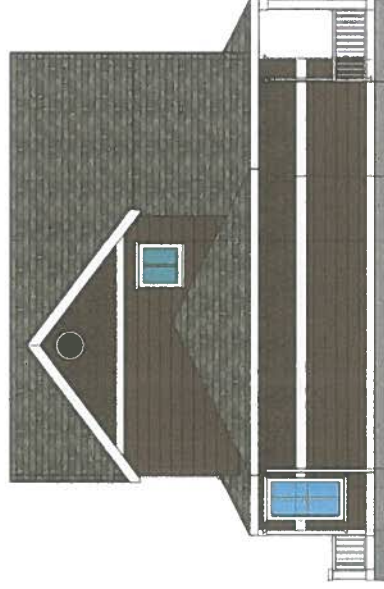
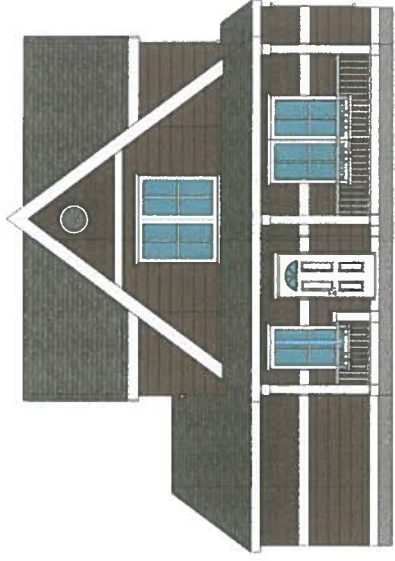
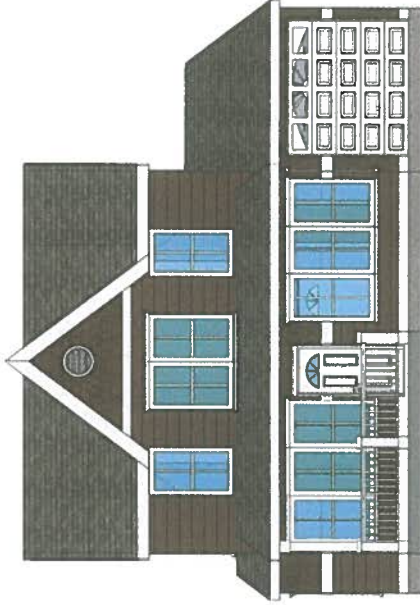
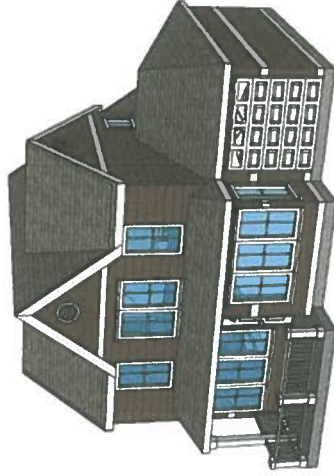
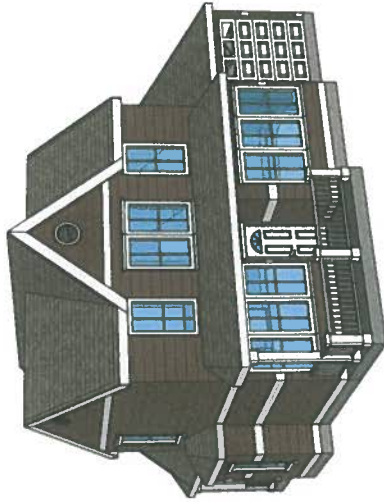
Rambler

- 2 Bed, 1 Bath
- 803 square feet
- 1 car garage



Two-Story

- 3 Bed, 2.5 Bath
- Den/Office/Bedroom
- 1377 square feet
- 1 car garage



Two-Story Alternative Elevations

