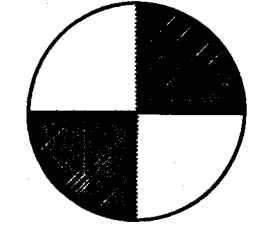
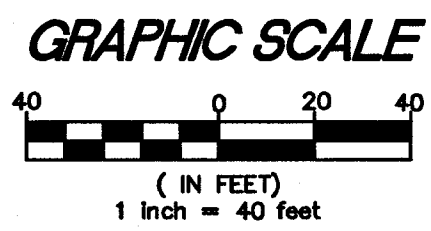
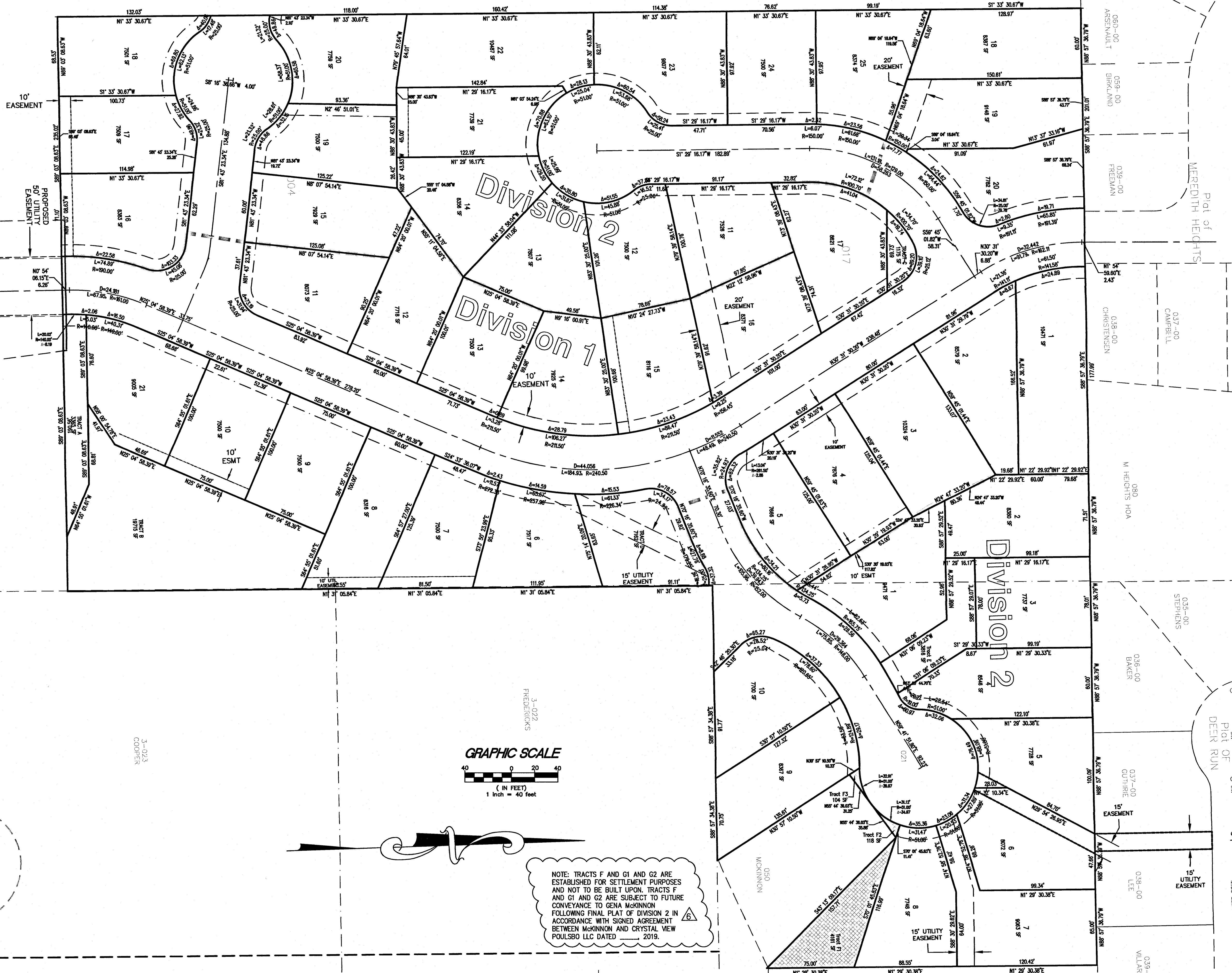


CRYSTAL VIEW PLAT MOD

HORIZONTAL CONTROL PLAN

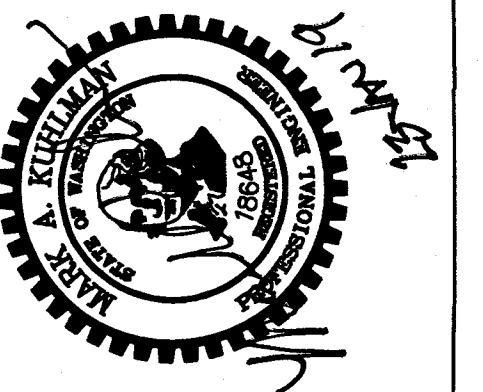


DATUM ELEV
NAVD 1988



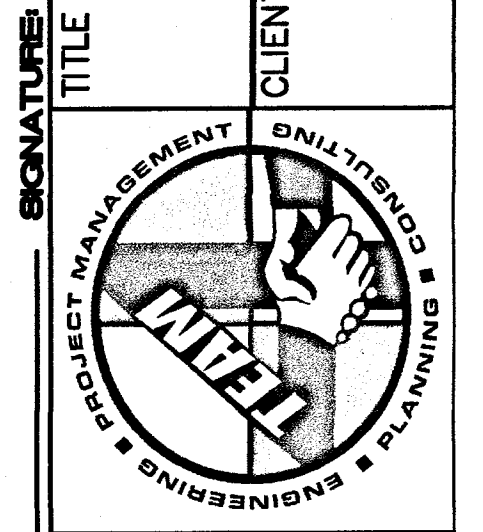
NOTE: TRACTS F AND G1 AND G2 ARE ESTABLISHED FOR SETTLEMENT PURPOSES AND NOT TO BE BUILT UPON. TRACTS F AND G1 AND G2 ARE SUBJECT TO FUTURE CONVEYANCE TO GENA MCKINNON FOLLOWING FINAL PLAT OF DIVISION 2 IN ACCORDANCE WITH SIGNED AGREEMENT BETWEEN MCKINNON AND CRYSTAL VIEW POULSBO LLC DATED 2019.

REV NO	REVISION DESCRIPTION	DATE	BY
1	FEB 24, 2016 CITY COMMENT #2	16.03.31	JAB
2	MAY 10, 2016 CITY COMMENT #2	16.05.25	JAB
3	JUNE 22, 2016 CITY COMMENTS	16.07.20	JAB
4	MINOR PLAT MODS	18.06.09	JAB
5	CITY COMMENTS TO PLAT MODS	18.11.08	JAB
6	CITY COMMENTS TO PLAT MOD	18.12.10	JAB



TITLE CRYSTAL VIEW PLAT MOD
HORIZONTAL CONTROL PLAN

CLIENT
CRYSTAL VIEW POULSBO LLC
% BARRY MARCOLESE
105 S MAIN STREET, STE 230
SEATTLE, WA 98104
208-910-2728



PROJECT MANAGER - JEFF A. BROWN

TEAM 4 ENGINEERING
5819 NE MINDER RD
POULSBO, WA 98370
(360) 297-5560
(360) 297-7951 (FAX)

C:\1738\1738 CG MASTER.dwg, 2 HORIZONTAL CONTROL PLAN, 1/21/2019 2:18:51 PM