

Draft *Regional Transportation Plan 2040* Available for Public Review and Comment



Peninsula Regional Transportation Planning Organization (**PRTPO**) invites the public to review and comment on the draft Regional Transportation Plan 2040 for the Peninsula Region. This long-range policy plan establishes a vision, goals and policies for the four-county Peninsula region. This update of the 2035 plan extends the planning horizon to 2040, refreshes goals and policies, and offers a range of regional strategies to maintain and improve the region's transportation system.

The public comment period extends from September 3 – October 18. An open house is scheduled to kick off the review process and increase awareness about the plan and PRTPO. Drop in to learn about the plan and talk about transportation issues and opportunities facing the region.

OPEN HOUSE
Tuesday, September 3
4:30 – 6:30 pm

Port Angeles Main Library
2210 South Peabody Street, Port Angeles
Take Clallam Transit Route 22



Comments on the draft plan will be accepted until noon on Friday, October 18, 2019.

Please submit comments by mail or email:

Edward Coviello
Kitsap Transit
60 Washington Avenue, Suite 200
Bremerton, WA 98337
Email: edwardc@kitsaptransit.com

PRTPO is the regional transportation planning organization for the Clallam-Jefferson-Kitsap-Mason County region. PRTPO is made up of representatives from the counties, cities, tribes, transit agencies, and port districts within the region, and WSDOT Olympic Region. Its members work together to identify and address transportation and mobility issues affecting the region. PRTPO and its members are committed to coordinated planning and decision-making that supports safe, efficient, reliable travel choices for communities, visitors, and businesses on the Olympic Peninsula.

For more information on PRTPO and its regional transportation program, please visit <https://prtpo.kitsaptransit.com/default.htm> or call Ed Coviello at 360.824.4919.

Draft *Regional Transportation Plan 2040* Available for Public Review and Comment



Peninsula Regional Transportation Planning Organization (**PRTPO**) invites the public to review and comment on the draft Regional Transportation Plan 2040 for the Peninsula Region. This long-range policy plan establishes a vision, goals and policies for the four-county Peninsula region. This update of the 2035 plan extends the planning horizon to 2040, refreshes goals and policies, and offers a range of regional strategies to maintain and improve the region's transportation system.

The public comment period extends from September 3 – October 18. An open house is scheduled to kick off the review process and increase awareness about the plan and PRTPO. Drop in to learn about the plan and talk about transportation issues and opportunities facing the region.

OPEN HOUSE

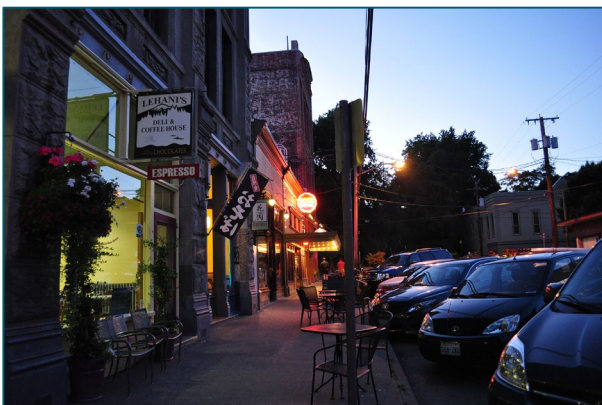
Wednesday, September 4

4:30 – 6:30 pm

Port Townsend Public Library

1220 Lawrence Street, Port Townsend

Take Jefferson Transit Routes 1, 6A, 8, 11A, 11B



Comments on the draft plan will be accepted until noon on Friday, October 18, 2019.

Please submit comments by mail or email:

Edward Coviello

Kitsap Transit

60 Washington Avenue, Suite 200

Bremerton, WA 98337

Email: edwardc@kitsaptransit.com

PRTPO is the regional transportation planning organization for the Clallam-Jefferson-Kitsap-Mason County region. PRTPO is made up of representatives from the counties, cities, tribes, transit agencies, and port districts within the region, and WSDOT Olympic Region. Its members work together to identify and address transportation and mobility issues affecting the region. PRTPO and its members are committed to coordinated planning and decision-making that supports safe, efficient, reliable travel choices for communities, visitors, and businesses on the Olympic Peninsula.

For more information on PRTPO and its regional transportation program, please visit <https://prtpo.kitsaptransit.com/default.htm> or call Ed Coviello at 360.824.4919.

Draft *Regional Transportation Plan 2040* Available for Public Review and Comment



Peninsula Regional Transportation Planning Organization (**PRTPO**) invites the public to review and comment on the draft Regional Transportation Plan 2040 for the Peninsula Region. This long-range policy plan establishes a vision, goals and policies for the four-county Peninsula region. This update of the 2035 plan extends the planning horizon to 2040, refreshes goals and policies, and offers a range of regional strategies to maintain and improve the region's transportation system.

The public comment period extends from September 3 – October 18. An open house is scheduled to kick off the review process and increase awareness about the plan and PRTPO. Drop in to learn about the plan and talk about transportation issues and opportunities facing the region.

OPEN HOUSE

Thursday, September 5 | 5:00 – 6:30 pm
Kitsap Transit – Bremerton Harborside Office,
3rd Floor Conference Room

60 Washington Avenue, Bremerton

The Harborside Office is next to the Bremerton Transit Center and is served by many Kitsap Transit routes. See www.kitsaptransit.com for details.



Comments on the draft plan will be accepted until noon on Friday, October 18, 2019.

Please submit comments by mail or email:

Edward Coviello

Kitsap Transit

60 Washington Avenue, Suite 200

Bremerton, WA 98337

Email: edwardc@kitsaptransit.com

PRTPO is the regional transportation planning organization for the Clallam-Jefferson-Kitsap-Mason County region. PRTPO is made up of representatives from the counties, cities, tribes, transit agencies, and port districts within the region, and WSDOT Olympic Region. Its members work together to identify and address transportation and mobility issues affecting the region. PRTPO and its members are committed to coordinated planning and decision-making that supports safe, efficient, reliable travel choices for communities, visitors, and businesses on the Olympic Peninsula.

For more information on PRTPO and its regional transportation program, please visit <https://prtpo.kitsaptransit.com/default.htm> or call Ed Coviello at 360.824.4919.

Draft *Regional Transportation Plan 2040* Available for Public Review and Comment



Peninsula Regional Transportation Planning Organization (**PRTPO**) invites the public to review and comment on the draft Regional Transportation Plan 2040 for the Peninsula Region. This long-range policy plan establishes a vision, goals and policies for the four-county Peninsula region. This update of the 2035 plan extends the planning horizon to 2040, refreshes goals and policies, and offers a range of regional strategies to maintain and improve the region's transportation system.

The public comment period extends from September 3 – October 18. An open house is scheduled to kick off the review process and increase awareness about the plan and PRTPO. Drop in to learn about the plan and talk about transportation issues and opportunities facing the region.

OPEN HOUSE
Wednesday, September 11
4:30 – 6:00 pm
Shelton Timberland Library
710 W. Alder Street, Shelton
Take Mason Transit Route 5



Comments on the draft plan will be accepted until noon on Friday, October 18, 2019.

Please submit comments by mail or email:

Edward Coviello

Kitsap Transit

60 Washington Avenue, Suite 200

Bremerton, WA 98337

Email: edwardc@kitsaptransit.com

PRTPO is the regional transportation planning organization for the Clallam-Jefferson-Kitsap-Mason County region. PRTPO is made up of representatives from the counties, cities, tribes, transit agencies, and port districts within the region, and WSDOT Olympic Region. Its members work together to identify and address transportation and mobility issues affecting the region. PRTPO and its members are committed to coordinated planning and decision-making that supports safe, efficient, reliable travel choices for communities, visitors, and businesses on the Olympic Peninsula.

For more information on PRTPO and its regional transportation program, please visit <https://prtpo.kitsaptransit.com/default.htm> or call Ed Coviello at 360.824.4919.