

# PART 2 - POULSBO SISTER CITY MONUMENT

## SISTER CITIES

It has been noted by the Poulsbo Historical Society that Poulsbo has sister city relationships with Namsos and Halden in Norway.

There are many similarities between these sister cities as they share a rich maritime history and a strong cultural connection.

We see an opportunity for the Poulsbo community to build what will be one of the most relevant and enduring landmarks in the history of the city.

Our apartment project site offers an opportunity to go beyond a place for pedestrian to go for nice views. It could be developed as the place for a Sister City monument. Sound West Group would be interested in discussing this opportunity further. What follows are some ideas and concepts for what it could become.



VANAHEIMR APARTMENTS  
VIEW IMPACT STUDY

367 NE HOSTMARK ST  
POULSBO, WA 98370

NOVEMBER 30, 2018



Figure 1-9 Poulsbo, USA



Figure 1-10 Halden, Norway



Figure 1-11 Namsos, Norway



**BOUNDARIES:** edges, nodes, landmarks, amenities

The project reinforces the various landmarks and boundaries located around Poulsbo's waterfront along the Liberty Bay. A Viking Statue provides a marker on the north-end of downtown Poulsbo. The *Sister City Monument* will provide a marker for the south-end of the town.

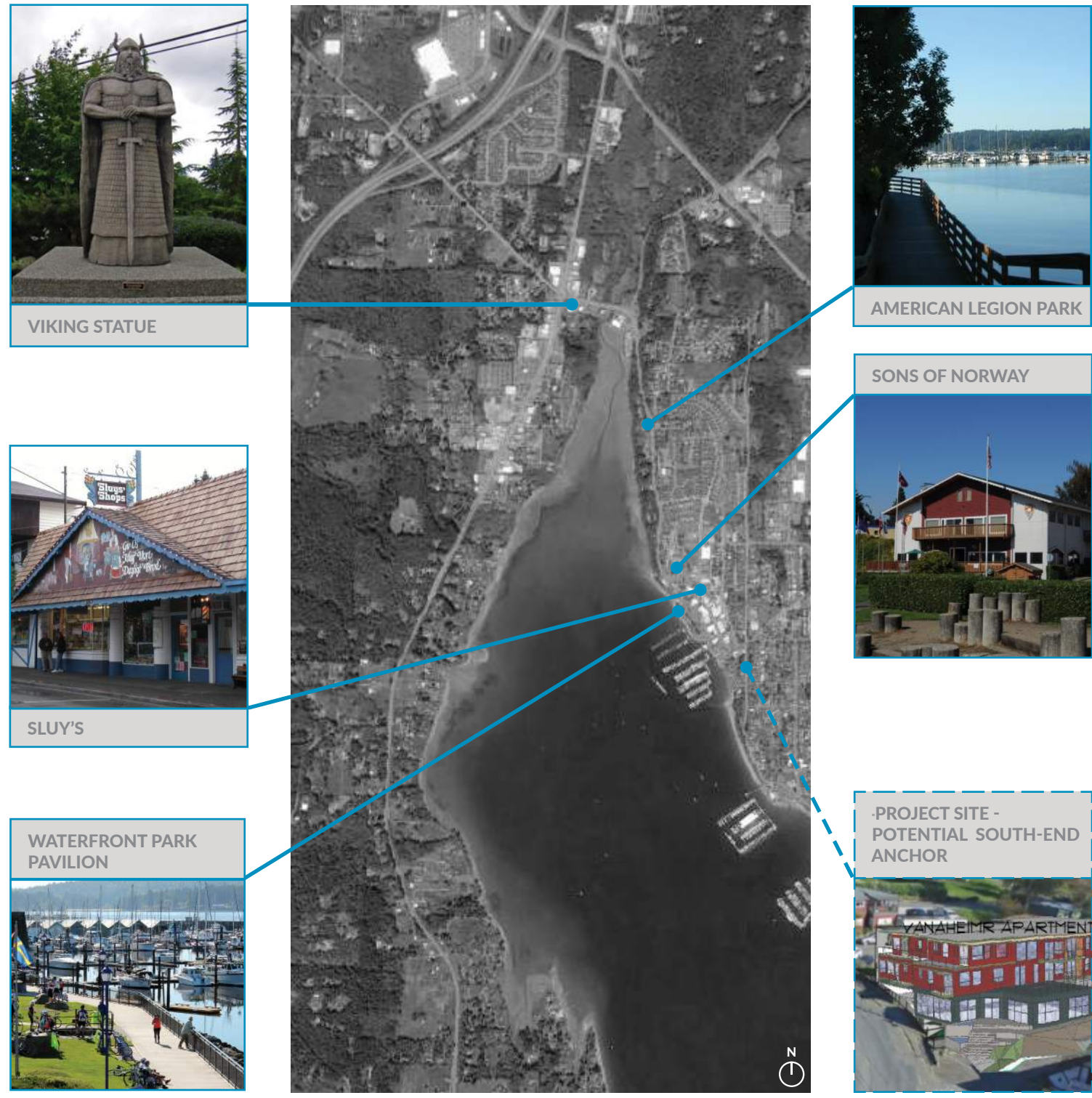


Figure 1-12 Boundaries diagram

**VIEWS:** significant views

The addition of *Sister City Monument* will have a positive view impact on the cityscape by enhancing the views for pedestrians and cars traveling on Front St NE. The monument also provides a landmark that is visible from the harbor and beyond.

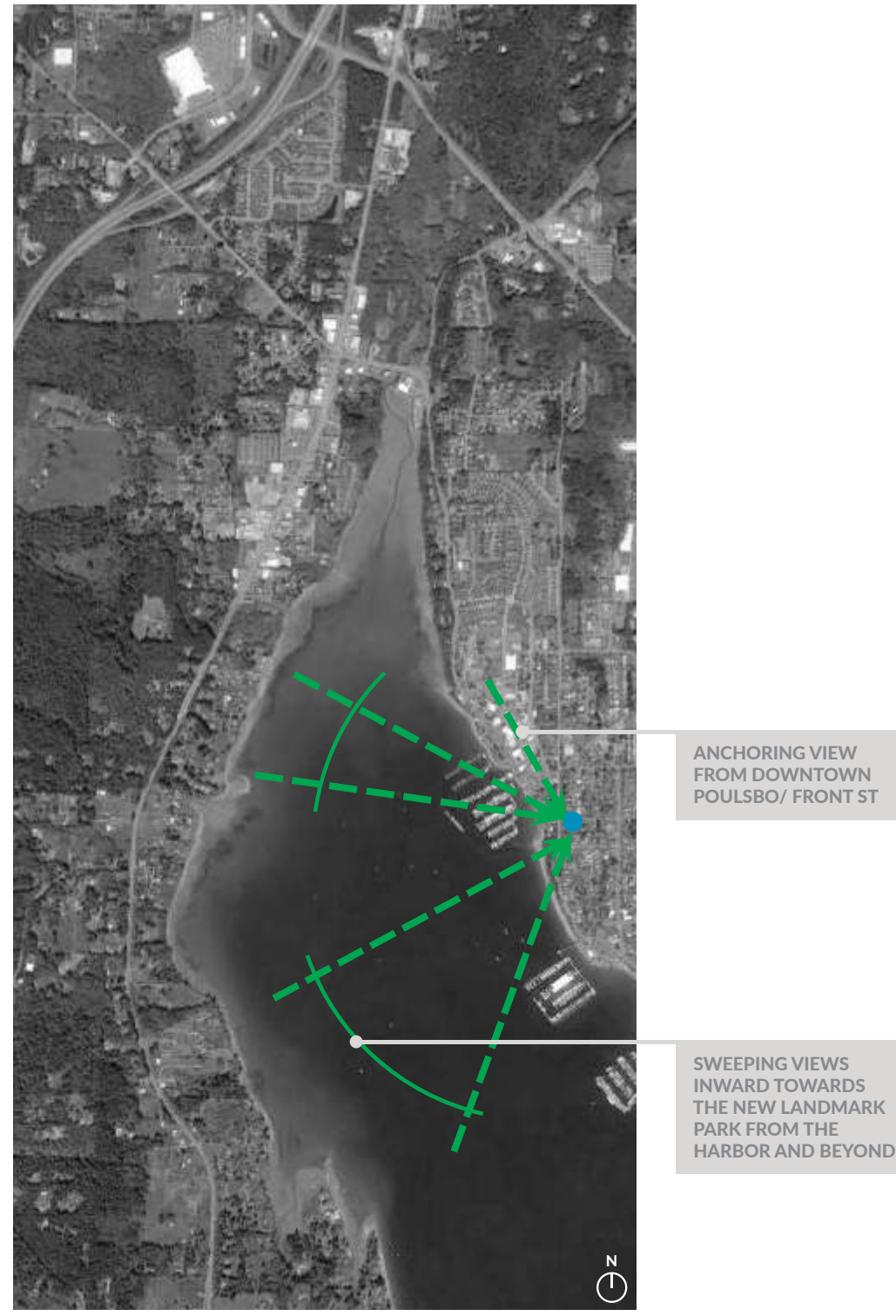


Figure 1-13 View diagram



**VANAHEIMR APARTMENTS  
VIEW IMPACT STUDY**

367 NE HOSTMARK ST  
POULSBO, WA 98370

NOVEMBER 30, 2018





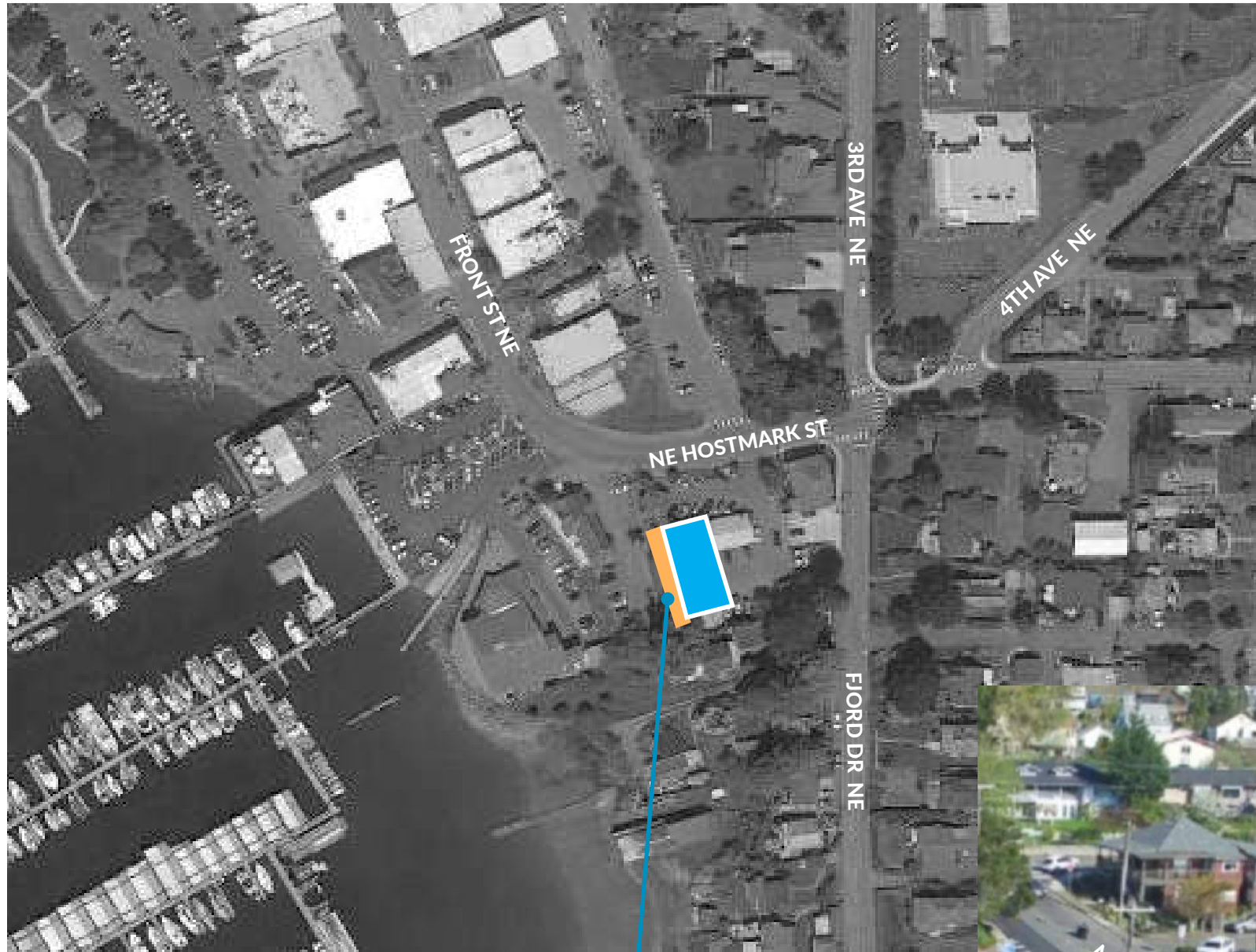


Figure 1-16 Opportunity area



Figure 1-18 Inspiration Image - Sculpture Man Meets the Sea in Denmark

OPPORTUNITY AREA  
FOR A SISTER CITY  
MONUMENT



Figure 1-17 View from north-east



VANAHEIMR APARTMENTS  
VIEW IMPACT STUDY

367 NE HOSTMARK ST  
POULSBO, WA 98370

NOVEMBER 30, 2018



## SITE VIEW IMPACT

The *Sister City Monument* provides an anchorage and an anchor and a landmark for downtown Poulsbo that celebrates Poulsbo's heritage and legacy as a maritime city. As a concept, we propose a monument inspired by the shape of Viking ships that nod to Poulsbo's Nordic wayfaring ancestors. This monument will provide a great educational opportunity; telling of Poulsbo's past and its influence on its present and future.

Current view



NE HOSTMARK ST

Currently, there are no markers announcing downtown Poulsbo from the east direction. This project creates definition; marking the end of Front Street. It also provides the city with a new public plaza with expansive views, water feature and landscape amenities.

Current view



Currently, the site offers no public amenities. View into the site is a dilapidated parking lot.

Proposed project view



VIKING SHIP INSPIRED SCULPTURES THAT CAN BE CRAFTED USING TRADITIONAL TECHNIQUES

SCULPTURES TO BE LIT AT NIGHT AND VISIBLE FROM SURROUNDING HARBOR

POTENTIAL PATHWAY AND STAIRWAY CONNECTION TO THE WATERFRONT

Project provides sculptural elements celebrating Poulsbo's heritage that will be visible from downtown, Liberty Bay and neighboring areas.



VANAHEIMR APARTMENTS  
VIEW IMPACT STUDY

367 NE HOSTMARK ST  
POULSBO, WA 98370

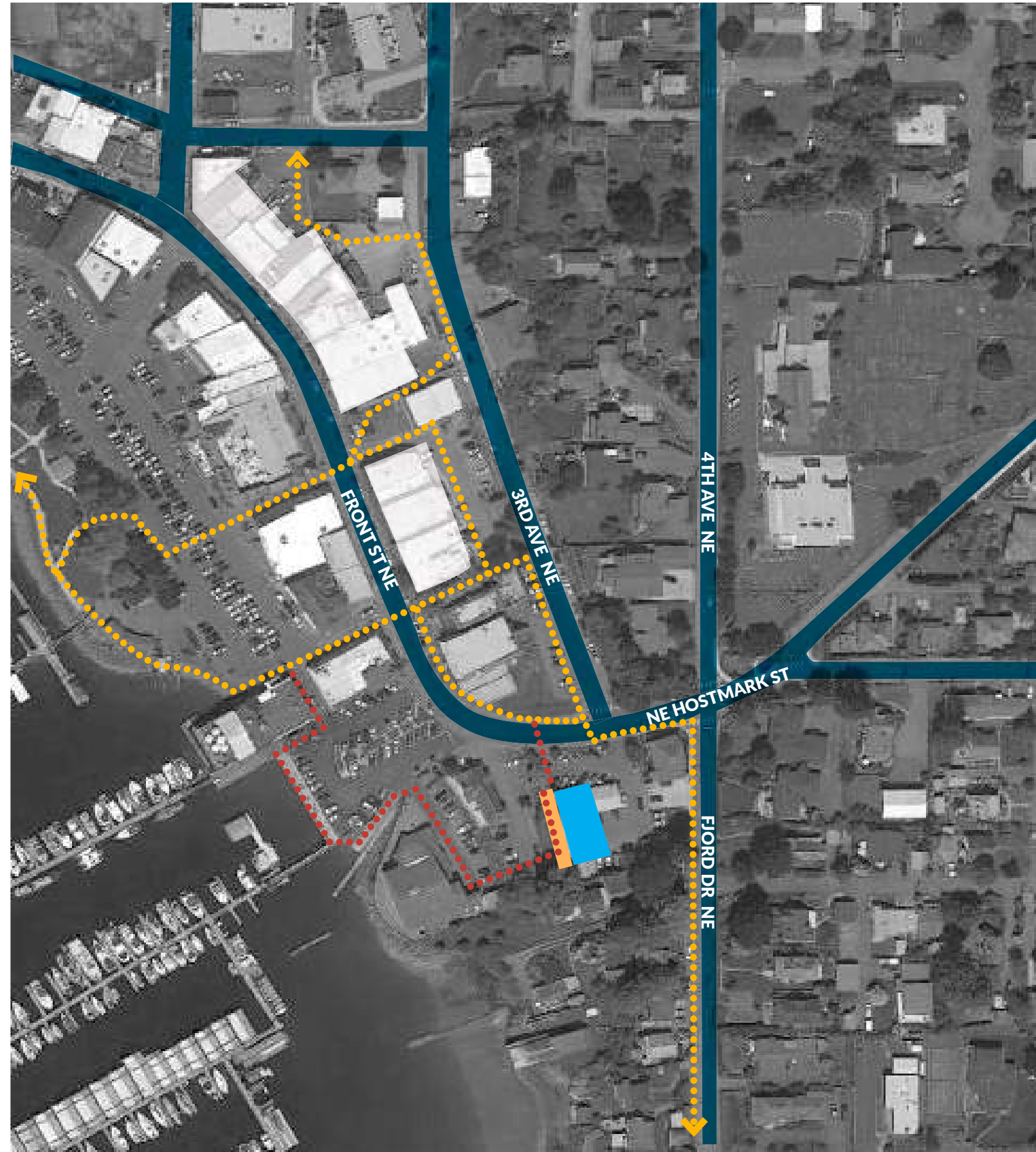
NOVEMBER 30, 2018



## PATHWAYS

Poulsbo offers variety of walking paths including informal, and lesser known post alley walkways. Some of these pathways are known to tourists and community members alike while others are hidden gems that only locals know about.

With the addition of the *Sister City Monument*, the community has an opportunity to extend the post alley concept that was first proposed in Sound West Group's 3rd Avenue housing statement. The monument will give a purpose and marker to the collection of these paths. This project also affords Poulsbo with an opportunity, given additional participation from neighboring businesses, to connect back to the existing pathway to the waterfront area; creating a continuous walking path.







### VANAHEIMR APARTMENTS VIEW IMPACT STUDY

367 NE HOSTMARK ST  
POULSBO, WA 98370

NOVEMBER 30, 2018

#### LEGEND:

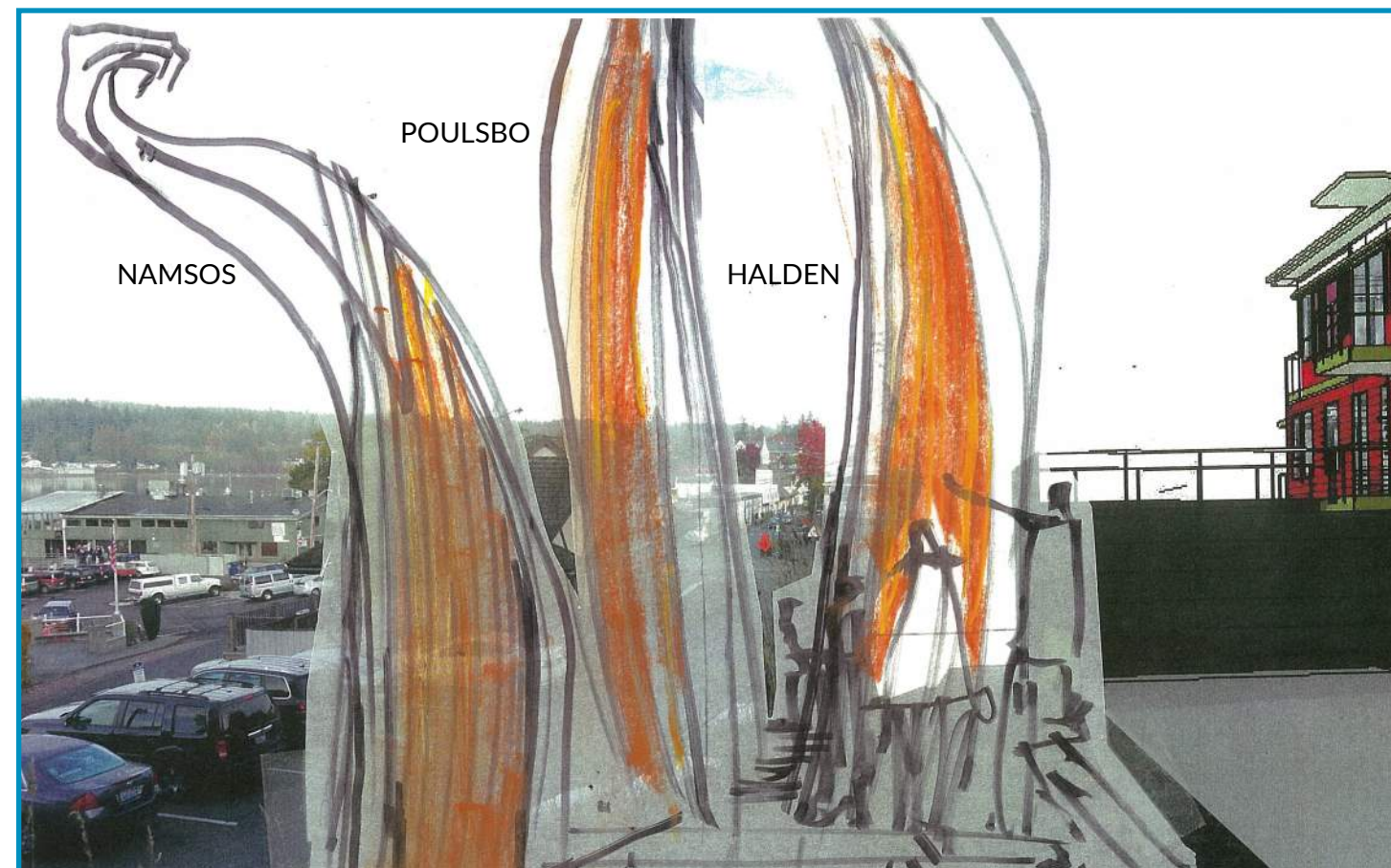
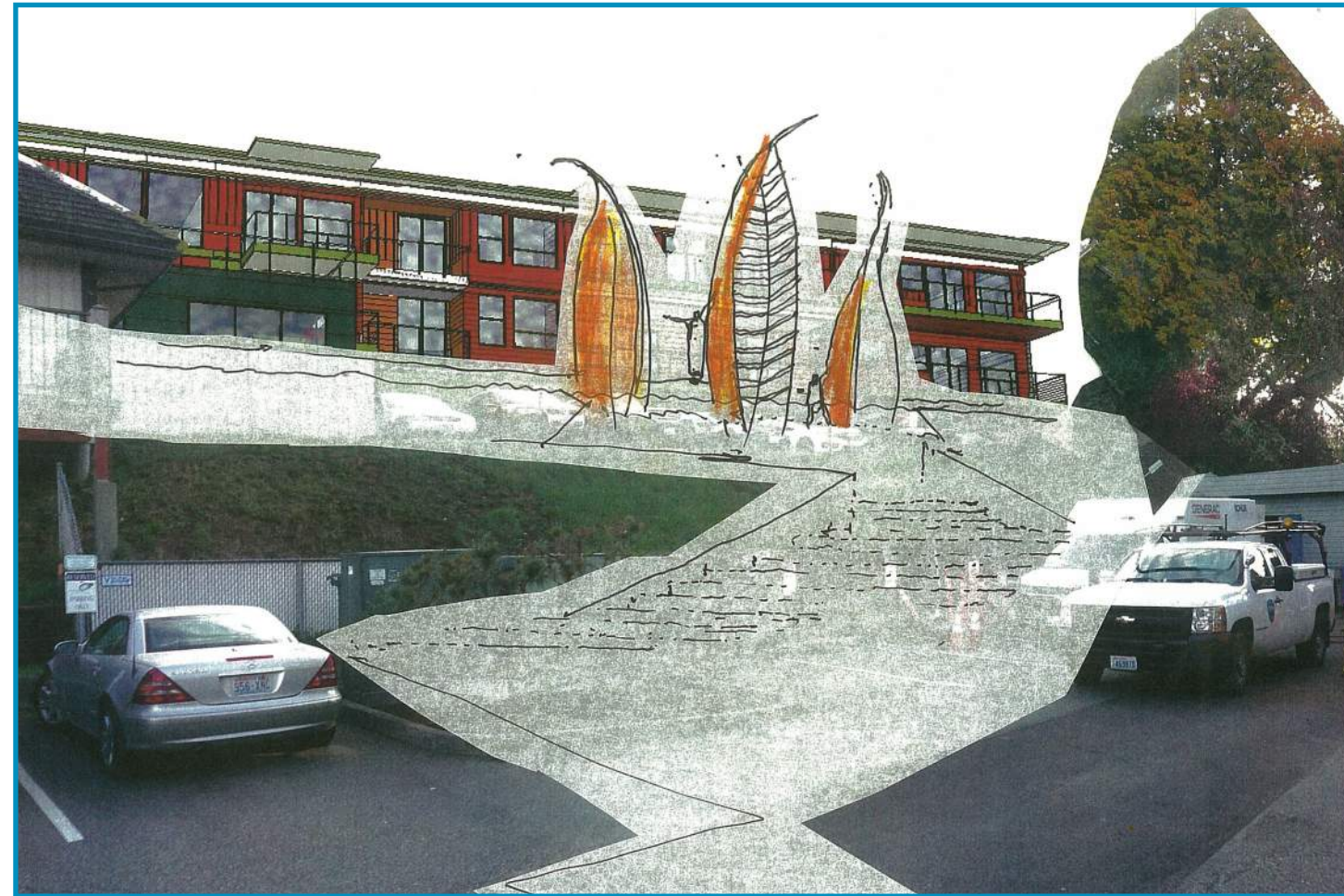
-  PROJECT SITE
-  TRAFFIC ROADS
-  PEDESTRIAN PATHS
-  PROPOSED PATH CONNECTION



## CONCLUSION

This project provides a great setting for a *Sister City Monument*. There are many positive impacts, should the city choose to build a monument to Poulsbo's sister city heritage:

- This marker will serve as a legacy for the community and a nod to the city's Nordic heritage.
- The monument will provide a critical missing piece an opportunity to anchor the south end of town in much the same way that north end is anchored. This will provide a welcome definition to the end of Front St. NE.
- This landmark will be visible to residents walking south on Front Street as well as boaters venturing into Liberty Bay and Poulsbo.
- The monument along with the pocket park will connect urban pathways in and around current businesses and the marina community. This will positively impact and enliven the current central waterfront and Poulsbo's business district.



VANAHEIMR APARTMENTS  
VIEW IMPACT STUDY

367 NE HOSTMARK ST  
POULSBO, WA 98370

NOVEMBER 30, 2018