



1

City of Poulsbo
200 NE Moe Street
Poulsbo, WA, 98370
(360) 394-9881
www.cityofpoulsbo.com

2

0000000804

DUE DATE	ACCOUNT NO.
09/20/14	01375-01
BILL DATE	AMOUNT DUE
08/31/14	135.72
SERVICE LOCATION	
200 NE MOE ST	

3

METER ID		READING DATES		METER READINGS		USAGE IN HCF	AMOUNT
		PREVIOUS	PRESENT	PREVIOUS	PRESENT		
63131152		07/17/14	08/16/14	474	483	9	
SERVICE							
Storm Drain Residential	10.72						
1-32 Gallon	17.73						
3/4" Residential Sewer	77.31						
3/4" Inside Res Water	29.96						

4

Current Charges
Previous Balance
Payments Received
Penalties and Adjustments
Past Due Charges

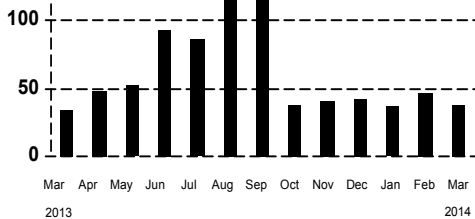
135.72
127.65
127.65
0.00
0.00

6

**PAST DUE ACCOUNT BALANCES ARE
SUBJECT TO A \$5.00 PENALTY PER DELINQUENT SERVICE!**

5

Consumption History in Hundred Cubic Feet



7

City of Poulsbo utility customers have asked for a more detailed billing statement to better track their utility usage with a return envelope.

Now it's here – a utility bill that provides personal usage graphs and details with easy to read information on the **front**, general utility information on the **back** and includes an *envelope for your convenience!*

110100

7

City of Poulsbo utility customers have asked for a more detailed billing statement to better track their utility usage with a return envelope.

Now it's here – a utility bill that provides personal usage graphs and details with easy to read information on the **front**, general utility information on the **back** and includes an *envelope for your convenience!*

1. Important Contact Information

We are pleased to introduce a new, redesigned utility bill!

The Finance Department phone number for the City of Poulsbo utilities is conveniently listed here for easy reference.

2. Account Summary Section

This is a snapshot of your utility account activity. You will see the Due Date, Account Number, Bill Date, Amount Due and Service Location here.

3. Current Bill Detail

Your most recent usage and bill breakdown is found in this section, which includes the Meter Information, Usage and the billing breakdown for your Service(s).

4. Account Activity

This is your current utility account activity. It includes the Current Charges, Previous Balance, Payments Received, Penalties and Adjustments and either Credit Amount Forwarded or Past Due Charges for the month.

5. Water Usage Graphs

Easy to read graphs illustrate your usage for a 12-month period. The first bar on the left shows your monthly usage a year ago, the last bar on the right shows your usage for the current month. Consumption is in hundred cubic feet.

6. Automatic Bank Draft

A message line will appear for Automatic Bank Draft Program participants who are currently enrolled.

7. Message Section

Look here for periodic news and updates for the City of Poulsbo!

8. Your Payment Stub

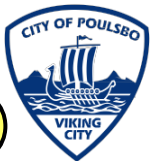
Your return payment stub ensures fast and efficient processing and fits nicely into the return envelope provided. The stub shows the Due Date, the Amount Due, the service location, your Account Number and a place for you to depict the Enclosed Amount. Also on the back is a "Contact Us" form that can be used to update information as well as notify us that you would like to be contacted in order to make changes on your account.

DATABAR FORM # 7260 - 4/14/14

PLEASE DETACH BOTTOM PORTION AND RETURN

This stub ensures that your payment is processed accurately.
Please detach and return the stub in the envelope provided when making payments.

8



City of Poulsbo
200 NE Moe Street
Poulsbo, WA 98370
(360) 394-9881

DUE DATE	AMOUNT DUE
09/20/14	135.72
SERVICE LOCATION	
200 NE MOE STREET	
ACCOUNT NUMBER	
01375-01	\$

Please Make Check Payable To Name Below:

CITY OF POULSBO
200 NE MOE STREET
POULSBO, WA 98370-7347

190000000804

Your Name Here
200 NE Moe St
Poulsbo, WA 98370