

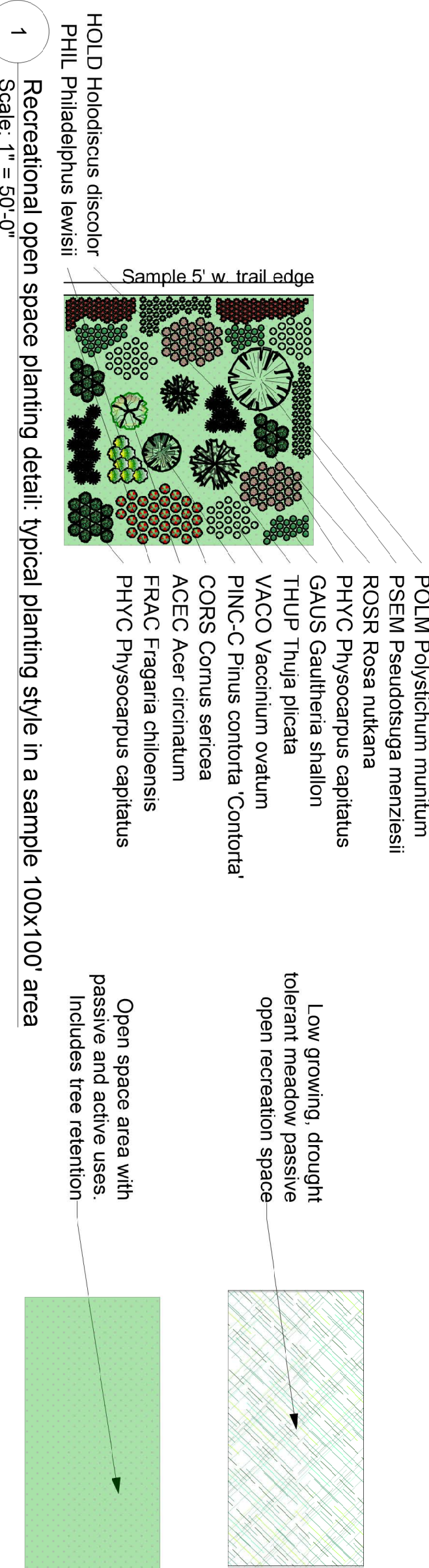
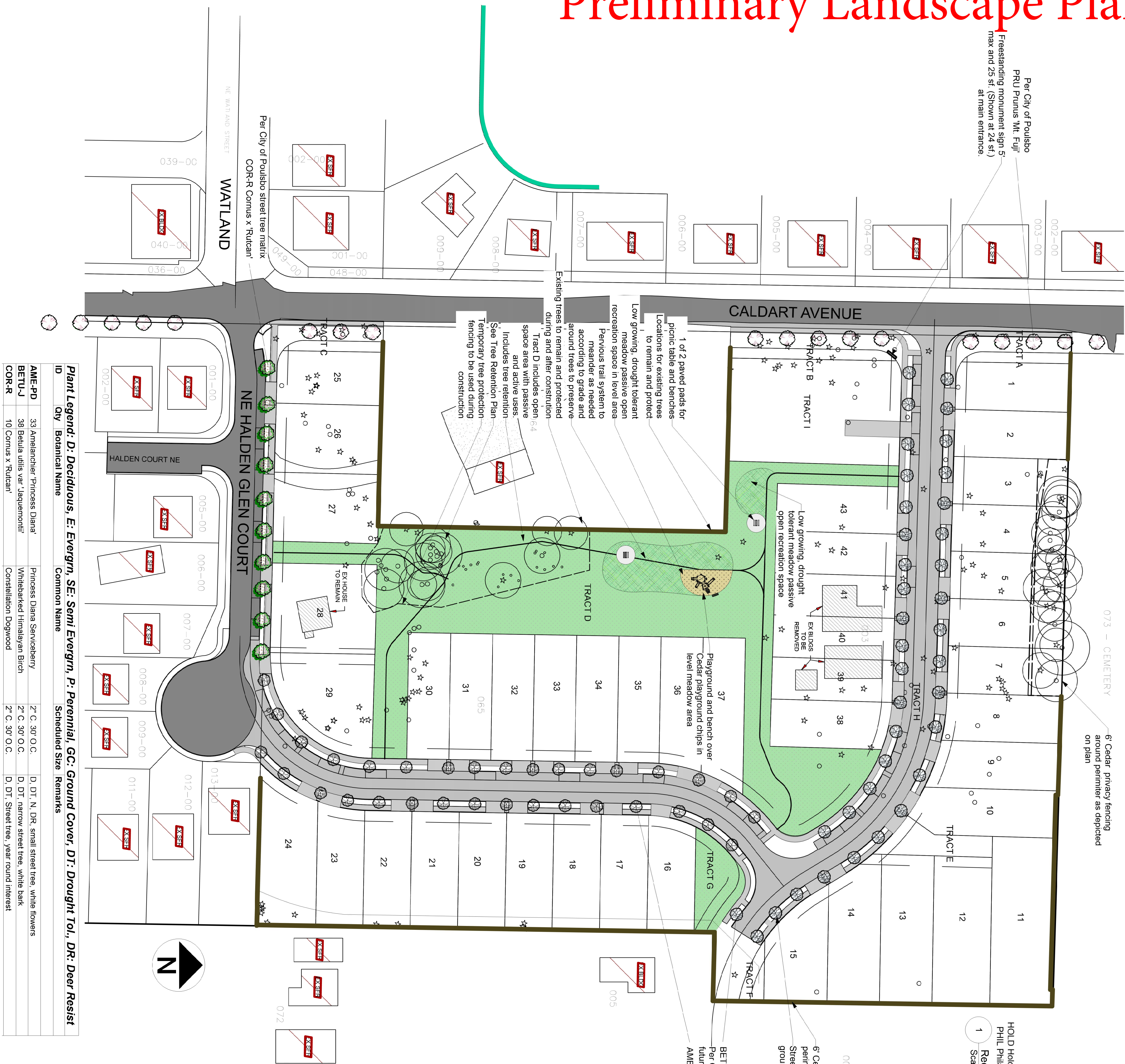
# EXHIBIT C

## PRELIMINARY LANDSCAPE PLAN

(Revised 3/2/20)



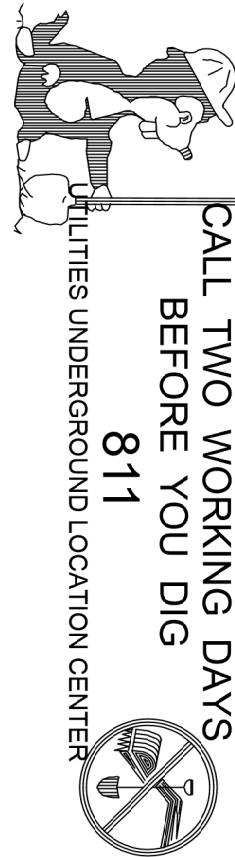
# Preliminary Landscape Plan



- Suggested native understory plants used to restore the passive area recreational open space under native tree canopy. Use random array of native plants below with proper spacing. See Detail 1 for sample planting layout:**
- Ground cover: 4" planted 18" O.C. or 1G, planted 3' O.C.  
Fragaria chiloensis – Beach Strawberry  
Arctostaphylos uva ursi – Kinnikinnick  
Arctostaphylos columbiana – Hairy Manzanilla  
Lunaea borealis – Twin Flower  
Oxalis oregano – Redwood Sorrel  
Trillium ovatum – Western Trillium
- Small shrubs: 1G, at least 12" H, planted 3' O.C.  
Cornus Kelsii, Kelsii Dogwood  
Monarda japonica – Persian Anemone  
Gaultheria shallon – Salal  
Lupinus polyphylus – Large-Leaved Lupine  
Polystichum munitum – Western Sword Fern
- Medium shrubs: 1G, at least 12" H, planted 4' O.C.  
Cornus Sericea, Red Osier Dogwood  
Rosa nutkana – Nootka Rose  
Rosa pisicarpa – Cluster Rose  
Spiraea douglasii – Hardhack  
Symphoricarpos albus – Common Snowberry  
Vaccinium ovalifolium – Evergreen Huckleberry
- BETUJ- Baulia utilis var. 'laqueumontii'  
Per City of Poulsbo street tree matrix in case of  
future connection to Lincoln Road
- WME-PD Arnelanchier, Princess Diana Per City of Poulsbo street tree matrix  
ground cover
- 6 Cedar privacy fencing around  
perimeter as depicted on plan  
Street trees 30' O.C. with  
ground cover
- 001

## General Notes

1. Plant in fall or spring for best results. Plant list is based on inventory commonly available in the Pacific Northwest. Not all plants are available year round. Availability changes both seasonally and annually according to what growers can provide. If an alternative plant is needed due to lack of availability, please see the landscape architect for a substitution.
  2. Dig and store native plants available on-site prior to excavation. Dig a rootball twice the size of the plant. For larger conifers use a backhoe with tree spade attachment. Store the plants in containers in their native soil. Water regularly prior to planting. Street trees planted 25' O.C., whenever possible. Where space does not allow, plant evenly up 35' O.C. As per plan.
  3. Dimensions: Dimensions and layout of existing and proposed site layout are based on provided Civil site plan. The landscape plan was added to the site plan.
  3. Planting beds: 50% 3-way mix, 50% native soil. 1" top dress all beds with organic Amert soil annually, with 2-3" Organic compost to be used as much in lieu of bark. Mulch is mandatory with little to no irrigation to retain moisture around plants and amend poor soil.
  4. If possible store and cover any nutrient rich native soil scraped from the site and re-use in planting beds and meadow areas. See soil storage guidelines.
  4. Remove all weeds from all beds annually with 3" organic compost.
  4. Irrigation: Xeriscaping methods have been used in planting beds, which do not require permanent irrigation. Use temporary irrigation during warm months until established. Plants are drought tolerant once established and watering can be reduced after 3 years. Microclimates, weather variability, sunlight, and site conditions will vary greatly and influence watering needs for each area over time. In general water: plants 2x per week for the first 3 months or the first summer if the first 3 months are wet weather, then approximately 3x/month during the warm months for the next 2 years. Water as needed after that time. Leaf structure, fullness, color, and changes to plant habit will determine whether water should be reduced or increased over time. Never water between 10 a.m. and 6 p.m. to reduce water lost to evaporation. If you have an automatic irrigation system, adjust your controller regularly to accommodate weather conditions. Also, install a rain sensor to shut off the device when it rains. There are no assigned watering days, but never water a zone more than three days a week. Plan to "water, rest, water" by watering zones in increments, with rest periods to give water time to travel toward the roots. Light sprinkling only settles the dust and does little to alleviate drought stress of plants growing in hot, dry soil. Instead of light daily waterings, give plants a weekly soaking. When watering, allow the soil to become wet to a depth of 5 to 6 inches. This type of watering allows moisture to penetrate into the soil area where roots can readily absorb it. A soil watered deeply retains moisture for several days, while one wet only on the inch or so is dry within a day.
  6. Consult with the irrigation technician or horticulturalist annually to determine adjustments to water quantity and frequency.
  6. Lighting: In general, keep lighting low and to a minimum to reduce light pollution. Requests to substitute any product, technique, or material shall be submitted in writing to Architect for approval. Samples, product information, and drawings shall be required prior to substitution approval. Proposed substitution shall be of equal quality and performance specification to that originally specified.
  8. Contractor is responsible for the safety, actions and conduct of her or his employees and his subcontractors' employees while in the project area, adjacent areas and in the building and its vicinity.
  9. Contractor shall review these plans thoroughly, make a detailed site visit, and shall immediately bring any inconsistency, site layout problem, or any other request for clarification to the Landscape Architect for resolution prior to the delivery of any bid. Contractor is responsible for ensuring that all stewart, and structures meet both International and County building codes
  11. Call before you Dig: 1-800-424-5555 to avoid disrupting utilities



CALL TWO WORKING  
BEFORE YOU DIG  
811

<p>Emily Russell, P.L.A., ASLA  380-980-1720  <a href="http://www.russellandscape.com">www.russellandscape.com</a>  <a href="mailto:emily@russellandscape.com">emily@russellandscape.com</a>  245 4th Street #801  Bremenon WA 98337</p>		<p>Contractor</p>
<p>Calvin Hill  Calvin Hill  Calaverita  Calaverita Park  Fountain, WA</p>		<p>Client/End User</p>
<p>Schematic/Conceptual Landscape Plan</p>		<p>Design/Development</p>
<p>Project Name</p>	<p>Project Location</p>	<p>Project Description</p>
<p>Emily Russell</p>	<p>Landscape layout</p>	<p>1'-60"</p>
<p>10/22/18</p>	<p>L-1</p>	<p>1</p>
<p>Rev: 2/20</p>	<p>1</p>	<p>1</p>
<p>Calaverita</p>	<p>1</p>	<p>1</p>