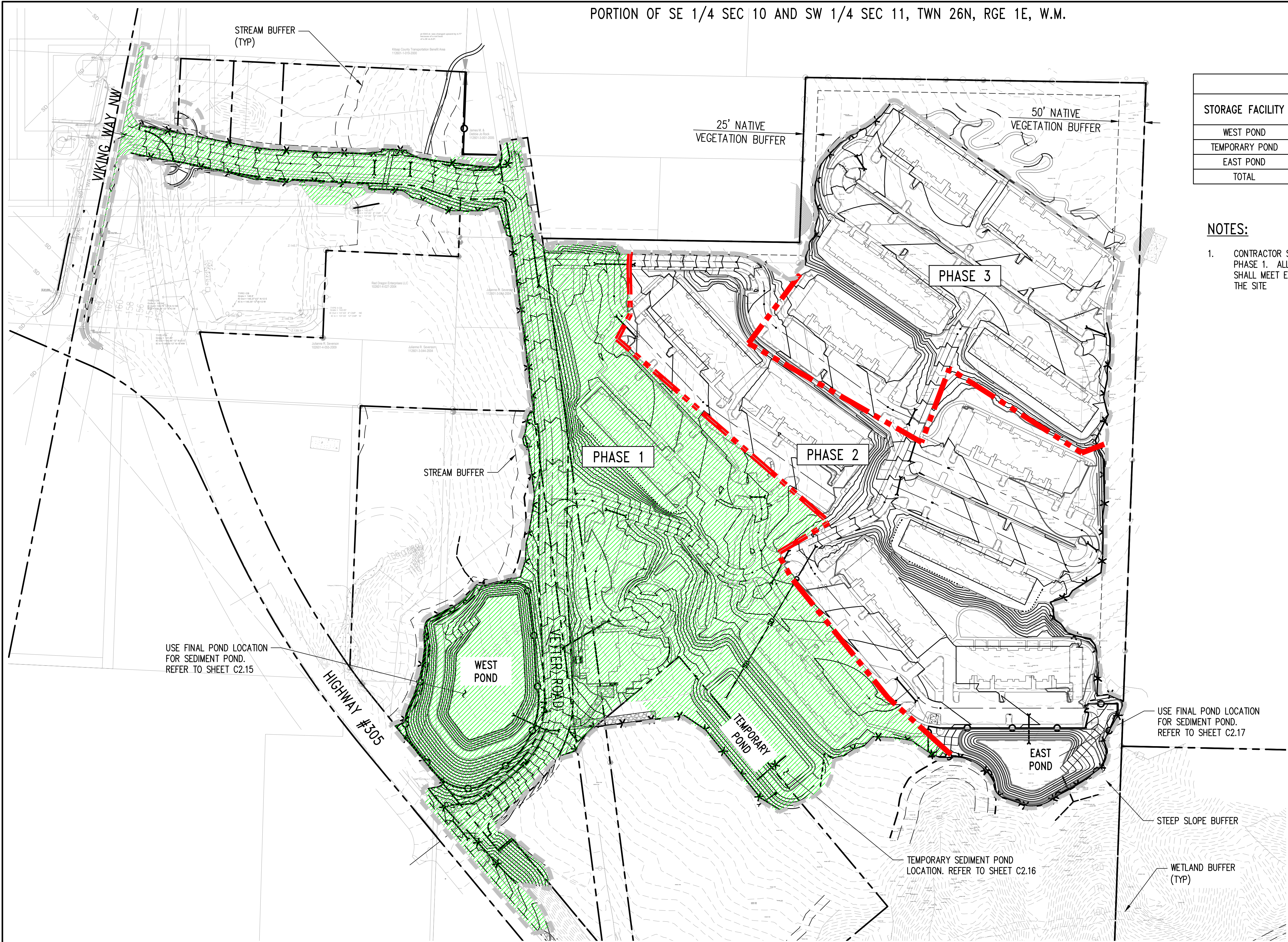


2:\2000001-2009999\2000329 Oslo Bay\CAD\Design\ENGINEERING\2.00 TESC 04.dwg
JmefP
Sep 13, 2021 - 2:25pm

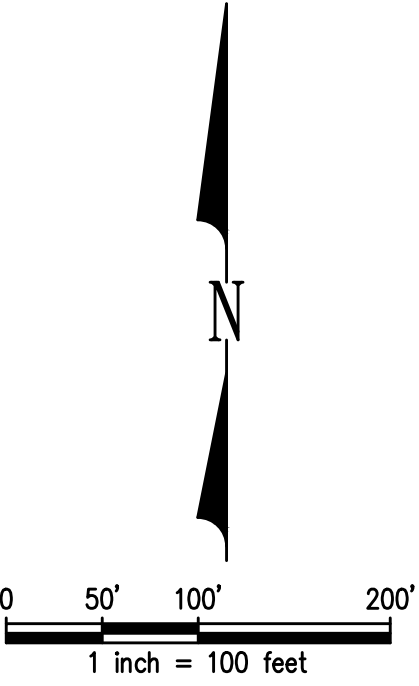


PORTION OF SE 1/4 SEC 10 AND SW 1/4 SEC 11, TWN 26N, RGE 1E, W.M.

PHASE 1			
STORAGE FACILITY	AREA ROUTED TO POND DURING THIS PHASE (AC)	REQUIRED STORAGE (SF)	PROVIDED STORAGE (SF)
WEST POND	14.62	45,468	448,821
TEMPORARY POND	—	—	—
EAST POND	—	—	—
TOTAL	14.62	45,468	448,821

- NOTES:
1. CONTRACTOR SHALL PRIORITIZE THE WEST POND CONSTRUCTION AT THE COMMENCEMENT OF WORK IN PHASE 1. ALL STORMWATER RUNOFF WITHIN PHASE 1 SHALL BE CONVEYED TO THE WEST POND AND SHALL MEET ECOLOGY AND CITY OF POULSBORO WATER QUALITY STANDARDS PRIOR TO DISCHARGE FROM THE SITE

LEGEND	
	PROPERTY LINE/ROW
	LIMITS OF DISTURBANCE
	PHASE LINE
	CONSTRUCTION ENTRANCE
	SILT FENCE
	CATCH BASIN INLET PROTECTION
	TEMPORARY CULVERT
	4" PERFORATED PIPE
	ROCK ARMORING OUTFALL PROTECTION
	PUMP
	FORCE MAIN
	EXISTING ELEVATION CONTOUR
	PROPOSED ELEVATION CONTOUR
	CRITICAL AREA BUFFER/SETBACK
	CONSTRUCTION RUN-OFF LIMIT
	DRAINS TO WEST POND
	DRAINS TO EAST POND
	DRAINS TO TEMPORARY POND



NO.	DATE	BY	CHD.	APPR.	REVISION

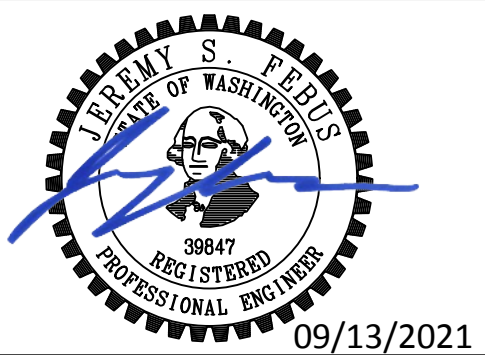
DRAWN BY KSA/TAD	DESIGNED BY JRN
CHECKED BY JRN	APPROVED BY JSF
DATE	DATE
J 0 B No. :2000329	

CALL TWO BUSINESS
DAYS BEFORE YOU DIG
1-800-424-5555

SCALE:
AS NOTED

kpff

1601 5th Avenue, Suite 1600
Seattle, WA 98101
206.622.5822
www.kpff.com



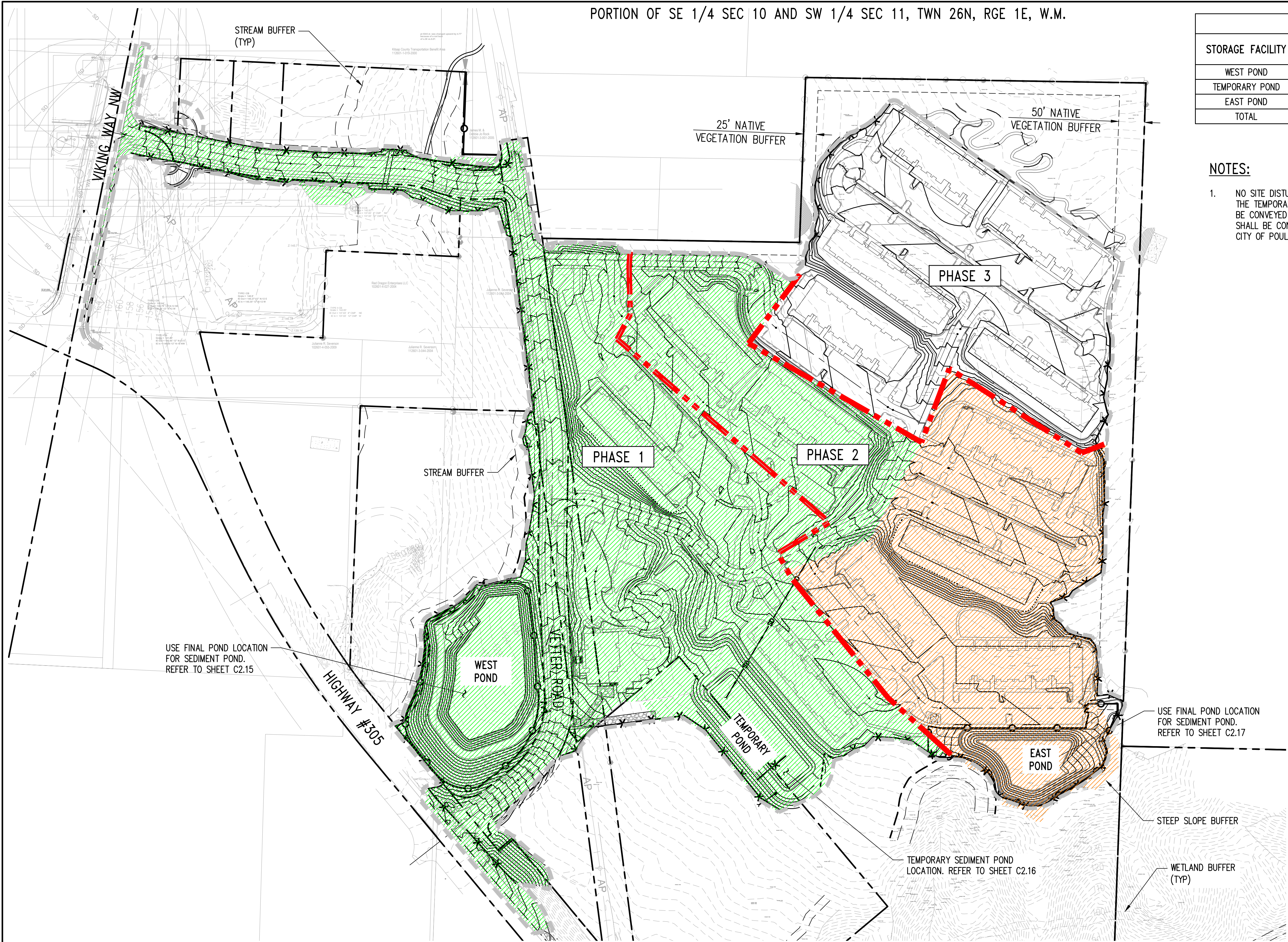
OSLO BAY APARTMENTS
POULSBORO, WASHINGTON

PHASE 1 CONSTRUCTION STORMWATER BASIN PLAN

SHEET

C2.00

Z:\2000001-2009999\2000329 Oslo Bay\CAD\Design\ENGINEERING\22.00 TESC 04.dwg
JmefP
Sep 13, 2021 - 2:25pm



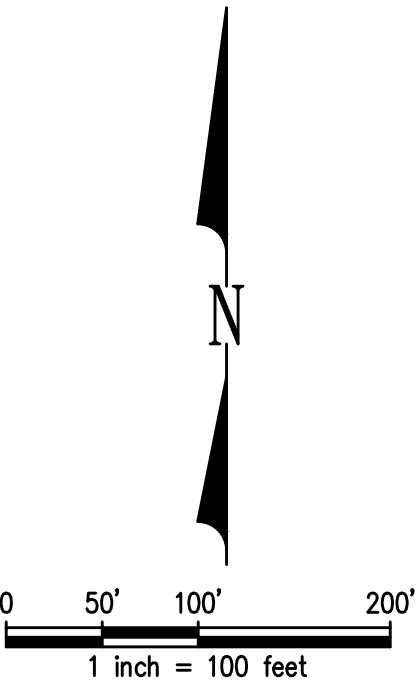
PHASE 2			
STORAGE FACILITY	AREA ROUTED TO POND DURING THIS PHASE (AC)	REQUIRED STORAGE (SF)	PROVIDED STORAGE (SF)
WEST POND	22.00	68,418	448,821
TEMPORARY POND	3.28	10,202	59,562
EAST POND	-	-	-
TOTAL	25.28	78,620	508,383

NOTES:

1. NO SITE DISTURBANCE SHALL OCCUR IN PHASE 2 UNTIL THE ESTABLISHMENT AND COMMISSIONING OF THE TEMPORARY SEDIMENT POND WITHIN PHASE 1. SUBSTANTIALLY THE SITE AREA SHOWN HERE SHALL BE CONVEYED TO THE TEMPORARY POND, AND THE REMAINDER OF PHASE 1 AND ALL OF PHASE 2 SHALL BE CONVEYED TO THE WEST POND. ALL STORMWATER DISCHARGE SHALL MEET ECOLOGY AND CITY OF POULSBORO WATER QUALITY STANDARDS PRIOR TO DISCHARGE FROM THE SITE.

LEGEND

- PROPERTY LINE/ROW
- LIMITS OF DISTURBANCE
- PHASE LINE
- CONSTRUCTION ENTRANCE
- SILT FENCE
- CATCH BASIN INLET PROTECTION
- TEMPORARY CULVERT
- 4" PERFORATED PIPE
- ROCK ARMORING OUTFALL PROTECTION
- PUMP
- FORCE MAIN
- EXISTING ELEVATION CONTOUR
- PROPOSED ELEVATION CONTOUR
- CRITICAL AREA BUFFER/SETBACK
- CONSTRUCTION RUN-OFF LIMIT
- DRAINS TO WEST POND
- DRAINS TO EAST POND
- DRAINS TO TEMPORARY POND



NO.	DATE	BY	CHD.	APPR.	REVISION

DRAWN BY KSA/TAD	DESIGNED BY JRN
CHECKED BY JRN	APPROVED BY JSF
DATE	DATE
J 0 B No. :2000329	

CALL TWO BUSINESS
DAYS BEFORE YOU DIG
1-800-424-5555

SCALE:
AS NOTED

kpff

1601 5th Avenue, Suite 1600
Seattle, WA 98101
206.622.5822
www.kpff.com

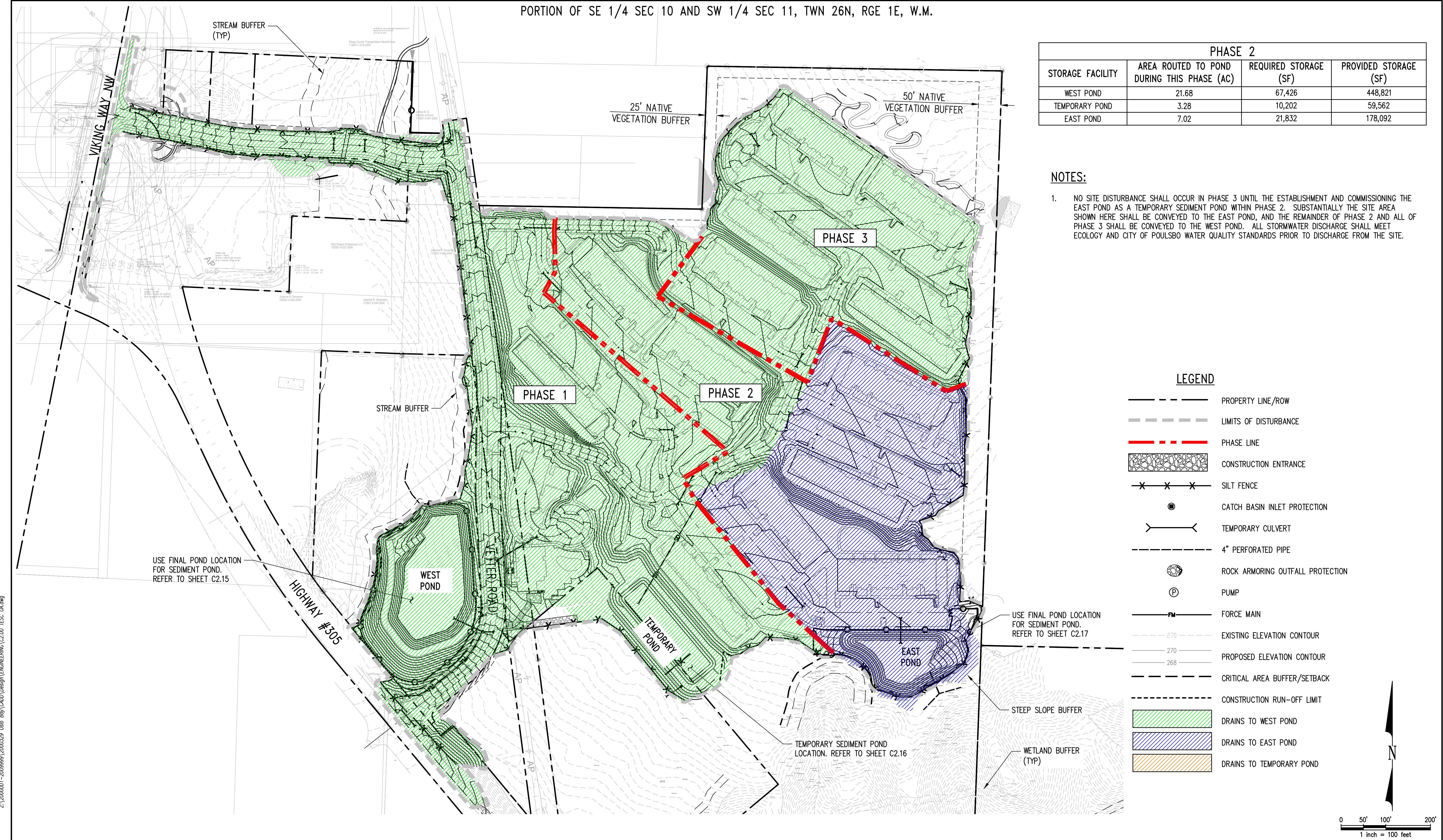
LEARN & FIELD
STATE OF WASHINGTON
39847
REGISTERED
PROFESSIONAL ENGINEER
09/13/2021

OSLO BAY APARTMENTS
POULSBORO, WASHINGTON

PHASE 2 CONSTRUCTION STORMWATER BASIN PLAN

SHEET

C2.01



						DRAWN BY KSA/TAD	DESIGNED BY JRN	CALL TWO BUSINESS DAYS BEFORE YOU DIG 1-800-424-5555		1601 5th Avenue, Suite 1600 Seattle, WA 98101 206.622.5822 www.kpff.com		OSLO BAY APARTMENTS POULSBORO, WASHINGTON			SHEET
					CHECKED BY JRN	APPROVED BY JSF	PHASE 3 CONSTRUCTION STORMWATER BASIN PLAN					C2.02			
					DATE DATE										
NO.	DATE	BY	CHD.	APPR.	J O B No. :2000329		S C A L E : AS NOTED						09/13/2021		

Sep 13, 2021 - 2:25pm JmrP Z:\2000001-2009999\2000329 Oslo Bay CAD\Design\ENGINEERING\22.00 TESC 04.dwg