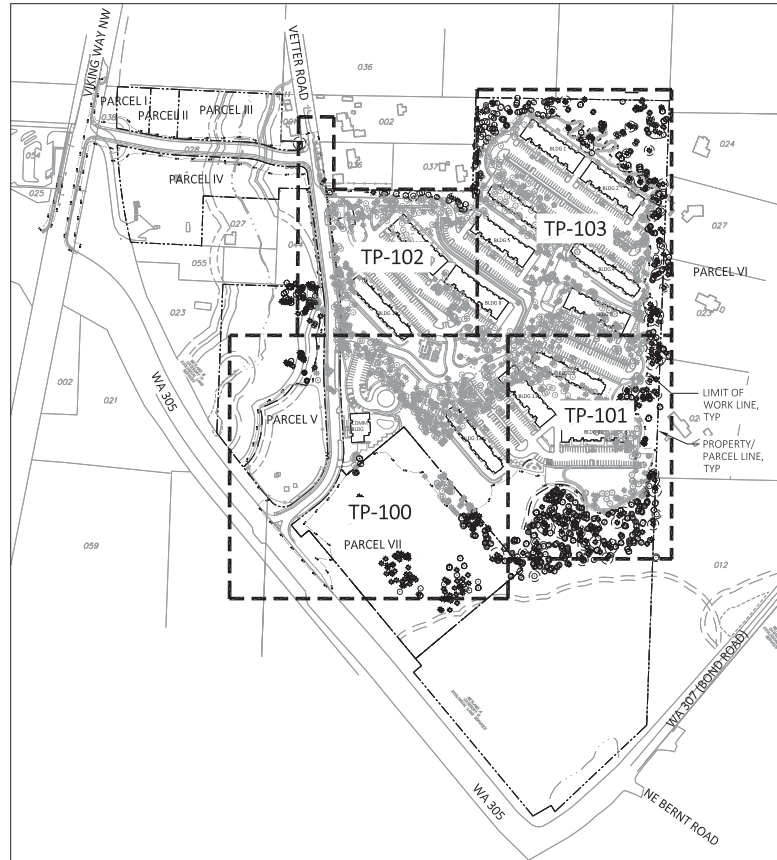


## KEY PLAN



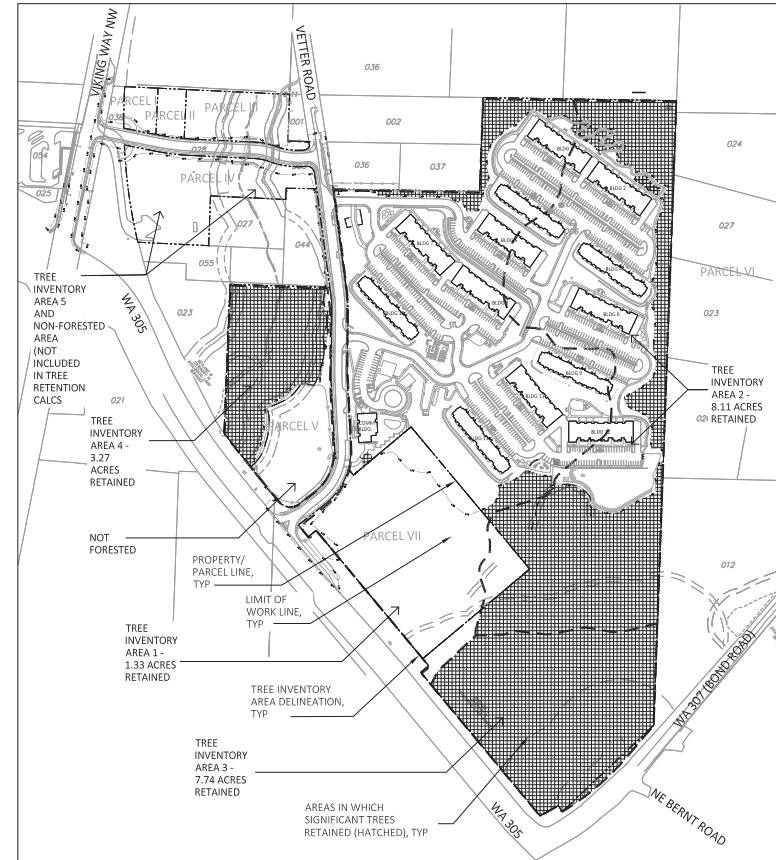
## TREE RETENTION NOTES

- SEE SIGNIFICANT TREE INVENTORIES BY OTHERS:
  - TEAM 4 INVENTORY (MANUAL LOCATION OF SIGNIFICANT TREES - PARTIAL INVENTORY)
  - AMERICAN FOREST MANAGEMENT (SAMPLE INVENTORY METHOD WITHIN 5 SITE AREAS FOR IDENTIFYING SIGNIFICANT TREES)
- TREES SHOWN IN KEY PLAN ABOVE PROVIDED THROUGH TEAM 4 INVENTORY.
- AREAS SHOWN IN SIGNIFICANT TREE RETENTION PLAN, UPPER RIGHT, PROVIDED THROUGH AMERICAN FOREST MANAGEMENT INVENTORY.
- CITY OF POULSBORO MUNICIPAL CODE CHAPTER 18.180.030 TREE RETENTION REQUIREMENT: AT LEAST TWENTY-FIVE PERCENT OF THE EXISTING TREES WHICH ARE TEN INCHES IN DIAMETER OR GREATER MEASURED FOUR FEET SIX INCHES ABOVE GRADE FOR PARCELS ZONED RESIDENTIAL MEDIUM (PARCELS V AND VI) SHALL BE RETAINED. SEE TREE RETENTION PLAN, THIS SHEET, FOR AREAS WHERE SIGNIFICANT TREES ARE RETAINED (SHADED). SEE ALSO THE SIGNIFICANT TREE RETENTION TABLE, THIS SHEET, FOR CALCULATIONS OF SIGNIFICANT TREES RETAINED IN PARCELS V AND VI. APPROXIMATELY 40.64% OF SIGNIFICANT TREES IN PARCELS V AND VI WILL BE RETAINED.
- SEE SHEETS TP-100 THROUGH TP-103 FOR TREE PROTECTION PLANS FOR PARCELS V AND VI.
- SEE SHEET TP-104 FOR TREE PROTECTION DETAILS.

## TREE RETENTION SHEETS

TP-001 TREE RETENTION COVER  
 TP-100 TREE RETENTION PLAN  
 TP-101 TREE RETENTION PLAN  
 TP-102 TREE RETENTION PLAN  
 TP-103 TREE RETENTION PLAN  
 TP-104 TREE RETENTION DETAILS

## SIGNIFICANT TREE RETENTION (PARCELS V AND VI)



## SIGNIFICANT TREE RETENTION CALCULATIONS

Tree Inventory Area	Notes	Acres	Significant Trees/Acre	Total Significant Trees	Acres Retained	Total Significant Trees Retained	% Retained
1	Includes portions of parcels VI and VII (portion of area 5 located in parcel VII is not included in tree retention calculations)	18.70	123	2300	1.34	164	7.15%
2	Includes portions of parcels VI and VII (portion of area 3 located in parcel VII is not included in tree retention calculations)	17.02	119	2026	8.11	965	47.65%
3	Includes portions of parcel VI	7.74	128	991	7.74	991	100.00%
4	Includes portion of parcel V; does not include currently non-forested area of parcel V located off-site and not included in tree retention calculations; does not include currently non-forested area adjacent to area 5)	4.93	103	508	3.29	339	66.79%
5							
		48		5804	20	2459	42.39%

Parcels V and VI

**OSBORN  
CONSULTING  
ARCHITECTS**

1800 112th Ave. NE, Suite 220E  
 Bellevue, WA 98004  
 Ph: (425) 451-4009  
 1402 3rd Ave. Suite 415, Seattle,  
 WA 98101 Ph: (206) 826-9133



EDWARD ROSE & SONS  
 MARK PERSCHINSKI  
 PO BOX 2011  
 BLOOMFIELD HILLS, MI 48303  
 (248) 896-4500

# OSLO BAY APARTMENTS

POULSBORO, WASHINGTON

09/03/2021 LAND USE REVISION 4  
 03/01/2021 LAND USE REVISION 3  
 1/04/2020 LAND USE REVISION 2  
 4/05/2020 LAND USE REVISION 1

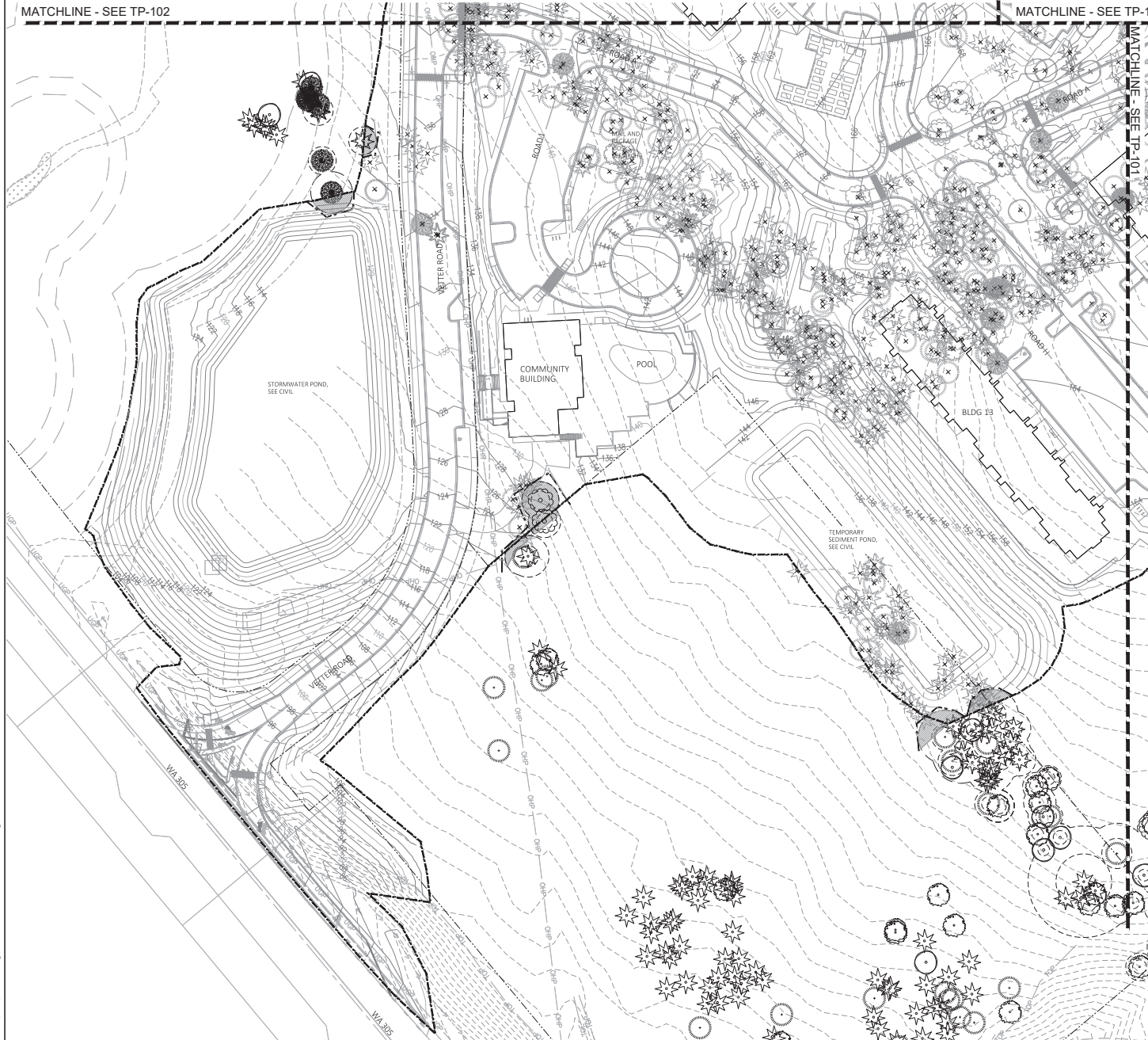
Revised  
 LAND USE  
 SITE PLAN REVIEW  
 01 NOVEMBER 2019

TREE RETENTION COVER

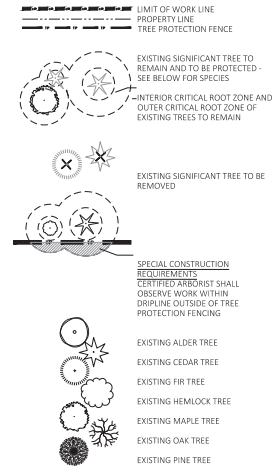
TP-001

MATCHLINE - SEE TP-102

MATCHLINE - SEE TP-103

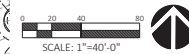


### TREE RETENTION LEGEND



### TREE RETENTION NOTES

1. SEE NOTES ON SHEET TP-001.
2. SEE SIGNIFICANT TREE INVENTORIES AS PROVIDED BY OTHERS FOR EXISTING SPECIES, SIZES AND MAPPING.
3. EXISTING SIGNIFICANT TREES TO REMAIN AND TO BE REMOVED AS SHOWN ON THIS PLAN ARE TAKEN FROM PROVIDED INVENTORIES AND DO NOT REPRESENT ALL EXISTING TREES.
4. EXISTING TREES ADJACENT TO BUT OUTSIDE OF THE LIMIT OF WORK, AND EXISTING TREES TO REMAIN WITHIN THE LIMIT OF WORK, SHALL BE PROTECTED IN PLACE FOR THE DURATION OF CONSTRUCTION, INCLUDING DEMOLITION, ACCORDING TO THE CITY OF POUFSBO STANDARDS. SEE SHEET TP-105 FOR TREE PROTECTION DETAILS.
5. TREE PROTECTION FENCING SHALL NOT BE REMOVED WITHOUT PRIOR WRITTEN APPROVAL OF THE CITY OF POUFSBO.
6. ONCE ADJACENT CLEARING HAS TAKEN PLACE, RETAINED TREES AT FOREST EDGE SHALL BE ASSESSED BY AN ISA CERTIFIED AND TREE RISK ASSESSMENT QUALIFIED ARBORIST TO DETERMINE IF THEY ARE WINDFIRM.
7. REFER TO TESC/CONSTRUCTION SEQUENCING PLAN.



TREE PROTECTION FENCING SHALL BE IN PLACE AND VISIBLE PRIOR TO THE START OF CONSTRUCTION ACTIVITY, INCLUDING MATERIAL DELIVERIES. DO NOT RELOCATE FENCING AT ANYTIME WITHOUT WRITTEN APPROVAL FROM THE OWNER.



1800 112th Ave NE, Suite 2200  
Bellevue, WA 98004  
PH (425) 461-4009  
1402 3rd Ave, Suite 415, Seattle,  
WA 98101 PH (206) 628-9133



Chief  
EDWARD ROSE & SONS  
MARK PERKOWSKI  
P.O. BOX 2011  
BLOOMFIELD HILLS, MI 48303  
(248) 896-5503

# OSLO BAY APARTMENTS

POULSBO, WASHINGTON

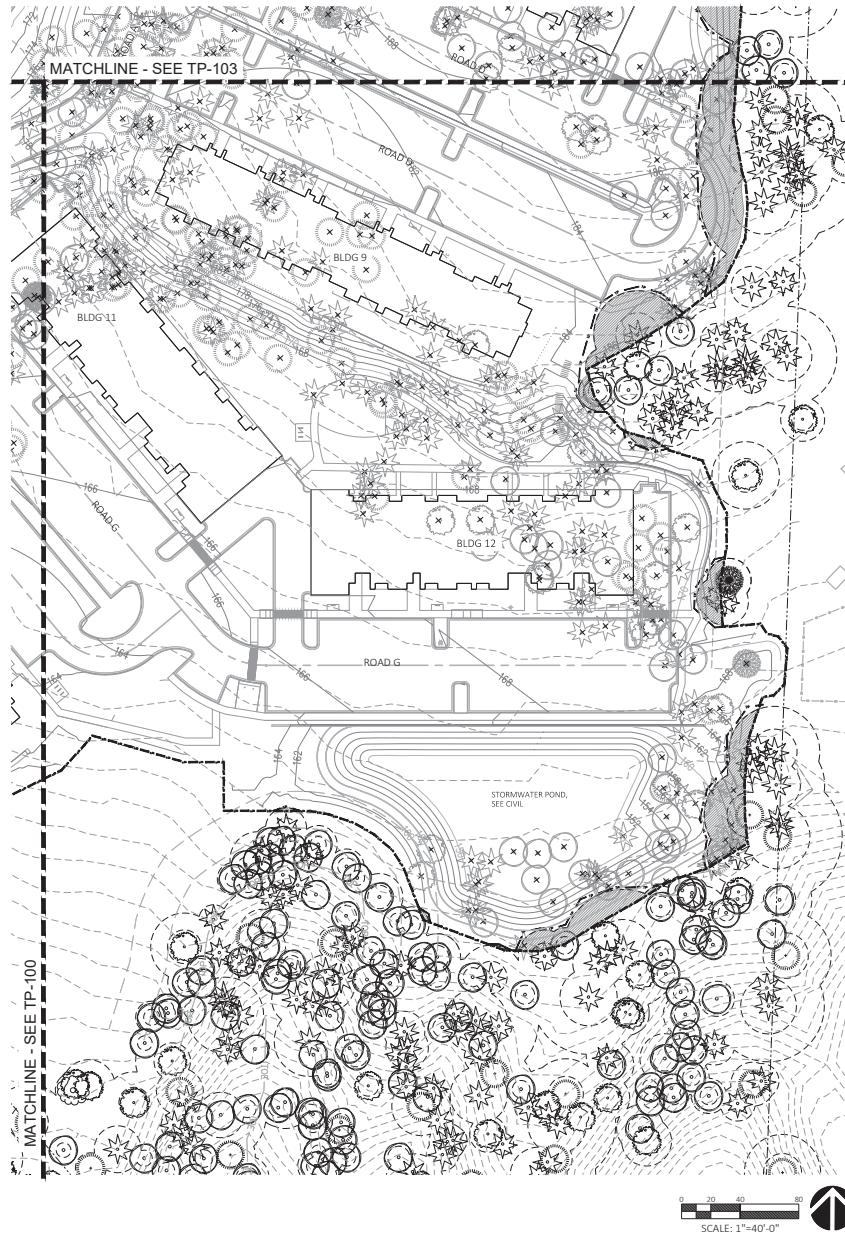
09/03/2021 LAND USE PREVISION 4  
09/01/2021 LAND USE REVISION 3  
11/04/2020 LAND USE REVISION 2  
4/10/2020 LAND USE REVISION 1

Revised  
Schematic  
LAND USE  
SITE PLAN REVIEW  
01 NOVEMBER 2019

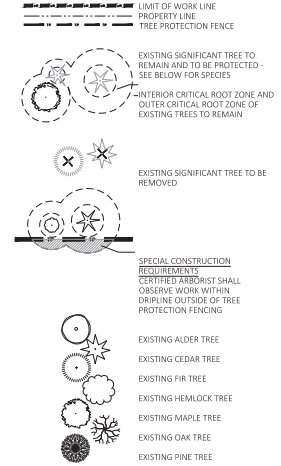
TREE RETENTION PLAN

TP-100





#### TREE RETENTION LEGEND



#### TREE RETENTION NOTES

1. SEE NOTES ON SHEET TP-001.
2. SEE SIGNIFICANT TREE INVENTORIES AS PROVIDED BY OTHERS FOR EXISTING SPECIES, SIZES AND MAPPING.
3. EXISTING SIGNIFICANT TREES TO REMAIN AND TO BE REMOVED AS SHOWN ON THIS PLAN ARE TAKEN FROM PROVIDED INVENTORIES AND DO NOT REPRESENT ALL EXISTING TREES.
4. EXISTING TREES ADJACENT TO BUT OUTSIDE OF THE LIMIT OF WORK, AND EXISTING TREES TO REMAIN, WITHIN THE LIMIT OF WORK, SHALL BE PROTECTED IN PLACE FOR THE DURATION OF CONSTRUCTION, INCLUDING DEMOLITION, ACCORDING TO THE CITY OF POULSBORO STANDARDS. SEE SHEET TP-105 FOR TREE PROTECTION DETAILS.
5. TREE PROTECTION FENCING SHALL NOT BE REMOVED WITHOUT PRIOR WRITTEN APPROVAL OF THE CITY OF POULSBORO.
6. ONCE ADJACENT CLEARING HAS TAKEN PLACE, RETAINED TREES AT FOREST EDGE SHALL BE ASSESSED BY AN ISA CERTIFIED AND TREE RISK ASSESSMENT QUALIFIED ARBORIST TO DETERMINE IF THEY ARE WINDFIRM.
7. REFER TO TSC/CONSTRUCTION SEQUENCING PLAN.

TREE PROTECTION FENCING SHALL BE IN PLACE AND VISIBLE PRIOR TO THE START OF CONSTRUCTION ACTIVITY, INCLUDING MATERIAL DELIVERIES. DO NOT RELOCATE FENCING AT ANYTIME WITHOUT WRITTEN APPROVAL FROM THE OWNER.



1800 112th Ave. NE, Suite 2200  
Bellevue, WA 98004  
Ph: (425) 451-0009  
1402 3rd Ave, Suite 415, Seattle,  
WA 98101 Ph: (206) 628-9133



Chief  
EDWARD ROSE & SONS  
MARK PERKOWSKI  
P.O. BOX 2011  
BLOOMFIELD HILLS, MI 48303  
(248) 866-5503

# OSLO BAY APARTMENTS

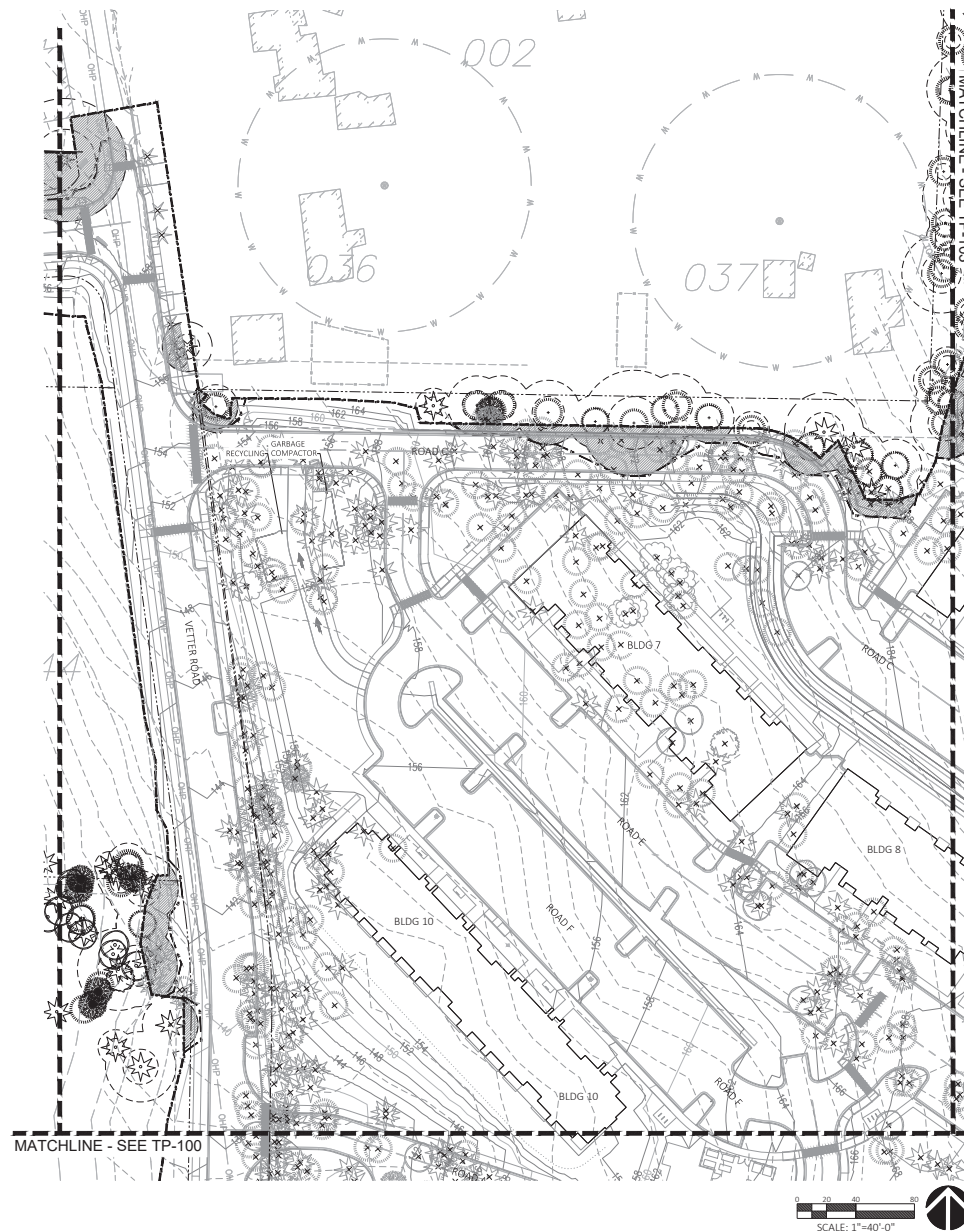
POULSBORO, WASHINGTON

03/03/2021 LAND USE REVISION 4  
03/01/2021 LAND USE REVISION 3  
11/04/2020 LAND USE REVISION 2  
4/30/2020 LAND USE REVISION 1

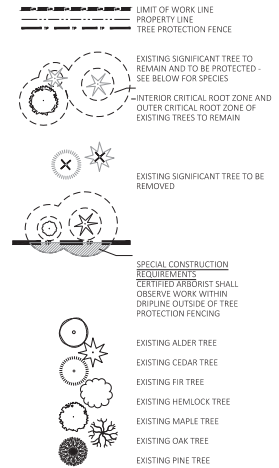
Revised  
Schematic  
LAND USE  
SITE PLAN REVIEW  
01 NOVEMBER 2019

TREE RETENTION PLAN

## TP-101



### TREE RETENTION LEGEND



### TREE RETENTION NOTES

1. SEE NOTES ON SHEET TP-001.
2. SEE SIGNIFICANT TREE INVENTORIES AS PROVIDED BY OTHERS FOR EXISTING SPECIES, SIZES AND MAPPING.
3. EXISTING SIGNIFICANT TREES TO REMAIN AND TO BE REMOVED AS SHOWN ON THIS PLAN ARE TAKEN FROM PROVIDED INVENTORIES AND DO NOT REPRESENT ALL EXISTING TREES.
4. EXISTING TREES ADJACENT TO BUT OUTSIDE OF THE LIMIT OF WORK, AND EXISTING TREES TO REMAIN WITHIN THE LIMIT OF WORK, SHALL BE PROTECTED IN PLACE FOR THE DURATION OF CONSTRUCTION, INCLUDING DEMOLITION, ACCORDING TO THE CITY OF POULSBORO STANDARDS. SEE SHEET TP-105 FOR TREE PROTECTION DETAILS.
5. TREE PROTECTION FENCING SHALL NOT BE REMOVED WITHOUT PRIOR WRITTEN APPROVAL OF THE CITY OF POULSBORO.
6. ONCE ADJACENT CLEARING HAS TAKEN PLACE, RETAINED TREES AT FOREST EDGE SHALL BE ASSESSED BY AN ISA CERTIFIED AND TREE RISK ASSESSMENT QUALIFIED ARBORIST TO DETERMINE IF THEY ARE WINDFIRM.
7. REFER TO TSC/CONSTRUCTION SEQUENCING PLAN.

TREE PROTECTION FENCING SHALL BE IN PLACE AND VISIBLE PRIOR TO THE START OF CONSTRUCTION ACTIVITY, INCLUDING MATERIAL DELIVERIES. DO NOT RELOCATE FENCING AT ANYTIME WITHOUT WRITTEN APPROVAL FROM THE OWNER.



1800 112th Ave NE, Suite 2200  
Bellevue, WA 98004  
Ph (425) 451-0009  
1402 3rd Ave, Suite 415, Seattle,  
WA 98101 Ph (206) 628-9133



Chief  
EDWARD ROSE & SONS  
MARK PERKOWSKI  
P.O. BOX 2011  
BLOOMFIELD HILLS, MI 48303  
(248) 866-5500

# OSLO BAY APARTMENTS

POULSBORO, WASHINGTON

09/03/2021 LAND USE REVISION 4  
09/01/2021 LAND USE REVISION 3  
11/04/2020 LAND USE REVISION 2  
4/30/2020 LAND USE REVISION 1

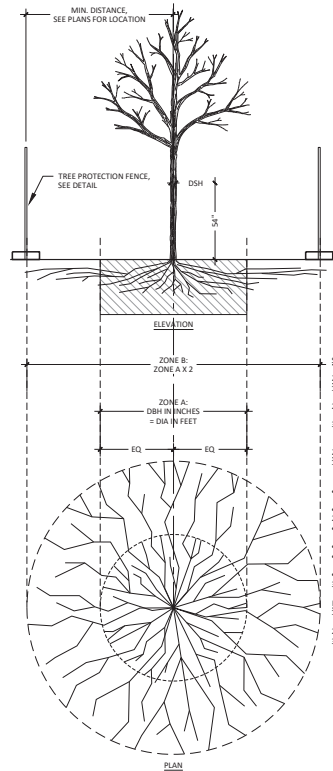
Revisions  
Site Plan  
LAND USE  
SITE PLAN REVIEW  
01 NOVEMBER 2019

TREE RETENTION PLAN

TP-102

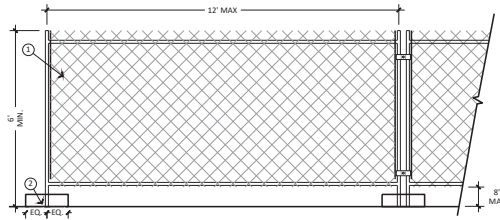






1 TREE PROTECTION  
SCALE: 1" = 1'-0"

- SPECIAL CONSTRUCTION REQUIREMENTS (TRENCHING/EXCAVATION)**
- ZONE A (INTERIOR CRITICAL ROOT ZONE)**
1. NO DISTURBANCE ALLOWED WITHOUT SITE-SPECIFIC INSPECTION AND APPROVAL OF METHODS TO MINIMIZE ROOT DAMAGE
  2. SEVERANCE OF ROOTS LARGER THAN 2" DIA REQUIRES ARBORIST'S APPROVAL
  3. TUNNELING REQUIRED TO INSTALL LINES 3'-0" BELOW GRADE OR DEEPER
- ZONE B (OUTER CRITICAL ROOT ZONE)**
1. OPERATION OF HEAVY EQUIPMENT AND/OR STOCKPILING OF MATERIALS SUBJECT TO ARBORIST'S APPROVAL. SURFACE PROTECTION MEASURES REQUIRED:
    - TEMPORARY ACCESS: MULCH LAYER, 6"-8" DEPTH, & 3/4" PLYWOOD SHEETS
    - RECURRING ACCESS: MULCH LAYER, 6"-8" DEPTH, & STEEL PLATES
  2. TRENCHING ALLOWED AS FOLLOWS:
    - EXCAVATION BY HAND OR WITH HAND-DRIVEN TRENCHER MAY BE REQUIRED;
    - AIR TRENCHING;
    - LIMIT TRENCH WIDTH: DO NOT DISTURB ZONE A; MAINTAIN 2/3 OR MORE OF ZONE B IN UNDISTURBED CONDITION;
    - OWNER APPROVAL.
  3. TUNNELING MAY BE REQUIRED FOR TRENCHES DEEPER THAN 3'-0"
- FENCING/ROOT PROTECTION**
1. FENCING TO BE PROVIDED AND MAINTAINED AT LIMITS OF OUTER CRITICAL ROOT ZONE-SEE PLANS FOR LOCATION
  2. ARBORIST'S APPROVAL REQUIRED FOR USE/ACCESS WITHIN ZONE B.
  3. PERMISSION FOR USE/ACCESS REQUIRES SURFACE PROTECTION FOR ALL UNFENCED, UNPAVED SURFACES WITHIN CRITICAL ROOT ZONE



2 TREE PROTECTION FENCE  
SCALE: 1/2" = 1'-0"



1800 112th Ave NE, Suite 2200  
Bellevue, WA 98004  
Ph (425) 451-0009  
1402 3rd Ave, Suite 415, Seattle,  
WA 98101 Ph (206) 628-9133



Chief  
EDWARD ROSE & SONS  
MARK PERKOWSKI  
P.O. BOX 2011  
BLOOMFIELD HILLS, MI 48303  
(248) 866-5500

# OSLO BAY APARTMENTS

POULSBORO, WASHINGTON

09/03/2021 LAND USE REVISION 4  
03/01/2021 LAND USE REVISION 3  
11/04/2020 LAND USE REVISION 2  
4/30/2020 LAND USE REVISION 1

Reviewed  
S. Karamba  
LAND USE  
SITE PLAN REVIEW  
01 NOVEMBER 2019

TREE RETENTION DETAILS

TP-104