

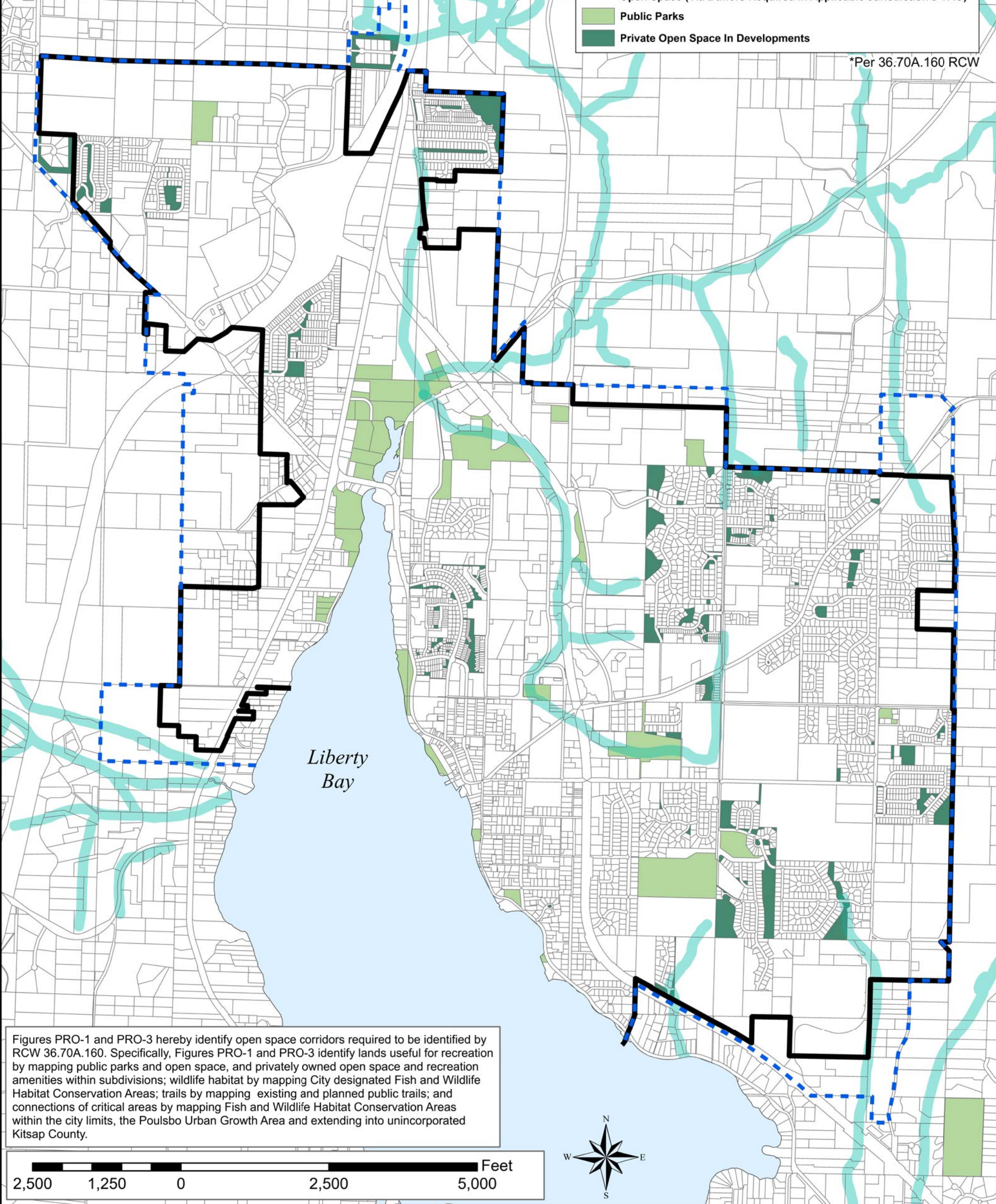
**CITY OF POULSBO**  
**Kitsap County, Washington**  
 Land Use Comprehensive Plan Map Series  
 Updated  
 October 2021  
 Figure PRO-1

**Citywide Park & Open Space Map**

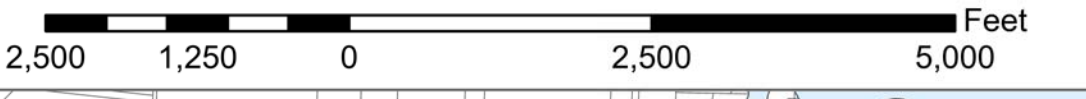
**Legend**

-  City Limits
-  Urban Growth Area
-  Open Space (Via Buffers Required in Applicable Jurisdiction's CAO)\*
-  Public Parks
-  Private Open Space In Developments

\*Per 36.70A.160 RCW



Figures PRO-1 and PRO-3 hereby identify open space corridors required to be identified by RCW 36.70A.160. Specifically, Figures PRO-1 and PRO-3 identify lands useful for recreation by mapping public parks and open space, and privately owned open space and recreation amenities within subdivisions; wildlife habitat by mapping City designated Fish and Wildlife Habitat Conservation Areas; trails by mapping existing and planned public trails; and connections of critical areas by mapping Fish and Wildlife Habitat Conservation Areas within the city limits, the Poulsbo Urban Growth Area and extending into unincorporated Kitsap County.



Critical Area and Comprehensive Plan Map Series Primary Map Sources and Original Scales:  
 W.S.D.N.R. Hydrography, Washington State Department of Fish and Wildlife 1:24,000  
 Kitsap County Assessor's Tax Maps 1:12,000 (Kitsap County IT, GIS Division)  
 Kitsap County Assessor's Land Use Table, used to determine Private Open Space and Parks and updated by the City of Poulsbo Planning Department

This comprehensive plan map series is intended for general comprehensive planning. These maps are schematic representations of physical features, infrastructure and land ownership boundaries. The map information was derived from available public records and existing sources, not from surveys. Studies may be necessary with project review to verify information.