





GLENNWOOD PLAT, A PLAT COMMUNITY

NW 1/4 OF THE NW 1/4 OF SEC. 10, TWP. 26 N., RNG. 1 E. W.M.  
CITY OF POULSBORO, KITSAP COUNTY, WASHINGTON

BASIS OF BEARING:

GRID NORTH, BASED UPON GLOBAL POSITIONING SYSTEM (GPS)  
LAMBERT GRID WASHINGTON STATE NORTH ZONE COORDINATES. THE  
NORTH AMERICAN DATUM OF 1983/2011 (NAD 83/2011 EPOCH 2010.00)  
GRID COORDINATES WERE FOUND TO BE 282300.69 / 1189568.09  
AT A 2" BRASS DISK, IN A MONUMENT CASE AT THE WEST QUARTER  
CORNER OF SECTION 10, TOWNSHIP 26 NORTH, RANGE 1 EAST, W.M..  
THE INVERSE OF BOTH THE SEA LEVEL CORRECTION FACTOR OF  
0.999986061 AND THE GRID SCALE FACTOR OF 0.9999617544 WAS  
APPLIED TO THE GRID COORDINATES FOR SHOWN GROUND DISTANCES.

DESCRIPTION:

PARCEL I:  
THE WEST HALF OF THE NORTHWEST QUARTER OF THE NORTHWEST  
QUARTER OF SECTION 10, TOWNSHIP 26 NORTH, RANGE 1 EAST, W.M..  
IN KITSAP COUNTY, WASHINGTON.

PARCEL II:  
AN EASEMENT FOR TEMPORARY TURN AROUND AS DESCRIBED AND  
DELINATED IN INSTRUMENT RECORDED UNDER AUDITOR'S FILE NO.  
202011090652, BEING A RE-RECORDING OF ADDITOR'S FILE NO.  
202008190190, BEING A PORTION OF THE NORTHEAST QUARTER OF THE  
NORTHEAST QUARTER, SECTION 9, TOWNSHIP 1 EAST, W.M., IN KITSAP  
COUNTY, WASHINGTON;

EXCEPT THAT PORTION LYING WITHIN THE ABOVE DESCRIBED PARCEL I.

LOT ADDRESS

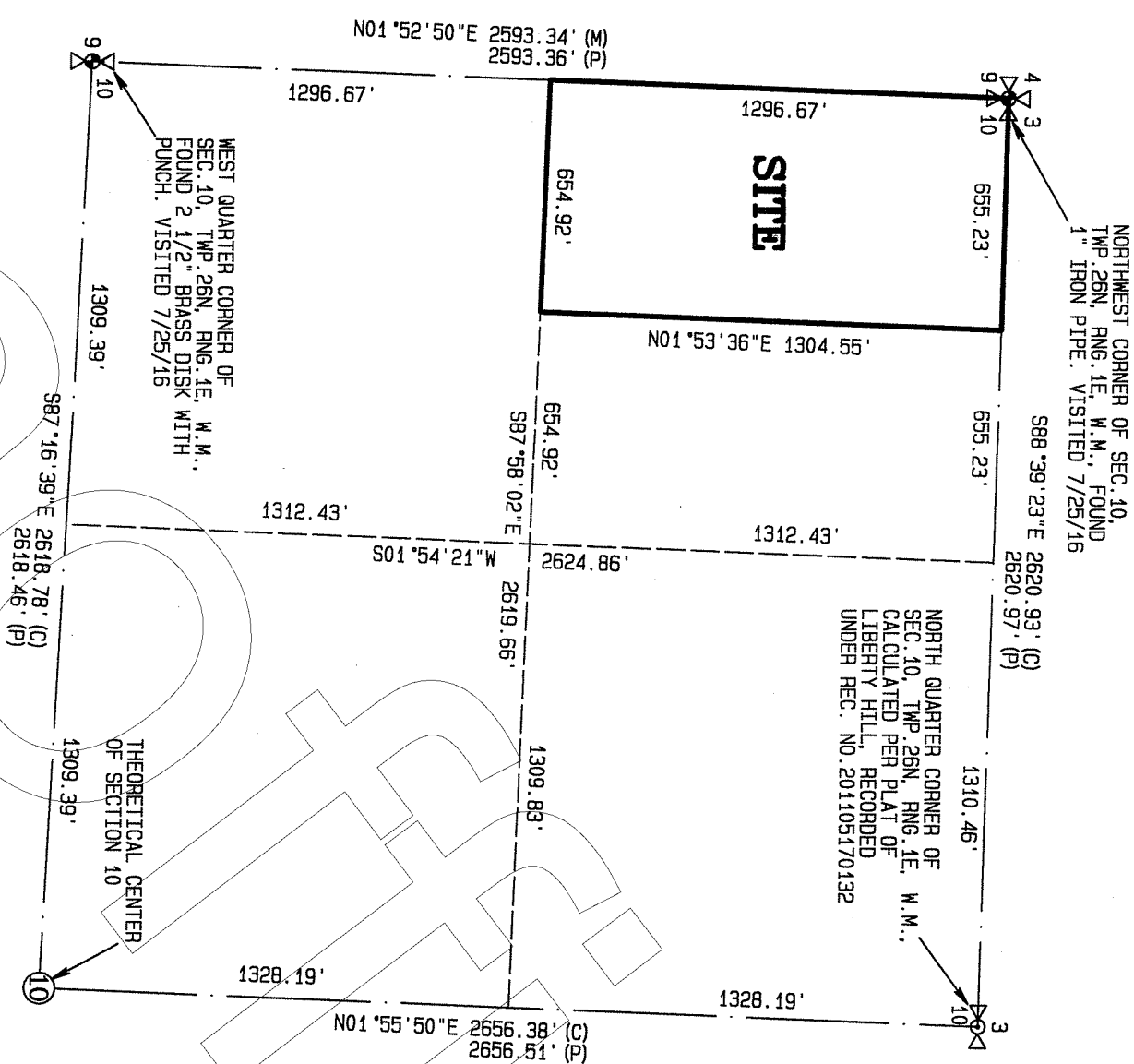
LOT NO.	ADDRESS	LOT NO.	ADDRESS	LOT NO.	ADDRESS
1	22100 JAMESON AVE NW	28	1406 NW SMOENSON CT	55	1789 ASHBY AVE NW
2	22102 JAMESON AVE NW	29	1408 NW SMOENSON CT	56	1787 ASHBY AVE NW
3	22104 JAMESON AVE NW	30	1410 NW SMOENSON CT	57	1785 ASHBY AVE NW
4	22106 JAMESON AVE NW	31	1412 NW SMOENSON CT	58	1783 ASHBY AVE NW
5	22108 JAMESON AVE NW	32	1414 NW SMOENSON CT	59	1781 ASHBY AVE NW
6	22110 JAMESON AVE NW	33	1416 NW SMOENSON CT	60	1779 ASHBY AVE NW
7	22112 JAMESON AVE NW	34	1418 NW SMOENSON CT	61	1777 ASHBY AVE NW
8	22114 JAMESON AVE NW	35	1420 NW SMOENSON CT	62	1775 ASHBY AVE NW
9	22116 JAMESON AVE NW	36	1422 NW SMOENSON CT	63	1773 ASHBY AVE NW
10	22118 JAMESON AVE NW	37	1424 NW SMOENSON CT	64	1771 ASHBY AVE NW
11	22120 JAMESON AVE NW	38	1426 NW SMOENSON CT	65	1769 ASHBY AVE NW
12	22122 JAMESON AVE NW	39	1428 NW SMOENSON CT	66	1767 ASHBY AVE NW
13	22124 JAMESON AVE NW	40	1430 NW SMOENSON CT	67	1765 ASHBY AVE NW
14	22126 JAMESON AVE NW	41	1432 NW SMOENSON CT	68	1763 ASHBY AVE NW
15	22128 JAMESON AVE NW	42	1434 NW SMOENSON CT	69	1761 ASHBY AVE NW
16	22130 JAMESON AVE NW	43	1436 NW SMOENSON CT	70	1759 ASHBY AVE NW
17	22132 JAMESON AVE NW	44	1438 NW SMOENSON CT	71	1757 ASHBY AVE NW
18	22134 JAMESON AVE NW	45	1440 NW SMOENSON CT	72	1755 ASHBY AVE NW
19	22136 JAMESON AVE NW	46	1442 NW SMOENSON CT	73	1753 ASHBY AVE NW
20	22138 JAMESON AVE NW	47	1444 NW SMOENSON CT	74	1751 ASHBY AVE NW
21	22140 JAMESON AVE NW	48	1446 NW SMOENSON CT	75	1749 ASHBY AVE NW
22	22142 JAMESON AVE NW	49	1448 NW SMOENSON CT	76	1747 ASHBY AVE NW
23	22144 JAMESON AVE NW	50	1450 NW SMOENSON CT	77	1745 ASHBY AVE NW
24	22146 JAMESON AVE NW	51	1452 NW SMOENSON CT	78	1743 ASHBY AVE NW
25	22148 JAMESON AVE NW	52	1454 NW SMOENSON CT	79	1741 ASHBY AVE NW
26	22150 JAMESON AVE NW	53	1456 NW SMOENSON CT	80	1739 ASHBY AVE NW
27	22152 JAMESON AVE NW	54	1458 NW SMOENSON CT	81	1737 ASHBY AVE NW

LINES AND CURVES TABLE

CURVE	ARC	DELTA	RADIUS
C55	184.30'	24.24° 57'	442.50'
C56	53.98'	7.08° 14'	442.50'
C57	70.23'	9.18° 14'	442.50'
C58	60.20'	7.98° 29'	442.50'
C59	24.68'	48.46° 45'	29.00'
C60	24.84'	49.04° 02'	29.00'
C61	49.52'	97.49° 51'	29.00'
C62	48.43'	79.17° 00'	35.00'
C63	110.85'	21.31° 46'	295.00'
C64	65.68'	15.21° 35'	245.00'
C65	63.38'	103.24° 50'	35.00'
C66	57.74'	94.31° 14'	35.00'
C67	5.64'	9.13° 35'	35.00'
C68	105.41'	29.05° 25'	207.50'
C69	54.73'	15.06° 46'	207.50'
C70	46.52'	12.50° 46'	207.50'
C71	4.16'	1.08° 53'	207.50'
C72	19.93'	7.01° 43'	162.50'
C73	33.54'	76.32° 30'	25.00'
C74	111.35'	42.32° 02'	150.00'
C75	61.53'	117.31° 15'	30.00'
C76	42.01'	24.04° 16'	100.00'
C77	41.95'	14.47° 23'	162.50'
C78	53.60'	14.47° 23'	207.50'
C79	77.00'	27.09° 02'	162.50'
C80	37.10'	13.04° 53'	162.50'
C81	39.90'	14.04° 09'	162.50'
C82	67.22'	110.02° 09'	35.00'
C83	163.07'	42.48° 48'	245.00'
C84	208.82'	48.26° 22'	247.00'
C85	92.76'	21.31° 06'	247.00'
C86	116.06'	26.55° 16'	247.00'
C87	20.04'	6.33° 38'	175.00'
C88	128.50'	33.27° 57'	220.00'
C89	71.55'	18.38° 02'	220.00'
C90	60.63'	13.11° 12'	220.00'
C91	6.32'	1.38° 43'	220.00'
C92	49.26'	80.38° 46'	35.00'
C93	54.39'	88.02° 40'	35.00'
C94	27.13'	44.24° 50'	35.00'
C95	27.26'	44.37° 50'	35.00'
C96	117.87'	58.43° 37'	115.00'
C97	29.01'	14.27° 17'	115.00'
C98	68.19'	33.58° 23'	115.00'
C99	20.67'	10° 17' 57"	115.00'
C100	249.20'	48.23° 58'	295.00'
C101	148.05'	43.21° 01'	197.00'
C102	64.93'	106.17° 05'	35.00'
C103	98.52'	30.20° 49'	185.00'
C104	23.42'	7.12° 53'	185.00'
C105	72.02'	22.11° 12'	185.00'
C106	3.07'	0.56° 44'	185.00'
C107	80.84'	36.40° 22'	125.30'

CURVE	ARC	DELTA	RADIUS
C1	96.43'	32.47° 17'	168.50'
C2	107.78'	32.14° 48'	191.50'
C3	46.11'	14.47° 23'	178.50'
C4	49.43'	14.47° 23'	191.50'
C5	21.39'	6.23° 58'	191.50'
C6	28.04'	8.23° 25'	191.50'
C7	125.79'	57.39° 23'	125.00'
C8	242.44'	31.17° 28'	448.50'
C9	242.44'	30.58° 19'	448.50'
C10	2.50'	0.19° 09'	448.50'
C11	134.27'	58.43° 37'	131.00'
C12	146.46'	41.32° 33'	202.00'
C13	424.12'	90.00° 00'	270.00'
C14	141.59'	30.02° 47'	270.00'
C15	282.52'	59.57° 13'	270.00'
C16	187.68'	48.26° 22'	222.00'
C17	22.90'	6.33° 38'	200.00'
C18	24.90'	11.17° 48'	125.30'
C19	84.81'	47.56° 10'	101.30'
C20	25.76'	6.33° 38'	225.00'
C21	51.20'	83.48° 37'	35.00'
C22	44.84'	73.23° 54'	35.00'
C23	6.36'	10.24° 43'	35.00'
C24	142.53'	35.21° 10'	231.00'
C25	41.31'	10.14° 47'	231.00'
C26	40.73'	10.06° 07'	231.00'
C27	43.98'	10.54° 34'	231.00'
C28	16.51'	4.09° 42'	231.00'
C29	164.00'	58.43° 37'	160.00'
C30	25.55'	9.09° 03'	160.00'
C31	49.66'	17.46° 55'	160.00'
C32	38.70'	13.51° 31'	160.00'
C33	43.76'	15.40° 08'	160.00'
C34	6.33'	2.16° 00'	160.00'
C35	33.66'	80.20° 45'	24.00'
C36	76.45'	22.10° 42'	197.50'
C37	39.27'	90.00° 00'	25.00'
C38	24.73'	65.31° 30'	19.00'
C39	128.37'	144.13° 00'	51.00'
C40	13.51'	40.43° 36'	19.00'
C41	8.22'	24.47° 54'	19.00'
C42	56.01'	62.55° 31'	51.00'
C43	72.36'	81.17° 29'	51.00'
C44	83.07'	93.19° 49'	51.00'
C45	44.83'	50.21° 52'	51.00'
C46	38.24'	42.57° 57'	51.00'
C47	45.55'	90.00° 00'	29.00'
C48	25.65'	9.38° 17'	162.50'
C49	64.29'	103.15° 01'	35.00'
C50	202.91'	24.20° 49'	477.50'
C51	57.63'	6.54° 54'	477.50'
C52	51.76'	6.12° 38'	477.50'
C53	50.61'	6.04° 22'	477.50'
C54	42.91'	5.08° 55'	477.50'

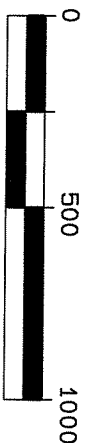
LINE	BEARING	DISTANCE
L1	N01°52'50"E	16.00'
L2	N01°52'50"E	16.00'
L3	N01°52'50"E	8.99'
L4	N87°58'02"W	13.50'
L5	N87°58'02"W	1.66'
L6	N01°53'36"E	16.00'
L7	N88°39'37"W	0.79'
L8	S01°20'23"W	6.00'
L9	S01°53'27"W	37.87'
L10	S88°07'08"E	59.57'
L11	S43°26'30"W	31.32'
L12	S88°07'08"E	60.02'
L13	S40°17'54"W	23.55'
L14	S84°07'40"W	13.05'
L15	S88°39'37"E	8.61'
L16	S88°39'37"E	14.14'
L17	N88°07'08"W	7.17'
L18	N88°07'08"W	52.40'
L19	N88°07'08"W	59.57'
L20	S88°07'08"E	51.03'
L21	S88°07'08"E	8.34'
L22	S88°07'08"E	60.02'
L23	N88°07'08"W	51.03'
L24	N87°51'52"W	48.23'
L25	N86°31'34"W	53.24'
L26	N66°58'10"W	75.25'
L27	N66°58'10"W	75.25'
L28	N34°07'40"E	75.25'
L29	N34°07'40"E	4.35'
L30	N01°53'27"E	3.56'
L31	N01°53'27"E	37.94'
L32	N01°53'27"E	42.22'
L33	N88°07'08"W	60.02'
L34	S88°07'08"E	60.02'



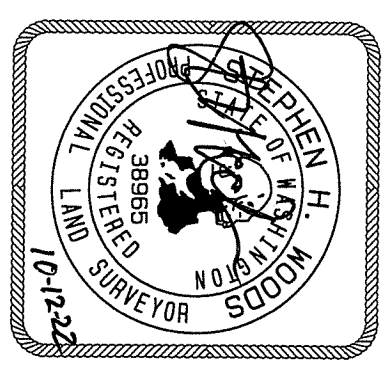
SURVEY CONTROL

LEGEND:

- = FOUND MONUMENT AS NOTED.
- (C) = CALCULATED.
- (M) = MEASURED
- = CALCULATED MONUMENT POSITION
- (P) = LIBERTY HILL, VOL. 33, PGS. 68-73



SCALE:  
1" = 500'



**CONTOUR**  
ENGINEERING & PLANNING  
CIVIL ENGINEERS-SURVEYORS-LAND PLANNERS  
4706 97th Street NW, Suite 100 Gig Harbor, WA 98335  
Phone: 253-857-5494 Fax: 253-509-0044 info@contourpllc.com

DRAWN BY: LN  
DATE: SEP 30, 2022  
SCALE: 1" = 500'

CHECKED BY: S WOODS  
JOB NAME: 20-221  
JOB NO.: 20-221B

INDEX DATE:  
NW1/4 NW1/4 SEC10, T26N, R1E, WM

SURVEY FOR:  
CENTURY COMMUNITIES  
16108 ASH WAY, SUITE 201  
LYNNWOOD, WA 98087

KITSAP COUNTY, WASHINGTON

SHEET 2 OF 6

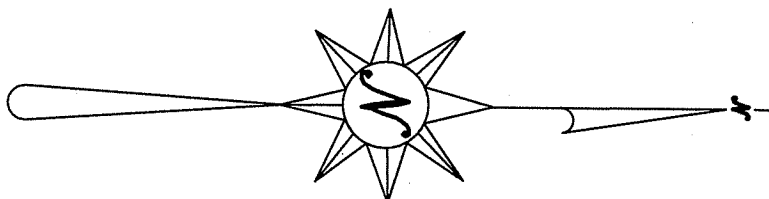
GLENNWOOD PLAT, A PLAT COMMUNITY  
NW 1/4 OF THE NW 1/4 OF SEC. 10, TWP. 26 N., RNG. 1 E. W.M.  
CITY OF POULSBORO, KITSAP COUNTY, WASHINGTON



LEGEND:

- = FOUND MONUMENT AS NOTED
- ⊗ = SET 3" BRASS DISK PER KITSAP COUNTY STANDARD MONUMENT
- = SET #4 REBAR WITH RED PLASTIC CAP STAMPED "CONTOUR LS 38965"
- × = SET LEAD & TACK WITH WASHER STAMPED "LS 38965"
- = SET 2" OFFSET REBAR AND CAP STAMPED "CONTOUR LS 38965"
- BSBL = BUILDING SETBACK LINE
- E1 = 10' UTILITY EASEMENT. SEE NOTES 3 & 4 ON SHEET 1
- E2 = 5' STORM DRAINAGE & TREE MAINTENANCE EASEMENT
- SEE NOTES 5 & 7 ON SHEET 1

SCALE:  
1" = 50'



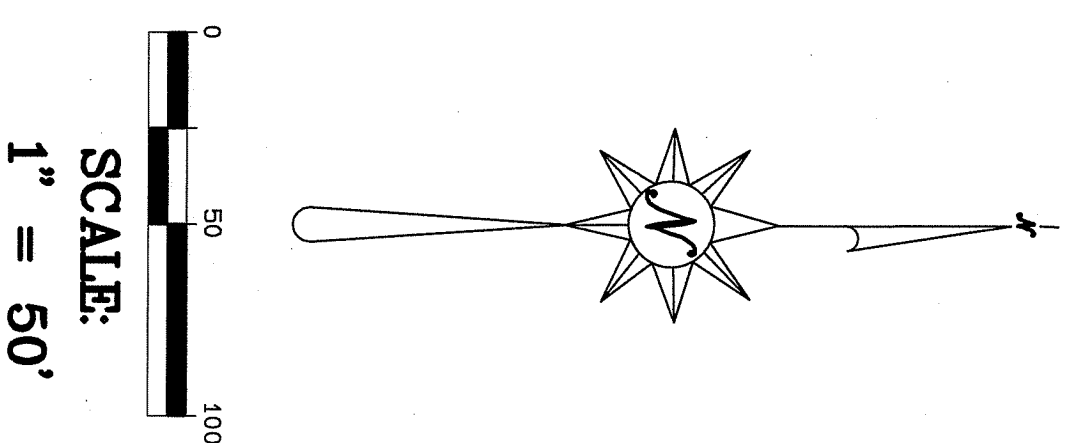
**CONTOUR**  
ENGINEERING & PLANNING  
CIVIL ENGINEERS-SURVEYORS-PLANNERS  
406 97th Street NW, Suite 100, Lynnwood, WA 98035  
Phone: 206-857-5454 Fax: 206-857-5454  
info@contourllc.com

DATE	SEP 30, 2022	DRAWN BY	LN
SCALE	1" = 50'	CHECKED BY	S WOODS
		JOB NAME	20-221
		JOB NO.	20-221B

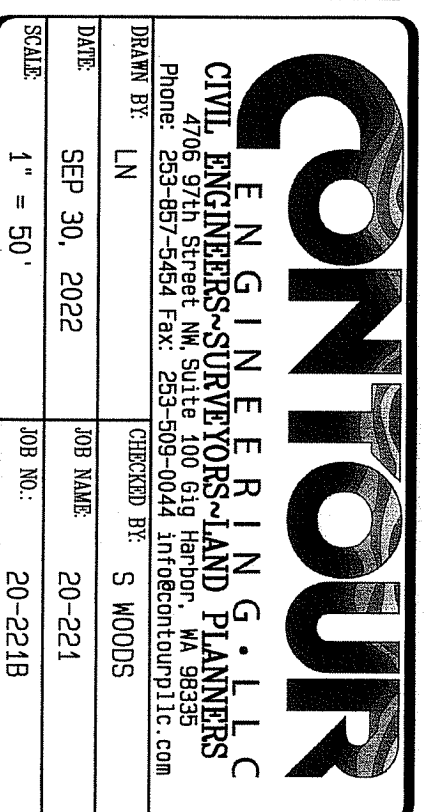
INDEX DATA	NW1/4 NW1/4 SEC10, T26N, R1E, WM
SURVEY FOR	CENTURY COMMUNITIES 16108 ASH WAY, SUITE 201 LYNNWOOD, WA 98037
KITSAP COUNTY, WASHINGTON	
SHEET 3 OF 6	



NW 1/4 OF THE NW 1/4 OF SEC. 10, TWP. 26 N., RNG. 1 E. W.M.  
CITY OF POULSBORO, KITSAP COUNTY, WASHINGTON



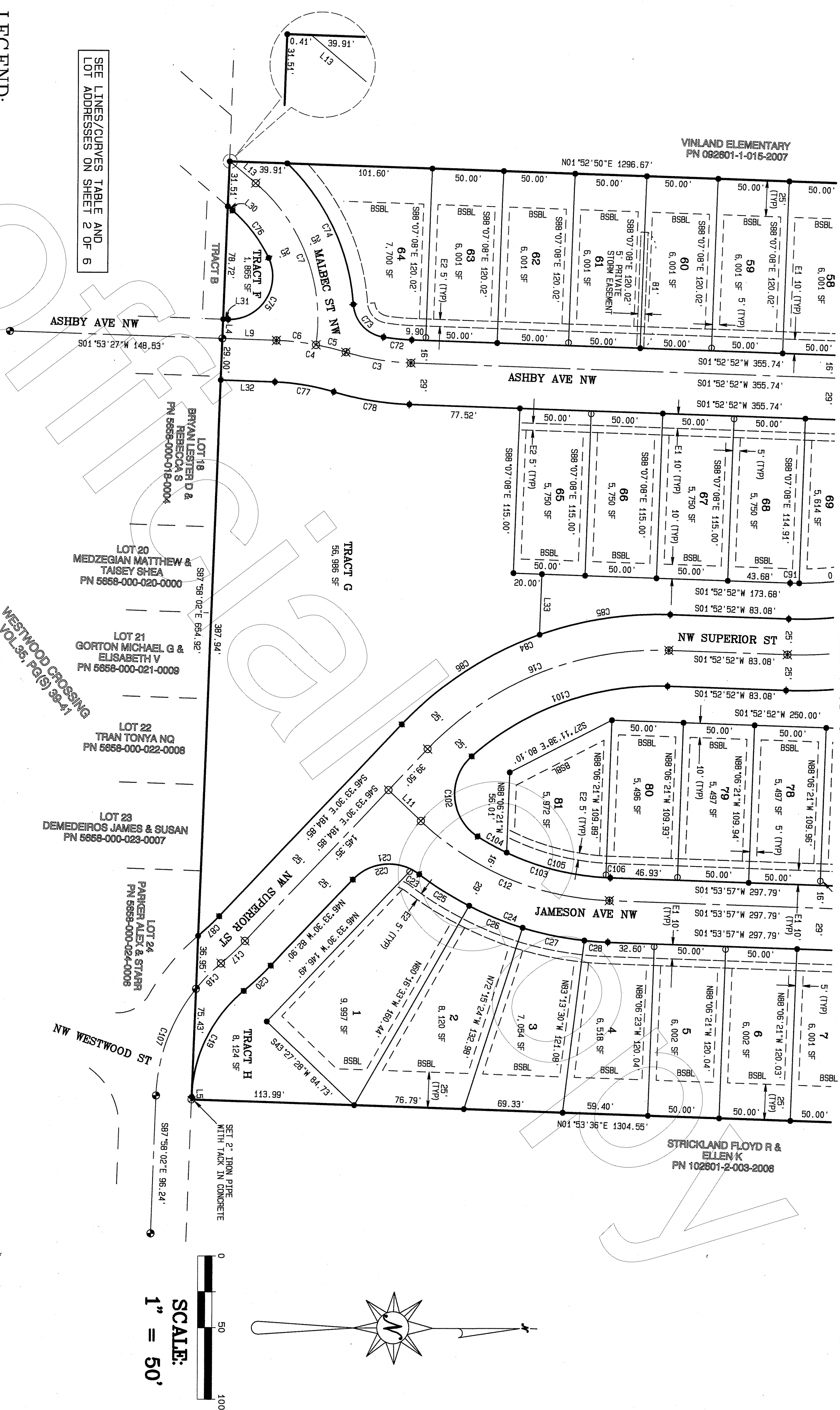
1 = FOUND MONUMENT AS NOTED  
 2 = SET 3" BRASS DISK PER KITASAP COUNTY STANDARD MONUMENT  
 3 = SET #4 REBAR WITH RED PLASTIC CAP STAMPED "CONTOUR LS 38965".  
 4 = SET LEAD & TACK WITH WASHER STAMPED "LS 38965".  
 5 = SET 2" OFFSET REBAR AND CAP STAMPED "CONTOUR LS 38965".  
 BSBL = BUILDING SETBACK LINE  
 E1 = 10' UTILITY EASEMENT. SEE NOTES 3 & 4 ON SHEET 1  
 E2 = 5' STORM DRAINAGE & TREE MAINTENANCE EASEMENT  
 SEE NOTES 5 & 7 ON SHEET 1



INDEX DATA  
NW1/4 NW1/4 SEC10, T26N, R1E, WM  
STURRY RD  
CENTURY COMMUNITIES  
16108 ASH WAY, SUITE 201  
LYNNWOOD, WA 98087  
KITSAP COUNTY, WASHINGTON  
SHEET 4 OF 6

GLENNWOOD PLAT, A PLAT COMMUNITY  
NW 1/4 OF THE NW 1/4 OF SEC. 10, TWP. 26 N., RNG. 1 E. W.M.  
CITY OF POULSBORO, KITSAP COUNTY, WASHINGTON

SEE SHEET 4 OF 6



LEGEND:

- = FOUND MOUNUMENT AS NOTED
- ⊗ = SET 3" BRASS DISK PER KITSAP COUNTY STANDARD MONUMENT
- = SET #4 REBAR WITH RED PLASTIC CAP STAMPED "CONTOUR LS 38965"
- X = SET LEAD & JACK WITH WASHER STAMPED "LS 38965"
- = SET 2" OFFSET REBAR AND CAP STAMPED "CONTOUR LS 38965"
- BSBL = BUILDING SETBACK LINE
- E1 = 10' UTILITY EASEMENT. SEE NOTES 3 & 4 ON SHEET 1
- E2 = 5' STORM DRAINAGE & TREE MAINTENANCE EASEMENT
- SEE NOTES 5 & 7 ON SHEET 1

SEE LINES/CURVES TABLE AND  
LOT ADDRESSES ON SHEET 2 OF 6



**CONTOUR**  
ENGINEERING & SURVEYING, LLC  
CIVIL ENGINEERS-SURVEYORS-LAND PLANNERS  
4705 5TH STREET NW, SUITE 100, B19 HARBOR, WA 98335  
Phone: 253-857-3434 FAX: 253-505-7044 info@contourplc.com  
DRAWN BY: LN  
DATE: SEP 30, 2022  
JOB NAME: 20-221  
JOB NO.: 20-221B

INDEX DATE:  
NW1/4 NW1/4 SEC10, T26N, R1E, WM  
SUNNY FOLEY  
CENTURY COMMUNITIES  
16108 ASH WAY, SUITE 201  
LYNNWOOD, WA 98087  
KITSAP COUNTY, WASHINGTON

VOLUME/PAGE  
36/76

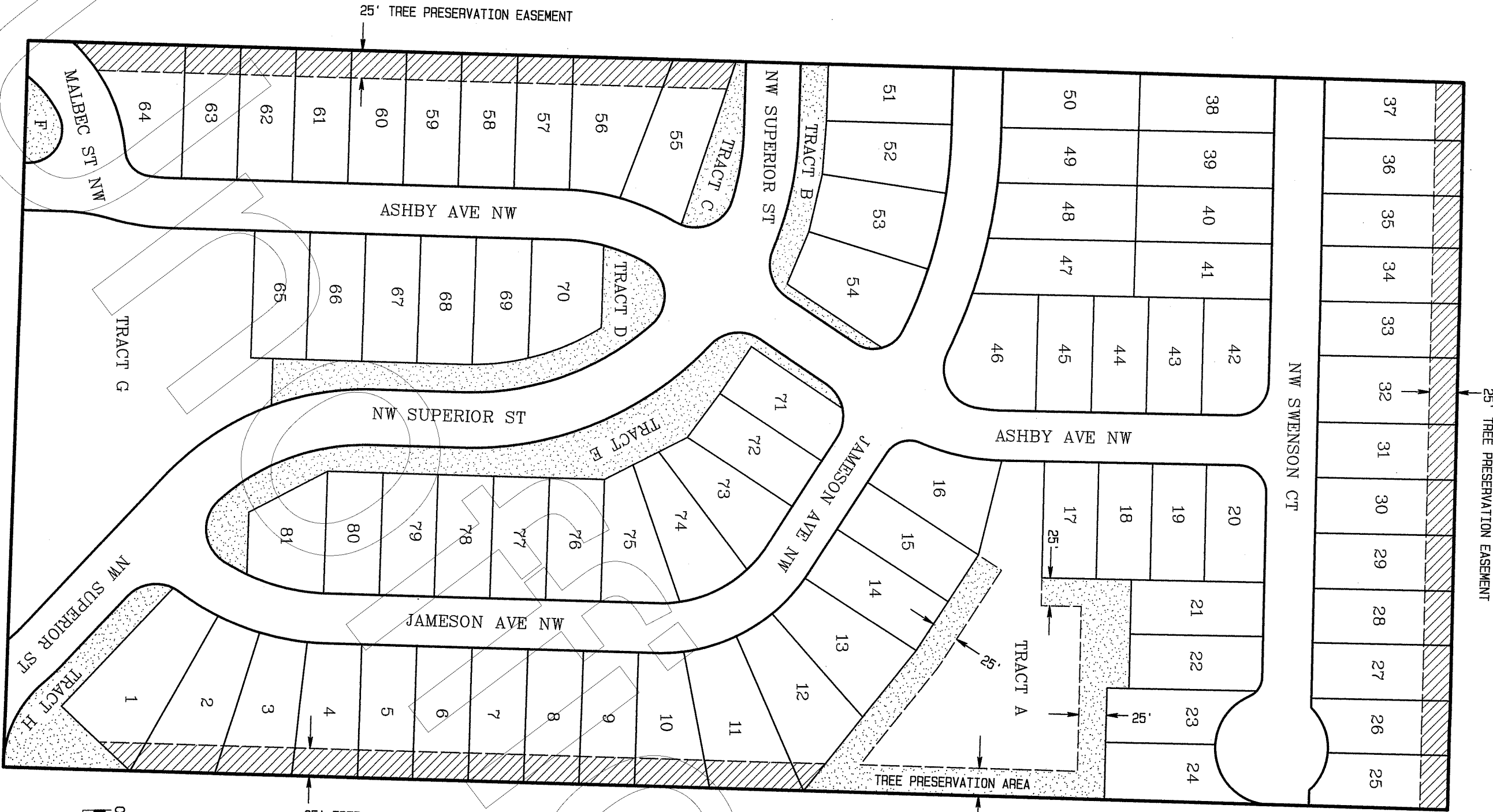
SHEET 5 OF 6

202210200105

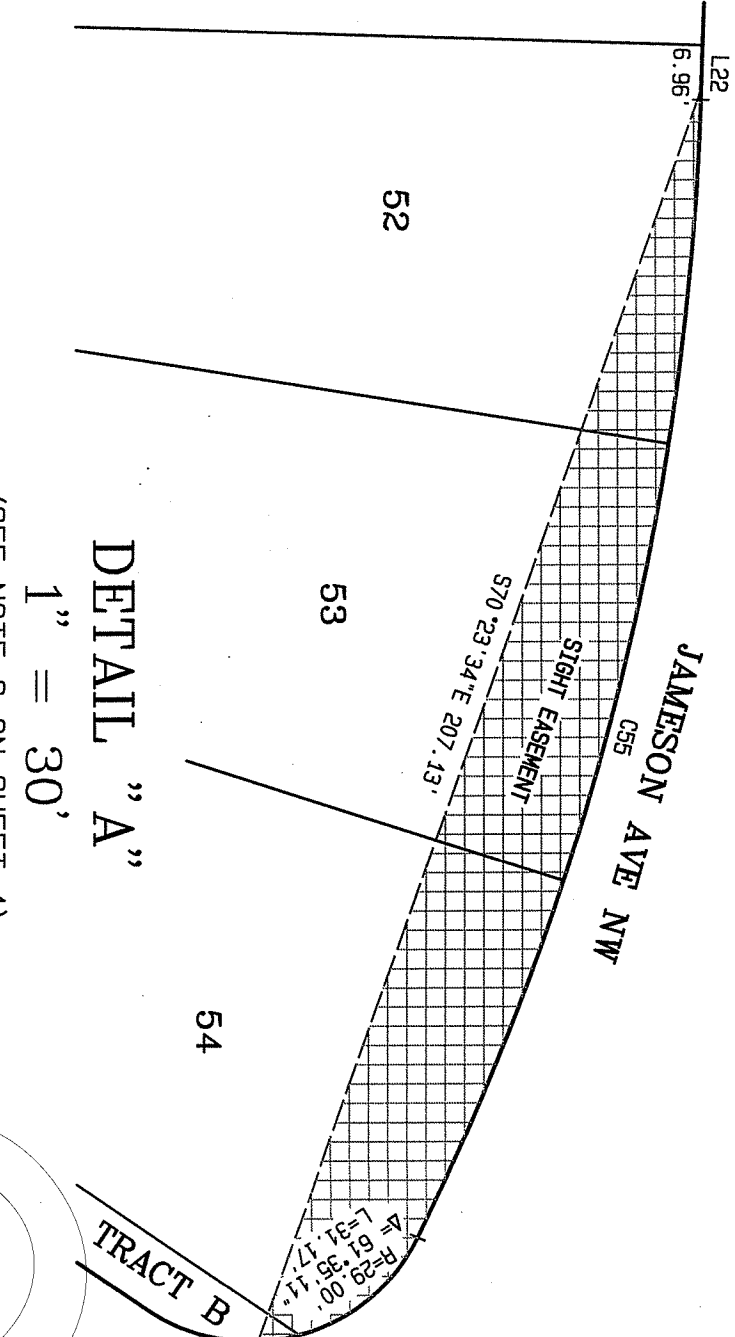
36/76

GLENNWOOD PLAT, A PLAT COMMUNITY  
NW 1/4 OF THE NW 1/4 OF SEC. 10, TWP. 26 N., RNG. 1 E. W.M.  
CITY OF POULSBORO, KITSAP COUNTY, WASHINGTON

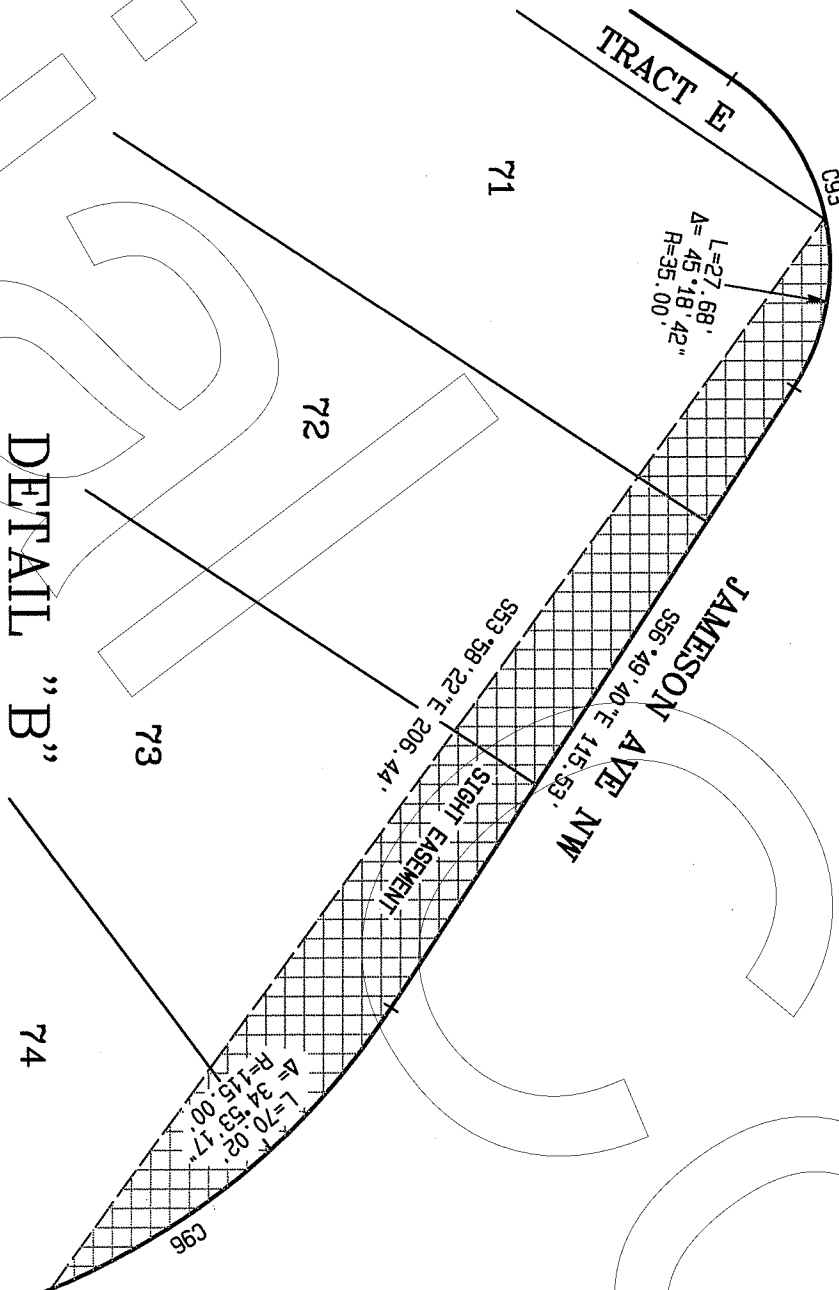
LEGEND:  
= TREE PRESERVATION EASEMENT  
(SEE NOTES 6 & 7 ON SHEET 1)  
= TREE PRESERVATION AREA  
(SEE NOTES 6 & 7 ON SHEET 1)



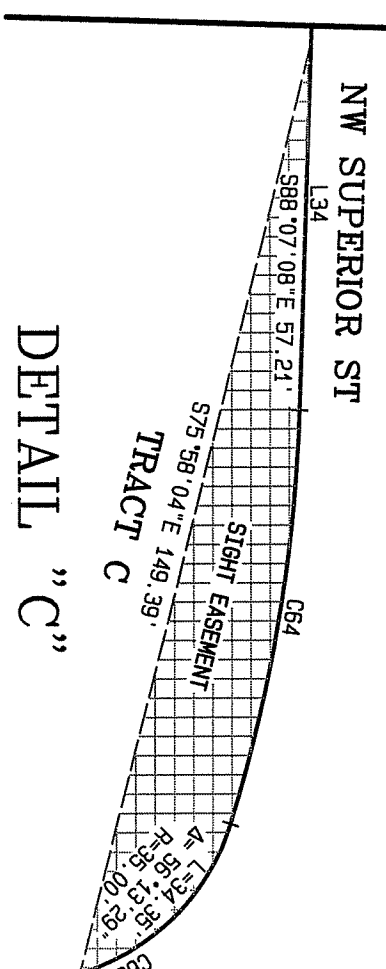
DETAIL "A"  
1" = 30'  
(SEE NOTE 8 ON SHEET 1)



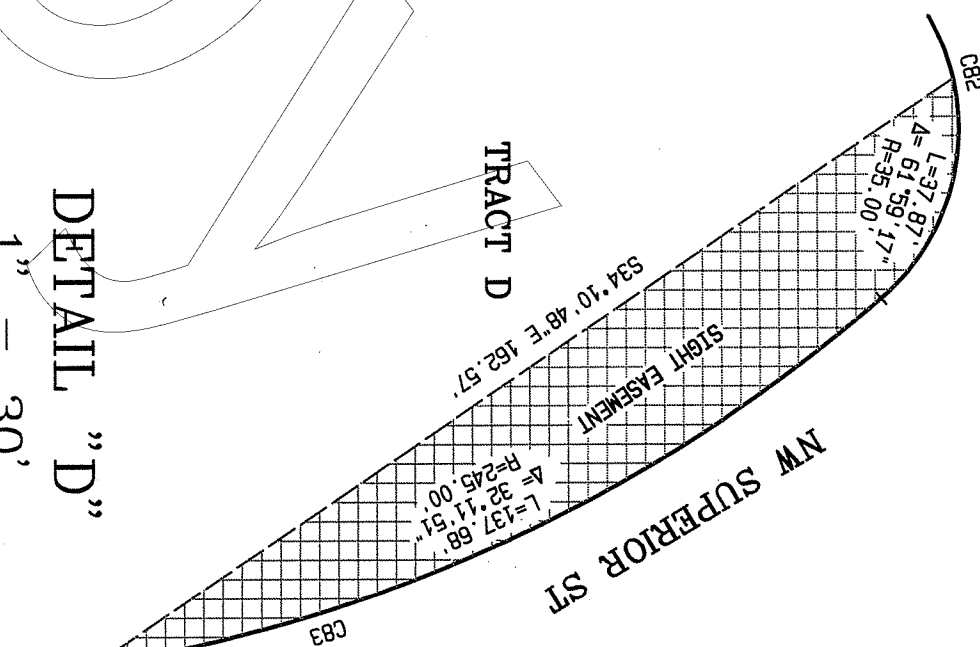
DETAIL "B"  
1" = 30'  
(SEE NOTE 8 ON SHEET 1)



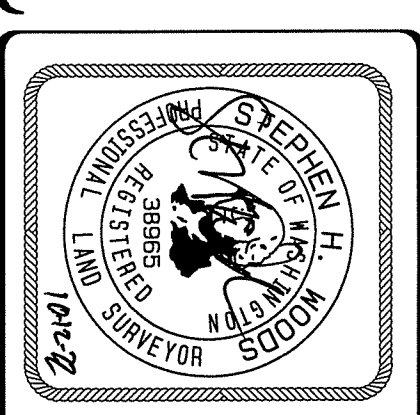
DETAIL "C"  
1" = 30'  
(SEE NOTE 8 ON SHEET 1)



DETAIL "D"  
1" = 30'  
(SEE NOTE 8 ON SHEET 1)



SEE LINES/CURVES TABLE ON SHEET 2 OF 6



**CONTOUR**  
ENGINEERING, LLC  
CIVIL ENGINEERS-SURVEYORS-LAND PLANNERS  
16108 ASH WAY, SUITE 201  
LYNNWOOD, WA 98037  
Phone: 206-857-5464 Fax: 206-857-5464  
Email: info@contourpllc.com  
DRAWN BY: LN  
DATE: SEP 30, 2022  
SCALE: 1" = 100'  
CHECKED BY: S WOODS  
JOB NAME: 20-221  
JOB NO.: 20-221B

INDEX DATE:  
NW1/4 NW1/4 SEC10, T26N, R1E, W1M  
SURVEY FOR:  
CENTURY COMMUNITIES  
16108 ASH WAY, SUITE 201  
LYNNWOOD, WA 98037  
KITSAP COUNTY, WASHINGTON  
SHEET 6 OF 6

202210200105 36/77