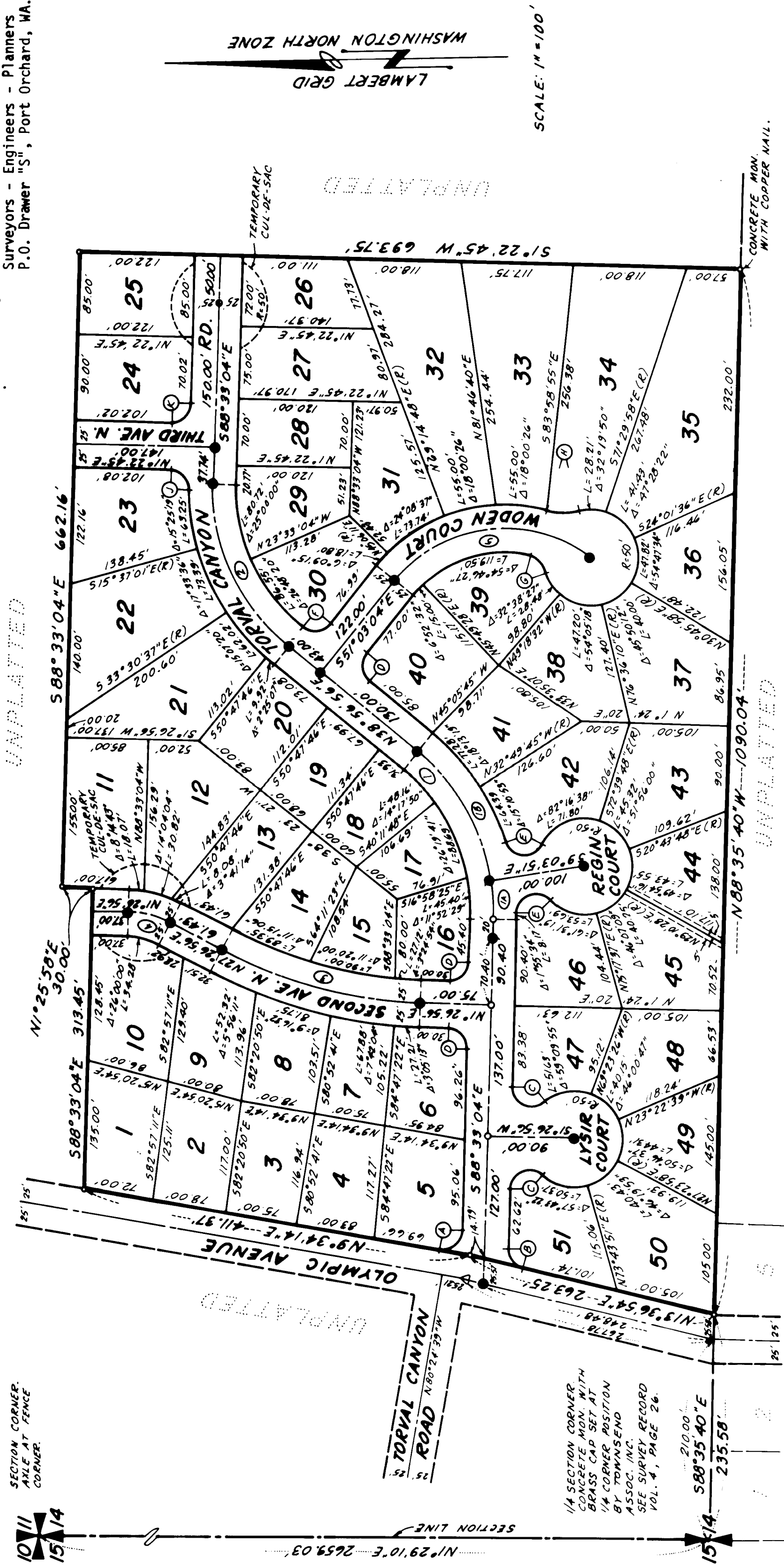


# HEWITT'S ADDITION

SITUATE WITHIN THE NW 1/4, SECTION 14, T26N, R1E, W. M.  
CITY OF POULSBORO  
KITSAP COUNTY, WASHINGTON

Prepared by: MCGINNIS, OLSON & ROWLAND  
Surveyors - Engineers - Planners  
P.O. Drawer "S", Port Orchard, WA. 98366



### NOTES:

- All lot corners are staked with 3/4" I.D. Galvanized Iron Pipe & 2" x 2" wood marker.
- Temporary cul-de-sacs on Torval Canyon Road and Second Avenue North are to be automatically vacated when roads are extended.
- Easements for drainage facilities are reserved over a 2 1/2 foot wide strip along each side of interior lot lines and over the rear 5.00 feet of each lot.

### CENTERLINE CURVE TABLE

Curve No.	Delta	Radius	Length	Tangent	Chord
1	52°30'00"	218.00	199.75	107.51	192.84
1A	10°30'47"	218.00	40.00	20.06	39.94
1B	41°59'13"	218.00	159.75	83.65	156.20
2	52°30'00"	210.00	192.42	103.56	185.76
3	26°00'00"	480.00	217.82	110.82	215.95
4	26°00'00"	100.54	45.62	23.21	45.23
5	88°00'00"	150.00	230.38	144.85	208.40

### RIGHT-OF-WAY FILLET CURVE TABLE

Curve No.	Delta	Radius	Length	Tangent	Chord
A	98°07'18"	20.00	34.25	23.06	30.22
B	77°50'00"	20.00	27.17	16.15	25.13
C	130°00'17"	20.00	45.38	42.89	36.25
D	90°00'00"	20.00	31.42	20.00	28.28
E	137°17'34"	20.00	47.92	51.16	37.25
F	90°41'40"	20.00	31.66	20.24	28.46
G	62°44'00"	24.90	27.26	15.18	25.92
H	29°05'28"	64.01	32.50	16.61	32.15
J	88°25'33"	20.00	30.87	19.46	27.89
K	89°55'49"	20.00	31.39	19.98	28.27

### LEGEND

- 1/8" x 1/8" x 1/8" CAP EXCEPT AS NOTED
- Plat boundary.
- Utilities easement line. (Also see Note 3.)
- Monument set - 2" O.D. Iron Pipe, filled with concrete, with brass disk.
- Street centerline curve identification number.
- Street right-of-way fillet curve identification letter.

### CERTIFICATION

I hereby certify that the plat of "Hewitt's Addition" is based upon the actual survey and subdivision of Section 14, Township 26 North, Range 1 East, W.M., as required by State Statutes, that the distances, courses, and angles are shown thereon correctly; that the monuments (except those approved for setting at a later date) have been set and lot corners have been staked correctly on the ground; that I fully complied with the provisions of the State Statutes and Regulations governing platting.

*Robert M. McGinnis*  
Robert M. McGinnis, Professional Land Surveyor  
License Number 232-03-262. Cert. No. 9398.

