

Plat of POULSBO PLACE

PHASE 1, Division 1A
Situate in
Section 14, Township 26 North, Range 1 East, W.M.
City of Poulsbo
Kitsap County, Washington

NUMBER	R=	Δ	L=
C2	37.50	130°01'08"	85.10
C3	62.50	18°34'42"	20.27
C4	62.50	45°16'55"	49.39
C7	37.50	57°44'50"	37.80
C8	37.50	23°04'26"	15.10
C9	37.50	25°35'05"	16.75
C10	37.50	20°27'47"	13.39
C11	37.50	03°09'00"	2.06
C12	1065.00	01°24'56"	26.31
C22	1065.00	03°47'37"	70.51
C23	91.00	29°00'48"	46.08
C24	22.00	66°45'46"	25.64

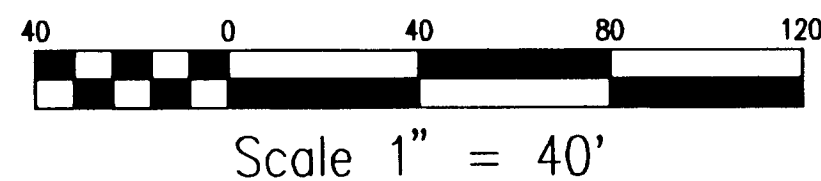
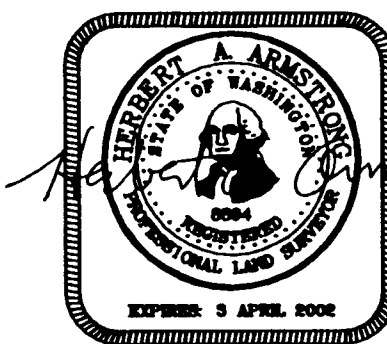
NUMBER	DIRECTION
R51	N89°40'56"W
R52	S89°51'18"W
R53	S44°16'12"W
R54	S21°11'46"W

NOTE:
ALL LOT CORNERS ARE MARKED WITH
3/4" IRON PIPE AND 2"x2" LOT STAKES
OR PK NAIL AND BRASS IF LOT CORNERS
LAY IN CONCRETE OR PAVEMENT.

NUMBER	DIRECTION	DISTANCE
L1	S46°40'11"W	6.06'
L2	S18°07'24"E	6.63'
L3	N71°52'36"E	10.73'
L4	S18°07'24"E	6.30'
L5	N19°40'50"E	8.17'
L6	N87°29'31"W	5.00'
L7	S02°30'04"W	21.60'
L8	S02°24'16"W	11.91'
L31	N04°54'20"E	15.03'
L32	S88°48'06"E	3.95'
L49	N02°30'04"E	1.71'
L50	S70°19'10"E	6.50'
L51	N53°26'56"E	7.66'

LEGEND:

- = SET MAG CAP IN CONCRETE (5)
- = SET 4" DIA. CONCRETE MONUMENT WITH MAG CAP (1)
- = BOUNDARY OF PHASE I, DIVISION 1A
- - - = PROPERTY LINE
- - - - = EASEMENT
- - - - - = BUILDING SETBACK LINE



STEEL PIN IN
CONC.(FEB. 1991)

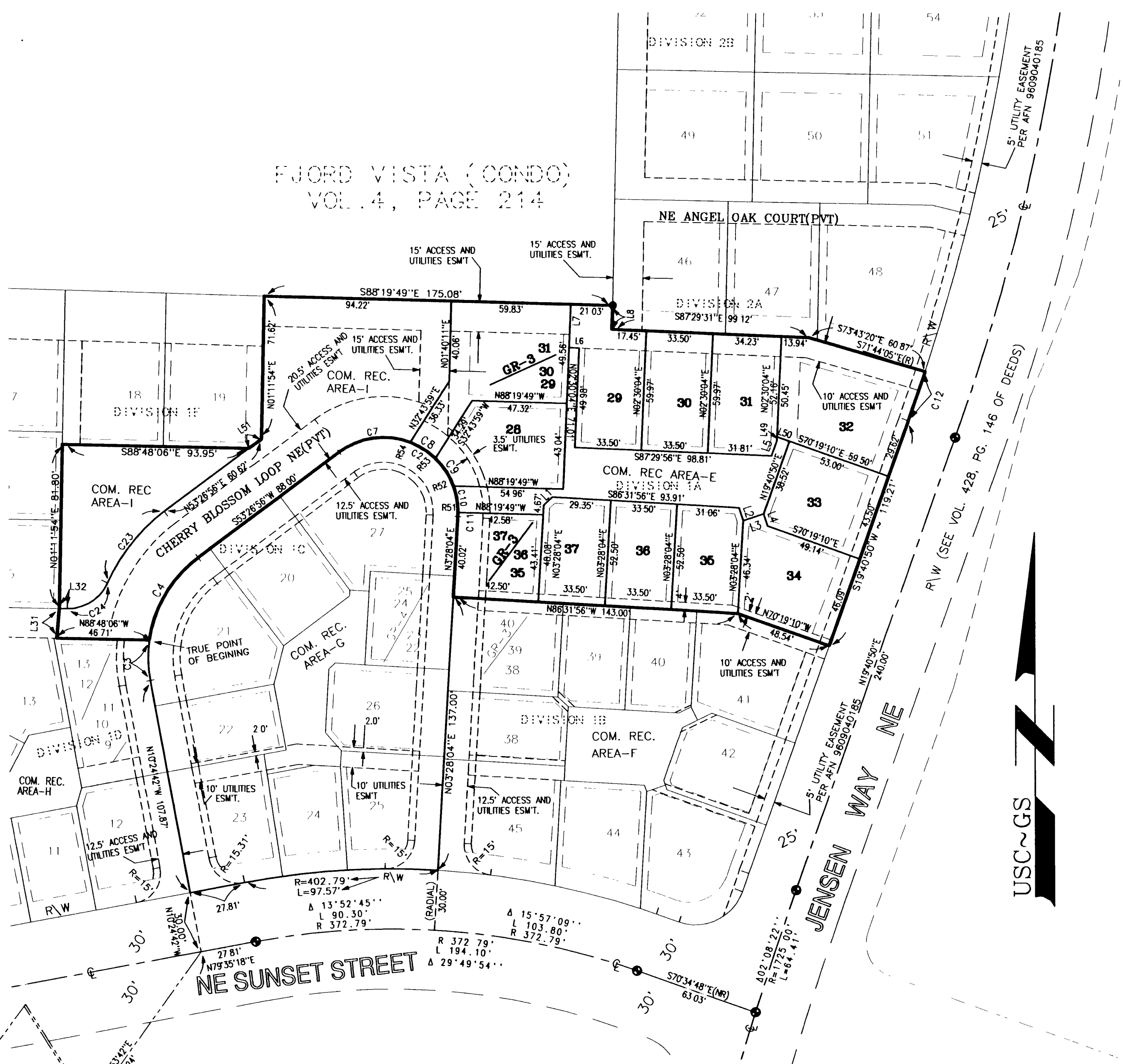
SECTION LINE

N88°10'52"W
2647.66'

CONC. MON IN CASE
CENTERLINE 8TH AVE. NE
(FEB. 1991)



FJORD VISTA (CONDO)
VOL. 4, PAGE 214



REVISION SEPTEMBER 28, 2000
REVISION SEPTEMBER 20, 2000

A.D.A. ENGINEERING, LLC

SURVEYORS~ENGINEERS~PLANNERS



P.O. BOX 847
POULSBO, WA 98370
PHONE: (360) 779-6633
B.I. PHONE: (206) 842-6123
FAX: (360) 779-7031

CHECKED: PETE	JOB NUMBER: 98-E3270	SCALE: 1" = 40'
DATE: JUNE 2000	DRAWN BY M E D	SHEET 1 OF 3

200010100021 VOL 30 PG 149

Plat of POULSBO PLACE

PHASE 1, Division 2A
Situates in
Section 14, Township 26 North, Range 1 East, W.M.
City of Poulsbo
Kitsap County, Washington

NUMBER	R=	Δ	L=
C3	62.50	18°34'42"	20.27
C12	1065.00	01°24'56"	26.31
C13	1065.00	04°23'56"	81.77
C22	1065.00	03°47'37"	70.51

NUMBER	DIRECTION	DISTANCE
LB	N02°24'16"E	11.91'
L31	N04°54'20"E	15.03'
L51	N53°26'56"E	7.66'

NOTE:
ALL LOT CORNERS ARE MARKED WITH
3/4" IRON PIPE AND 2"x2" LOT STAKES
OR PK NAIL AND BRASS IF LOT CORNERS
LAY IN CONCRETE OR PAVEMENT.

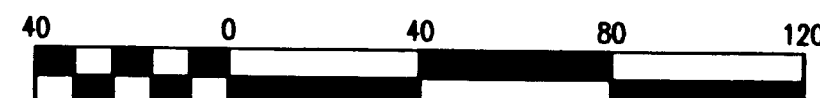
LEGEND:

- = SET MAG CAP IN CONCRETE (5)
- = SET 4" DIA. CONCRETE MONUMENT WITH MAG CAP (1)

- = BOUNDARY OF PHASE 1, DIVISION 2A
- = PROPERTY LINE
- - - = EASEMENT
- - - = BUILDING SETBACK LINE



10-16-00

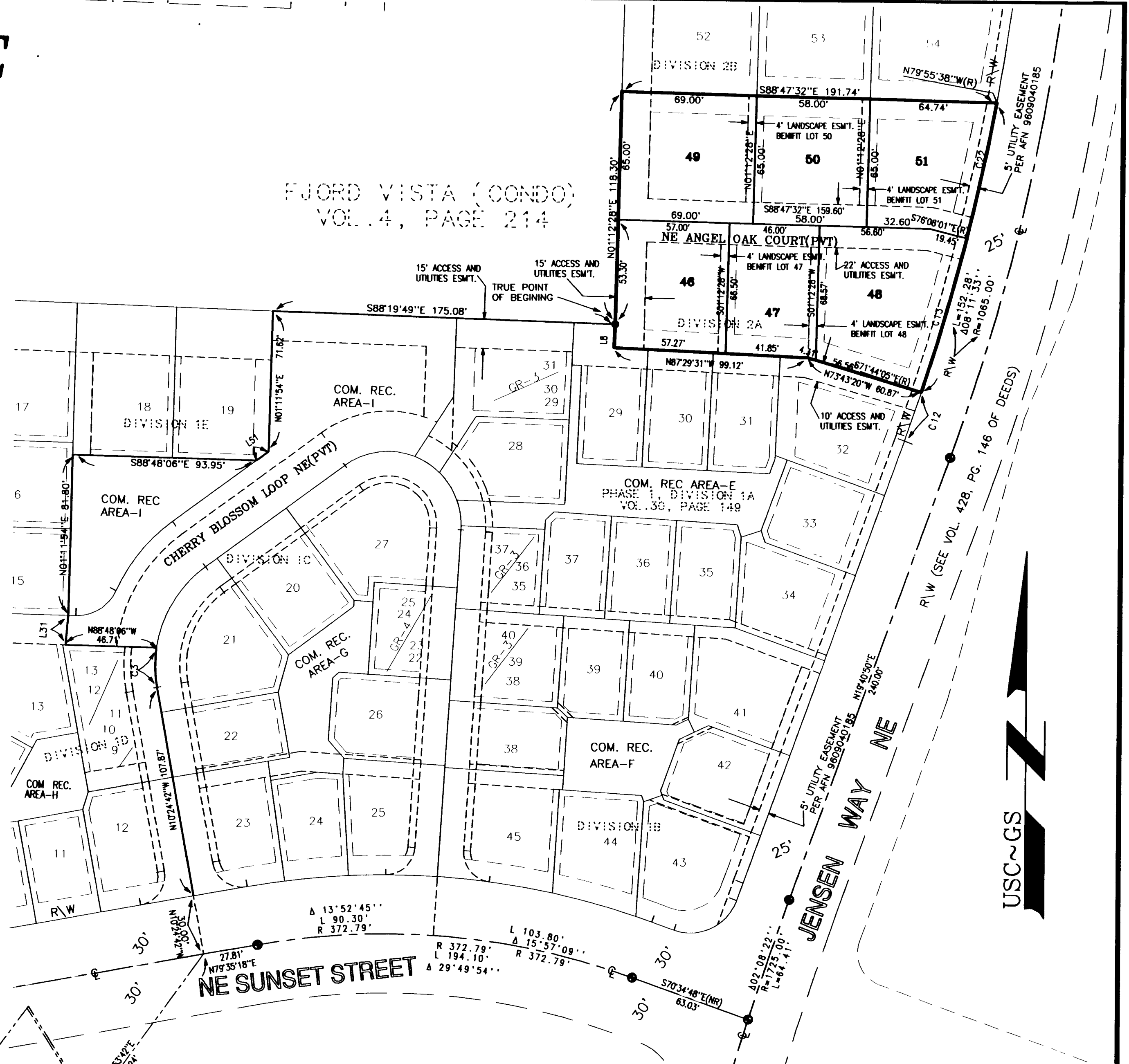


Scale 1" = 40'

STEEL PIN IN CONC. (FEB. 1991)
SECTION LINE
15/14
22/23

CONC. MON IN CASE OF CENTERLINE 8TH AVE. NE (FEB. 1991)
14
23

FJORD VISTA (CONDO)
VOL. 4, PAGE 214

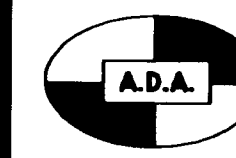


REVISION OCTOBER 13, 2000
REVISION OCTOBER 11, 2000

A.D.A. ENGINEERING, LLC

SURVEYORS~ENGINEERS~PLANNERS

P.O. BOX 847
POULSBO, WA 98370
PHONE: (360) 779-6633
B.I. PHONE: (206) 842-6123
FAX: (360) 779-7031



CHECKED: PETE	JOB NUMBER: 98-E3270	SCALE: 1" = 40'
DATE: JUNE 2000	DRAWN BY M.E.D.	SHEET 1 OF 3

2000/0240008

VOL. 30

Pg. 152

Plat of
POULSBO PLACE

PHASE 1, Division 2E
Situates in
Section 14, Township 28 North, Range 1 East, W.M.
City of Poulsbo
Kitsap County, Washington

CURVE TABLE

NUMBER	R='	Δ=	L='
C46	150.00	18°26'02"	48.26
C47	130.00	18°26'00"	41.82
C48	25.00	90°09'21"	39.34
C49	1065.00	01°28'11"	27.32
C167	1065.00	02°49'06"	52.39


LINE TABLE

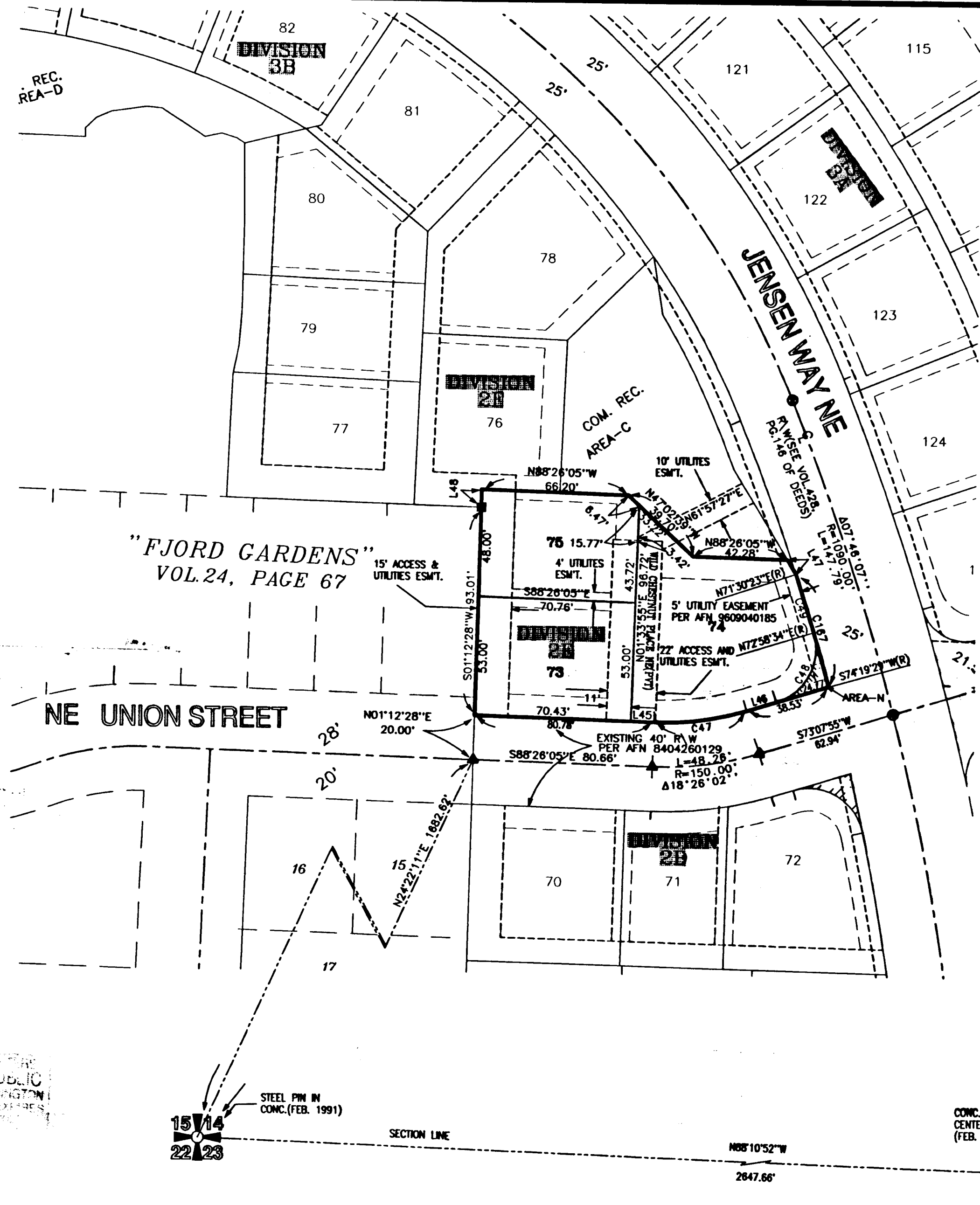
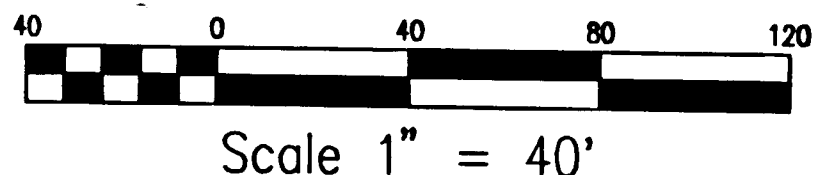
NUMBER	DIRECTION	DISTANCE
L45	S88°26'05"E	10.35'
L46	N73°07'55"E	13.76'
L47	N31°21'39"W	7.47'
L48	S01°12'28"W	7.99'

- NOTE:**
- 1) ALL LOT CORNERS ARE MARKED WITH 3/4" IRON PIPES AND 2"x2" LOT STAKES OR PK NAIL AND BRASS IF LOT CORNERS LAY IN CONCRETE OR PAVEMENT.
 - 2) AREA-N SHALL BE DEDICATED TO THE CITY OF POULSBO BY THE RECORDATION OF THIS PLAT

LEGEND:

- = SET MAG CAP IN CONCRETE (2)
- = EXISTING 4" DIA. CONCRETE MONUMENT WITH MAG CAP PER AFN3045027(1)
- △ = EXISTING 2" BRASS CAP IN CONCRETE (3)
- = BOUNDARY OF PHASE 1, DIVISION 2E
- - - = PROPERTY LINE
- - - = EASEMENT
- - - = BUILDING SETBACK LINE


7-30-01



NOTARY PUBLIC
STATE OF WASHINGTON
COMMISSION EXPIRES
3 APRIL 2006

A.D.A. ENGINEERING, LLC
SURVEYORS~ENGINEERS~PLANNERS
P.O. BOX 847
POULSBO, WA 98370
PHONE: (360) 779-6633
B.I. PHONE: (206) 842-6123
FAX: (360) 779-7031

CHECKED: PETE	JOB NUMBER: 98-E3270	SCALE: 1" = 40'
DATE: JULY 2001	DRAWN BY M.E.D.	SHEET 3 OF 3

Plat of POULSBO PLACE

PHASE 1, Division 2F
Situate in
Section 14, Township 28 North, Range 1 East, W.M.
City of Poulsbo
Kitsap County, Washington

CURVE TABLE

NUMBER	R='	Δ	L='
C52	390.00	11°57'30"	81.40
C53	390.00	11°37'30"	79.13
C131	1065.00	03°55'33"	72.97
C132	390.00	12°13'18"	83.19
C133	379.50	11°30'41"	76.25

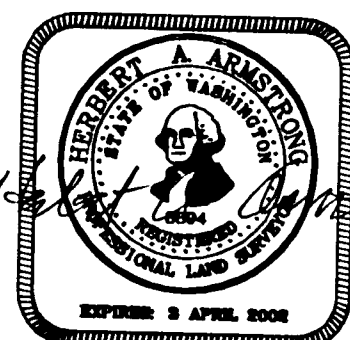
NOTE:

- 1) ALL LOT CORNERS ARE MARKED WITH 3/4" IRON PIPES AND 2"x2" LOT STAKES OR PK NAIL AND BRASS IF LOT CORNERS LAY IN CONCRETE OR PAVEMENT.
- 2) AREA-O SHALL BE DEDICATED TO THE CITY OF POULSBO BY THE RECORDATION OF THIS PLAT

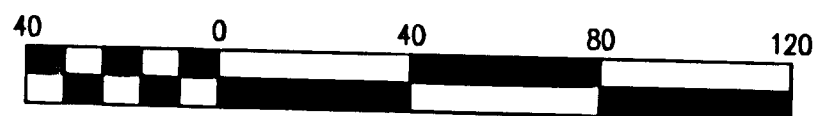
LEGEND:

- = SET MAG CAP IN CONCRETE (3)
- = EXISTING 4" DIA. CONCRETE MONUMENT WITH MAG CAP PER AFN3045027(3)
- △ = EXISTING 2" BRASS CAP IN CONCRETE (3)
- = SET 4" DIA. CONCRETE MONUMENT WITH MAG. CAP(1)

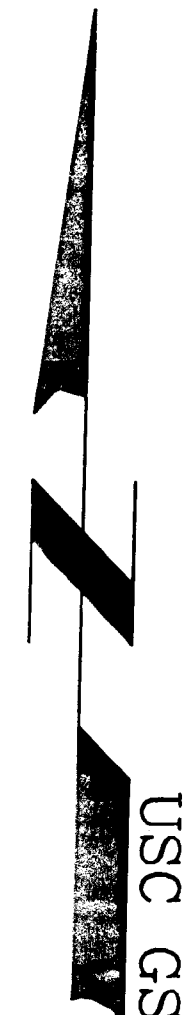
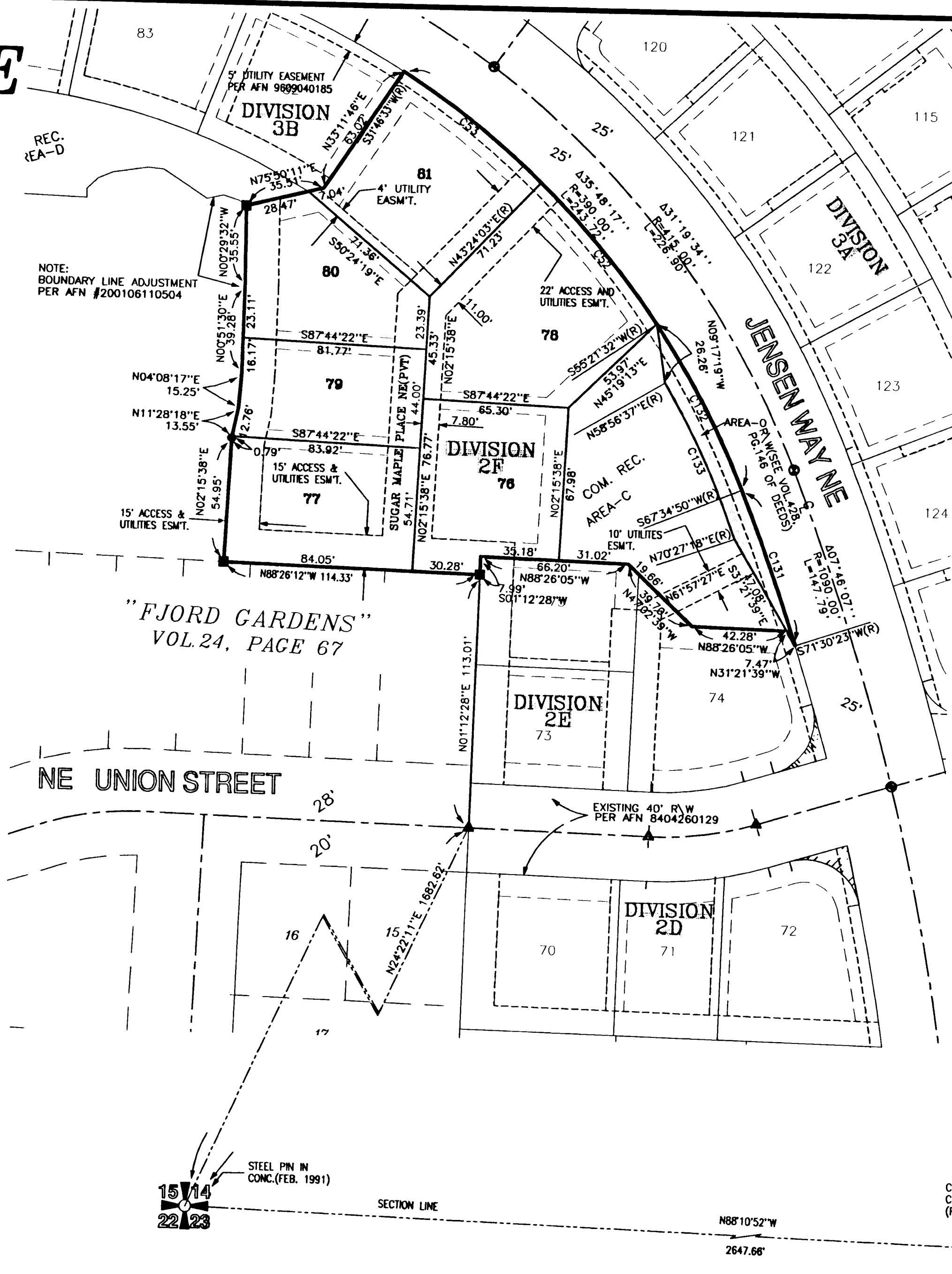
- = BOUNDARY OF PHASE 1, DIVISION 2F
- = PROPERTY LINE
- - - = EASEMENT
- - - = BUILDING SETBACK LINE



10-8-01



Scale 1" = 40'



A.D.A. ENGINEERING, LLC
SURVEYORS~ENGINEERS~PLANNERS
P.O. BOX 847
POULSBO, WA 98370
PHONE: (360) 779-6633
B.I. PHONE: (206) 842-6123
FAX: (360) 779-7031

CHECKED: PETE	JOB NUMBER: 98-E3270	SCALE: 1" = 40'
DATE: JULY 2001	DRAWN BY M.E.D.	SHEET 3 OF 3

VOL 30 Pg 209 200110290240

Plat of POULSBO PLACE

PHASE 1, Division 3
Situates In
Section 14, Township 26 North, Range 1 East, W.M.
City of Poulsbo
Kitsap County, Washington

CURVE TABLE

NUMBER	R="	Δ	L="
C1	62.50	63°51'38"	69.66
C2	37.50	130°01'08"	85.10
C3	62.50	18°34'42"	20.27
C4	62.50	45°16'55"	49.39
C12	1065.00	01°24'56"	26.31
C14	1750.00	00°18'39"	9.49
C15	25.00	90°03'01"	39.29
C16	402.79	01°13'45"	8.64
C17	402.79	06°19'08"	44.42
C18	402.79	08°24'15"	59.08
C19	402.79	06°29'46"	45.67
C20	402.79	04°39'49"	32.79
C21	402.79	02°43'11"	19.12
C22	1065.00	03°47'37"	70.51

LINE TABLE

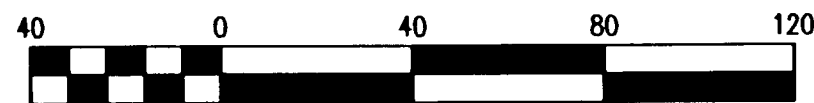
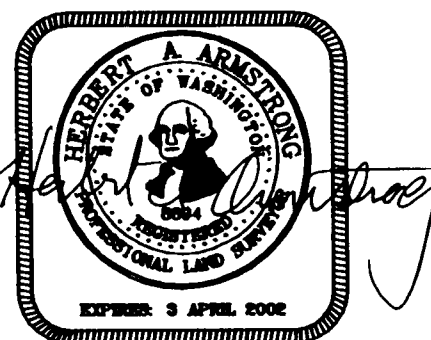
NUMBER	DIRECTION	DISTANCE
L10	S25°19'10"E	7.23'
L11	N64°40'50"E	6.90'
L13	S47°08'11"E	7.09'
L14	S19°03'36"E	3.42'
L15	N70°56'24"E	10.00'
L16	S19°03'36"E	2.38'
L17	S19°03'36"E	2.53'
L18	S70°34'48"E	12.11'
L19	S03°28'04"W	10.00'
L20	N86°31'56"W	9.71'
L21	S03°28'04"W	3.03'
L22	N48°28'04"E	4.49'
L23	S41°31'56"E	12.08'
L24	N03°28'04"E	8.00'
L25	S86°31'56"E	12.74'
L26	S53°26'56"W	7.45'
L29	S03°28'04"W	7.38'
L30	N86°31'56"W	1.69'
L31	N04°54'20"E	15.03'
L51	N53°26'56"E	7.66'

NOTE:

- ALL LOT CORNERS ARE MARKED WITH 3/4" IRON PIPES AND 2"x2" LOT STAKES OR PK NAIL AND BRASS IF LOT CORNERS LAY IN CONCRETE OR PAVEMENT

LEGEND:

- = SET MAG CAP IN CONCRETE (5)
- = SET 4" DIA. CONCRETE MONUMENT WITH MAG CAP (1)
- = BOUNDARY OF PHASE 1, DIVISION 3
- = PROPERTY LINE
- - - = EASEMENT
- - - = BUILDING SETBACK LINE



Scale 1" = 40'

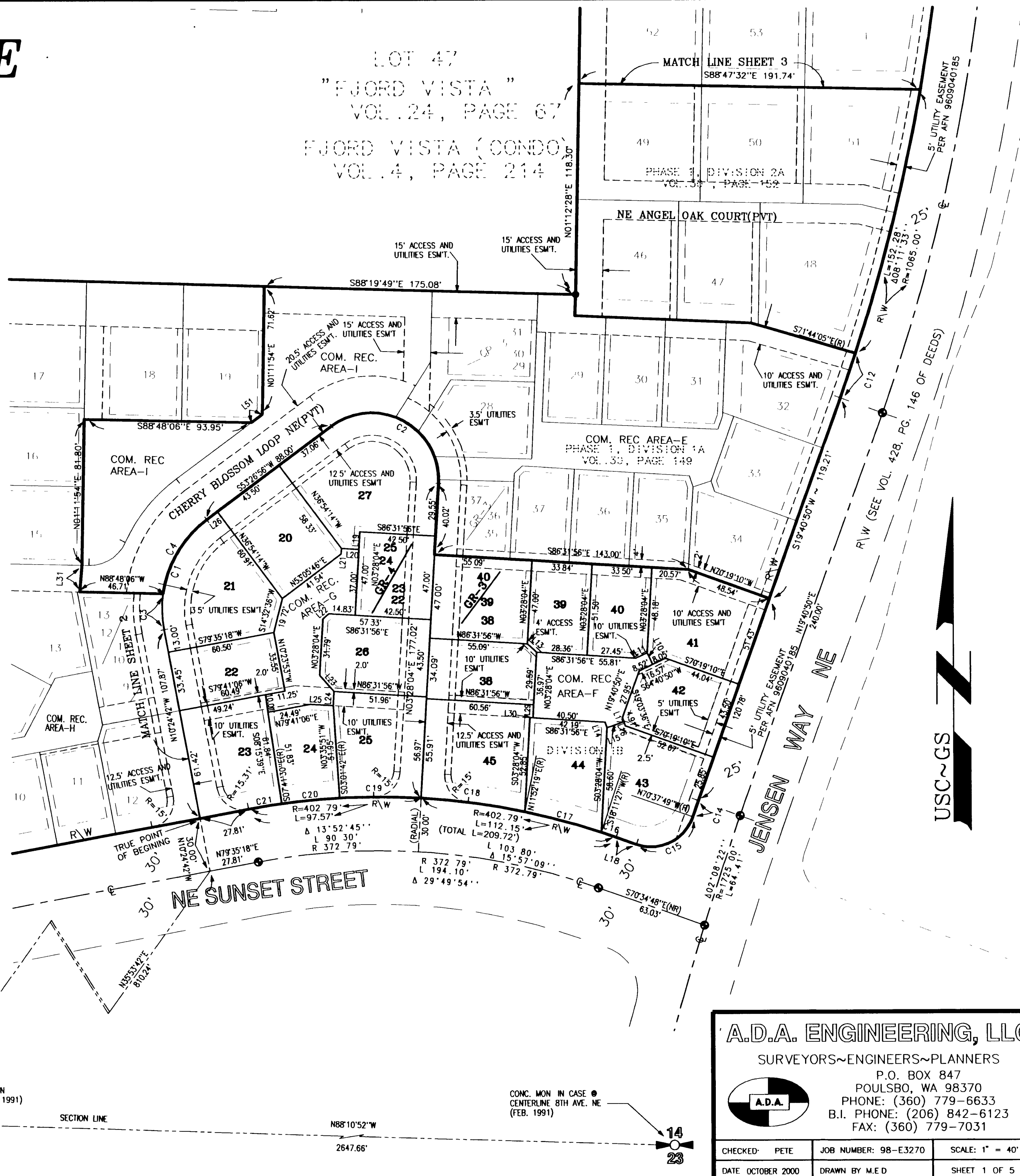


STEEL PIN IN CONC (FEB. 1991)

SECTION LINE

N88°10'52"W

2647.66'



A.D.A. ENGINEERING, LLC

SURVEYORS~ENGINEERS~PLANNERS

P.O. BOX 847
POULSBO, WA 98370
PHONE: (360) 779-6633
B.I. PHONE: (206) 842-6123
FAX: (360) 779-7031



CHECKED: PETE	JOB NUMBER: 98-E3270	SCALE: 1" = 40'
DATE: OCTOBER 2000	DRAWN BY: M.E.D.	SHEET 1 OF 5