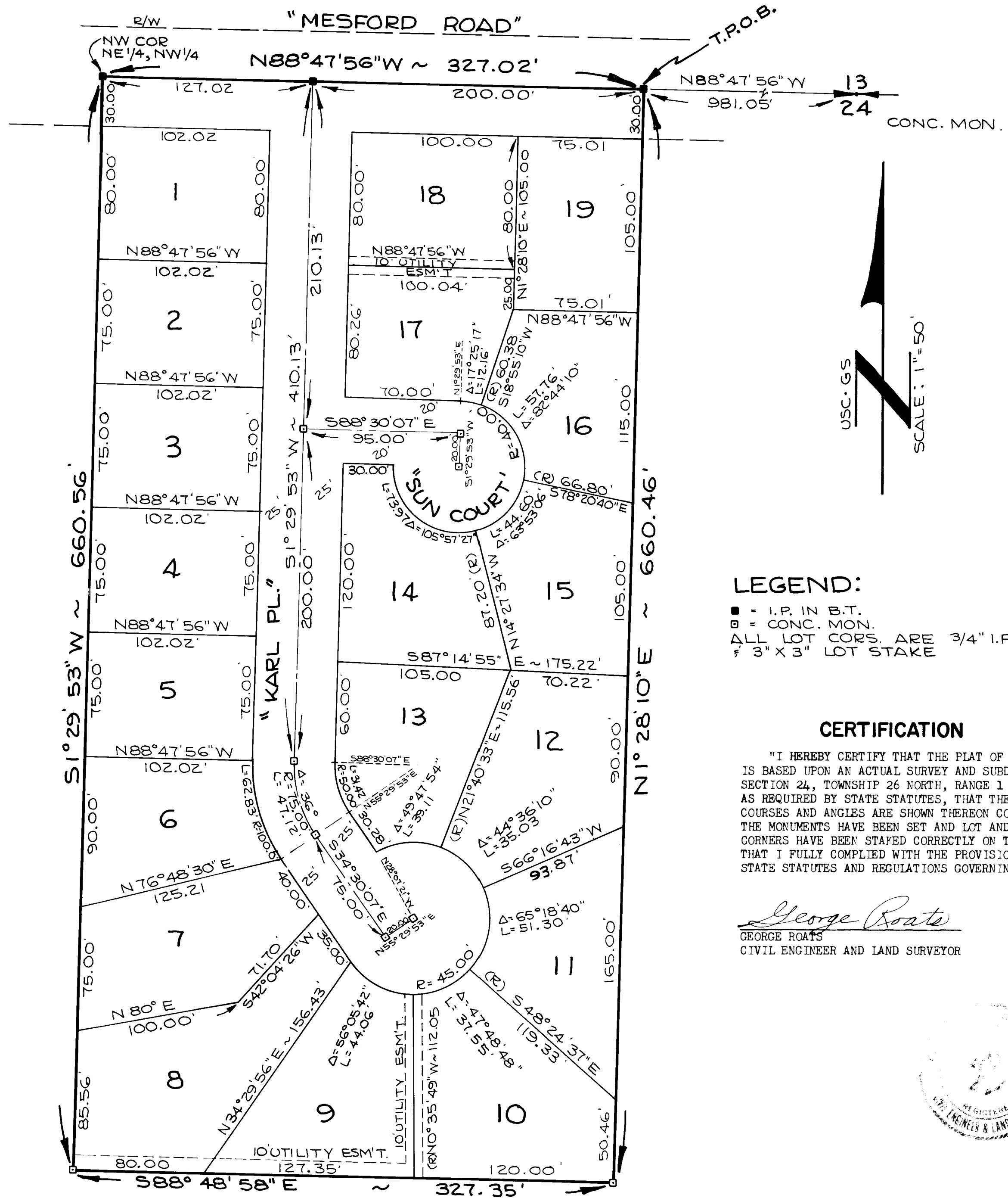


SUNRISE

CITY OF POULSBO
SEC. 24, T.26 N., R. 1E., W.M.
KITSAP CO., WASHINGTON

ROATS ENGINEERING
POULSBO SEQUIM



LEGEND:

- = I.P. IN B.T.
- = CONC. MON.
- △ ALL LOT CORNS. ARE 3/4" I.P.
- ⊕ 3" X 3" LOT STAKE

CERTIFICATION

"I HEREBY CERTIFY THAT THE PLAT OF "SUNRISE", IS BASED UPON AN ACTUAL SURVEY AND SUBDIVISION OF SECTION 24, TOWNSHIP 26 NORTH, RANGE 1 EAST, W.M., AS REQUIRED BY STATE STATUTES, THAT THE DISTANCE, COURSES AND ANGLES ARE SHOWN THEREON CORRECTLY: THAT THE MONUMENTS HAVE BEEN SET AND LOT AND BLOCK CORNERS HAVE BEEN STAYED CORRECTLY ON THE GROUND: THAT I FULLY COMPLIED WITH THE PROVISIONS OF THE STATE STATUTES AND REGULATIONS GOVERNING PLATTING.

George Roats
GEORGE ROATS
CIVIL ENGINEER AND LAND SURVEYOR

