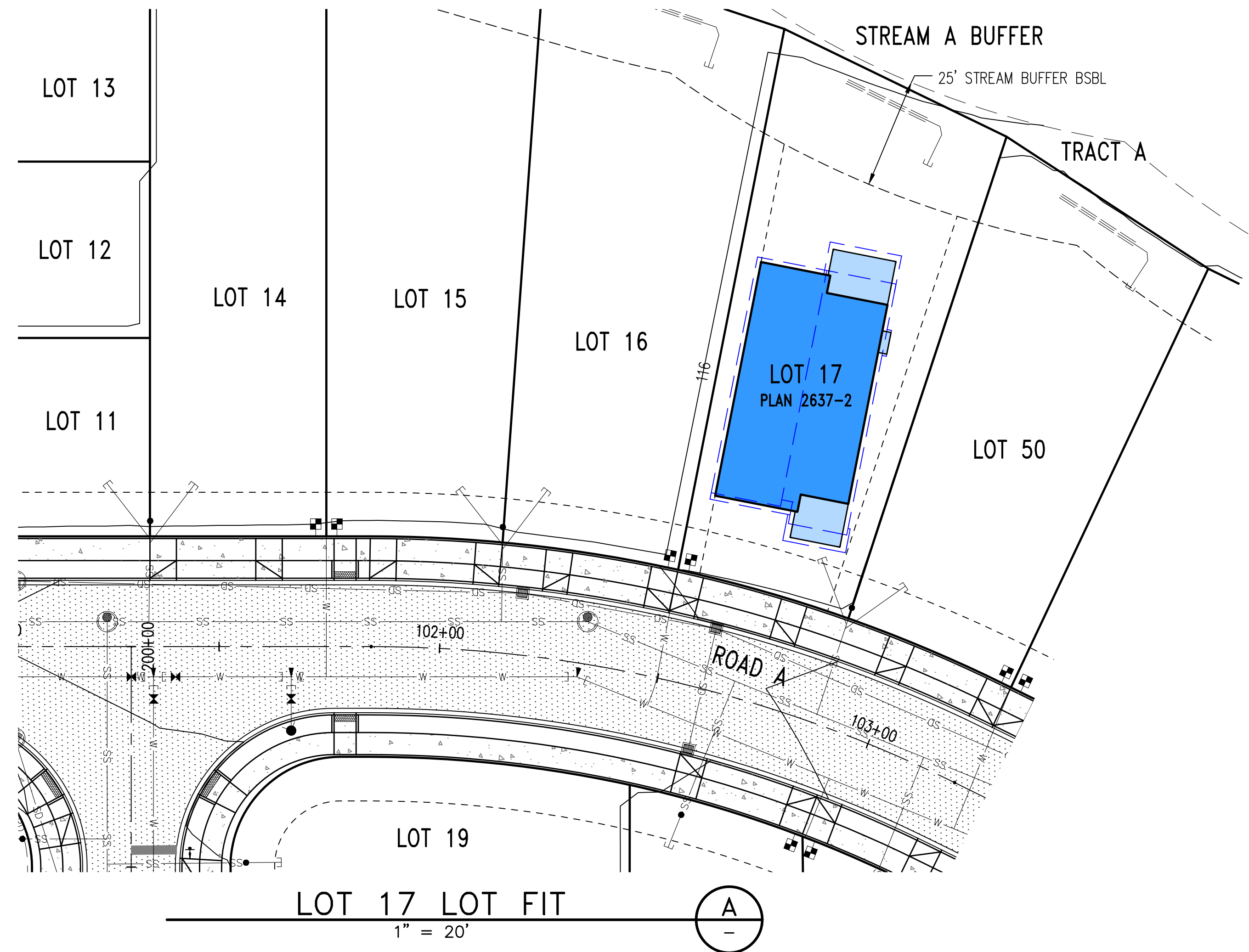


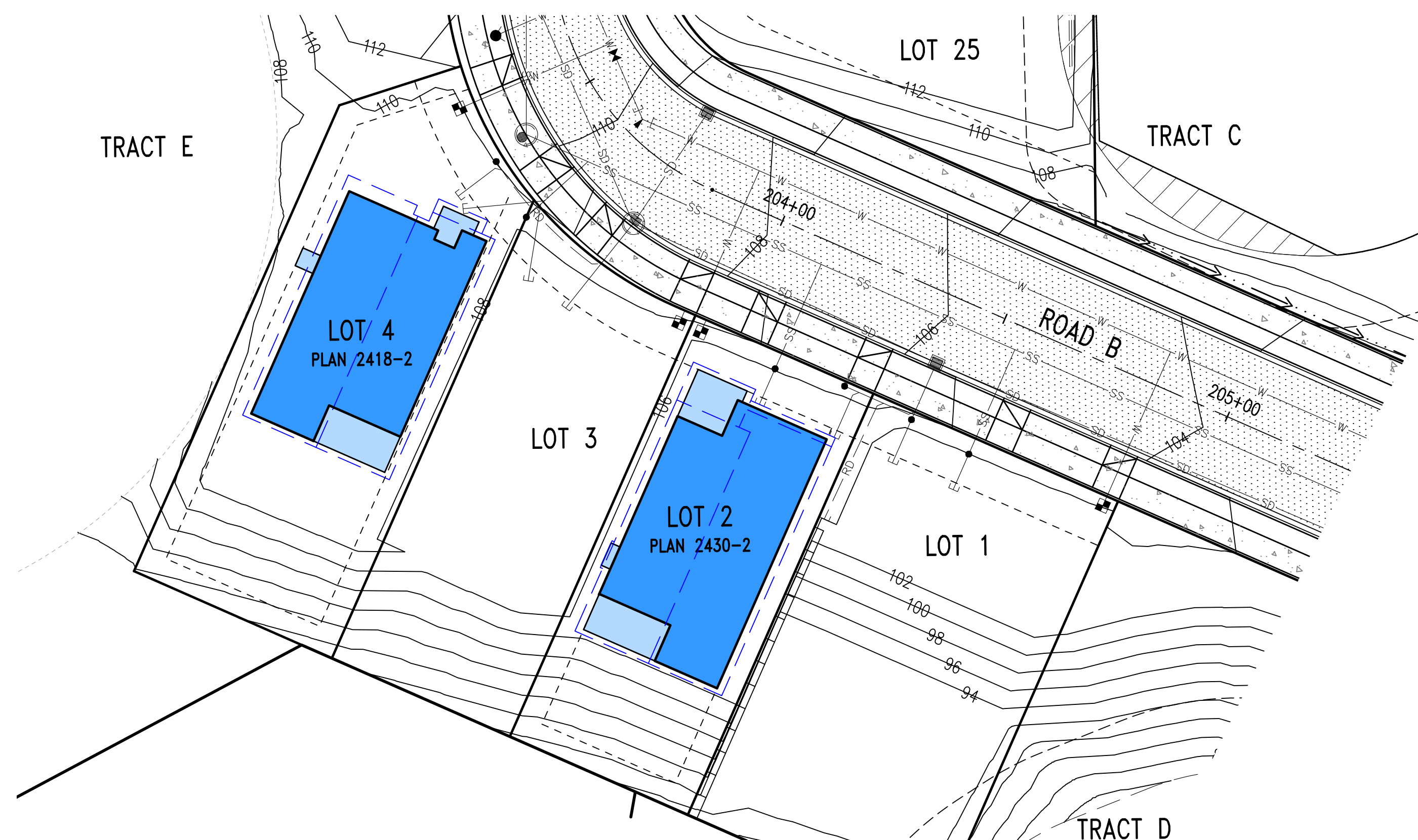
# Exhibit F

## Home Siting “Lot Fit”

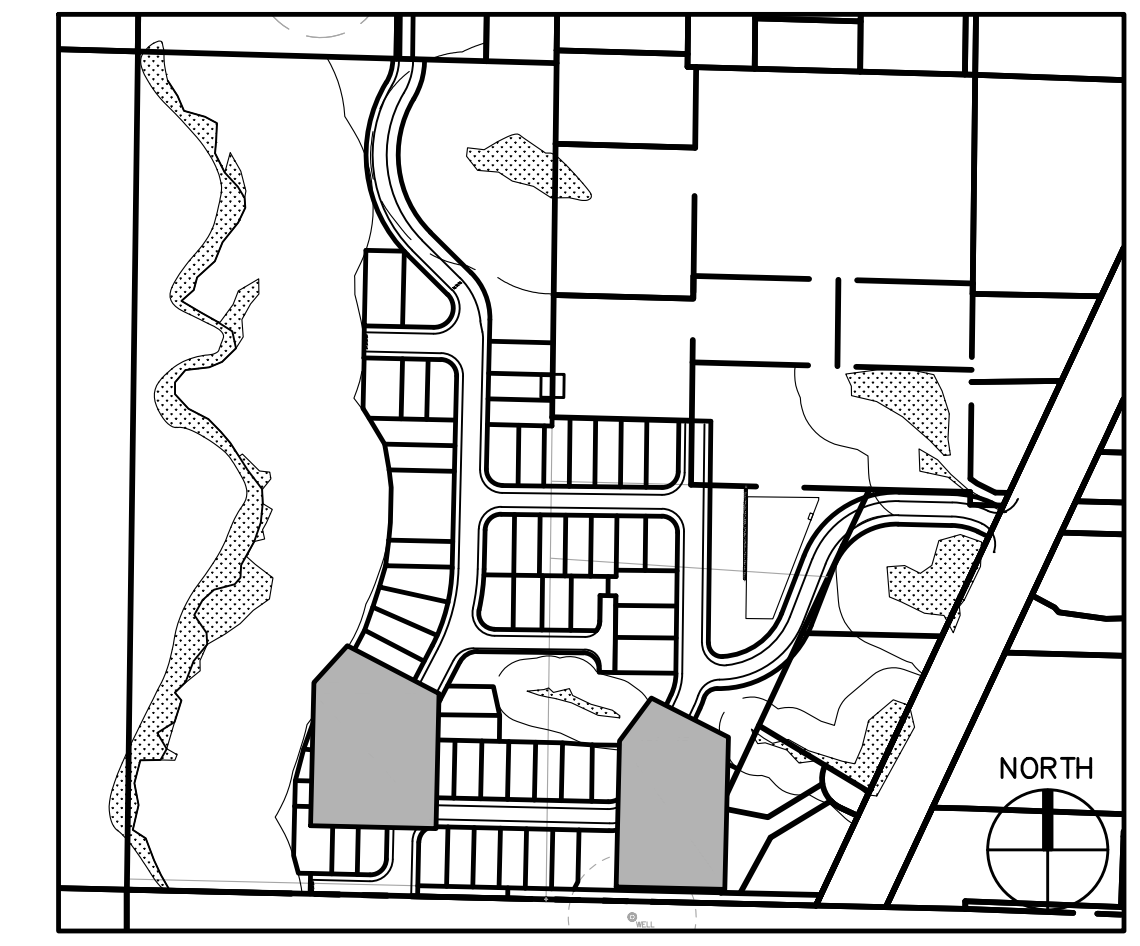
June 2023



LOT 17 LOT FIT  
1" = 20'



LOTS 2 & 4 LOT FIT  
1" = 20'



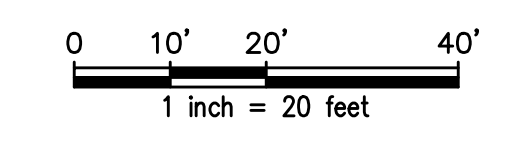
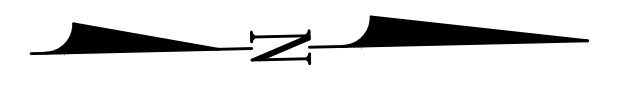
KEY MAP

LEGEND

- PROPOSED PROPERTY LINE
- - - PROPERTY LINE
- - - CENTERLINE
- - - PROPOSED EASEMENT/SETBACK
- SD— STORM DRAIN LINE
- RD— ROOF DRAIN
- W— WATER MAIN
- SS— SEWER MAIN
- SANITARY SEWER MANHOLE
- FIRE HYDRANT
- TYPE 1 CATCH BASIN
- TYPE 2 CATCH BASIN
- 295— FINISHED GRADE CONTOUR
- 100— EXISTING GRADE CONTOUR
- - - WETLAND BUFFER
- CONCRETE PAVING
- ASPHALT PAVING

NOTES

1. GIS DATA AND CITY RECORDS ARE SHOWN FOR EXISTING CONDITIONS. FULL SURVEY WILL BE PROVIDED AND USED FOR EXISTING CONDITIONS FOR CONSTRUCTION DOCUMENT PREPARATION.
2. POSSIBLE HOME FLOOR PLANS ARE SHOWN ON THIS PLAN FOR 6 LOTS.



Jun 17, 2023 3:06pm e:\sec C:\Users\leisy\AppData\Local\Temp\AspPublish\_15144\Lot\_Fits.dwg

1	01/2023	EKC	EKC	JSF	INITIAL PRELIMINARY PLAT SUBMITTAL
2	02/2023	EKC	EKC	JSF	SECOND PRELIMINARY PLAT SUBMITTAL
3	06/2023	EKC	EKC	JSF	THIRD PRELIMINARY PLAT SUBMITTAL
NO.	DATE	BY	CHD.	APPR.	REVISION

DRAWN BY  
RAG  
CHECKED BY  
EKC  
DATE  
JUNE XX, 2023  
JOB No. :2000505

DESIGNED BY  
EKC  
APPROVED BY  
JSF  
SCALE:  
AS NOTED

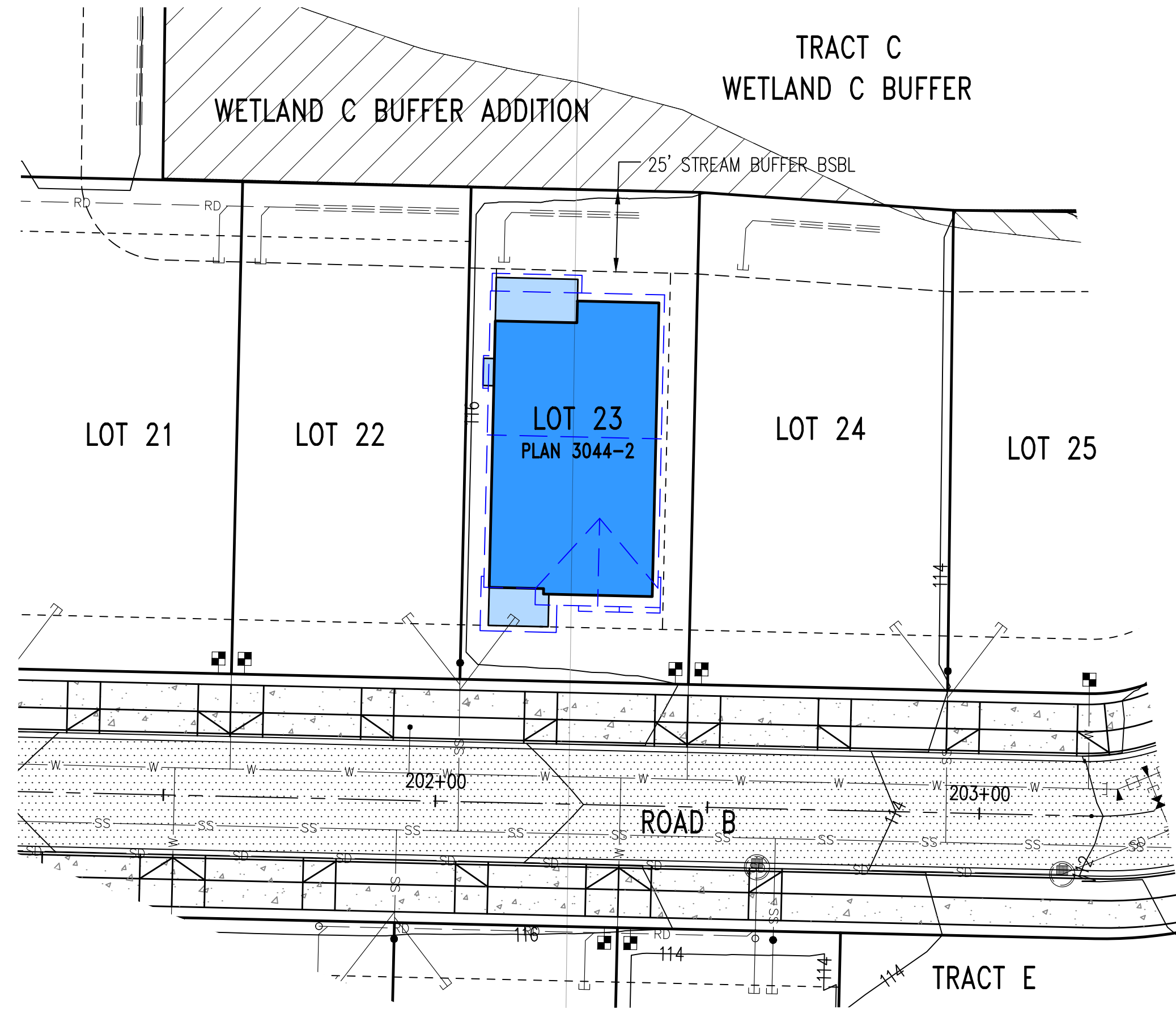
CALL TWO BUSINESS DAYS BEFORE YOU DIG  
1-800-424-5555

**kpff**  
1601 5th Avenue, Suite 1600  
Seattle, WA 98101  
206.622.5822  
www.kpff.com

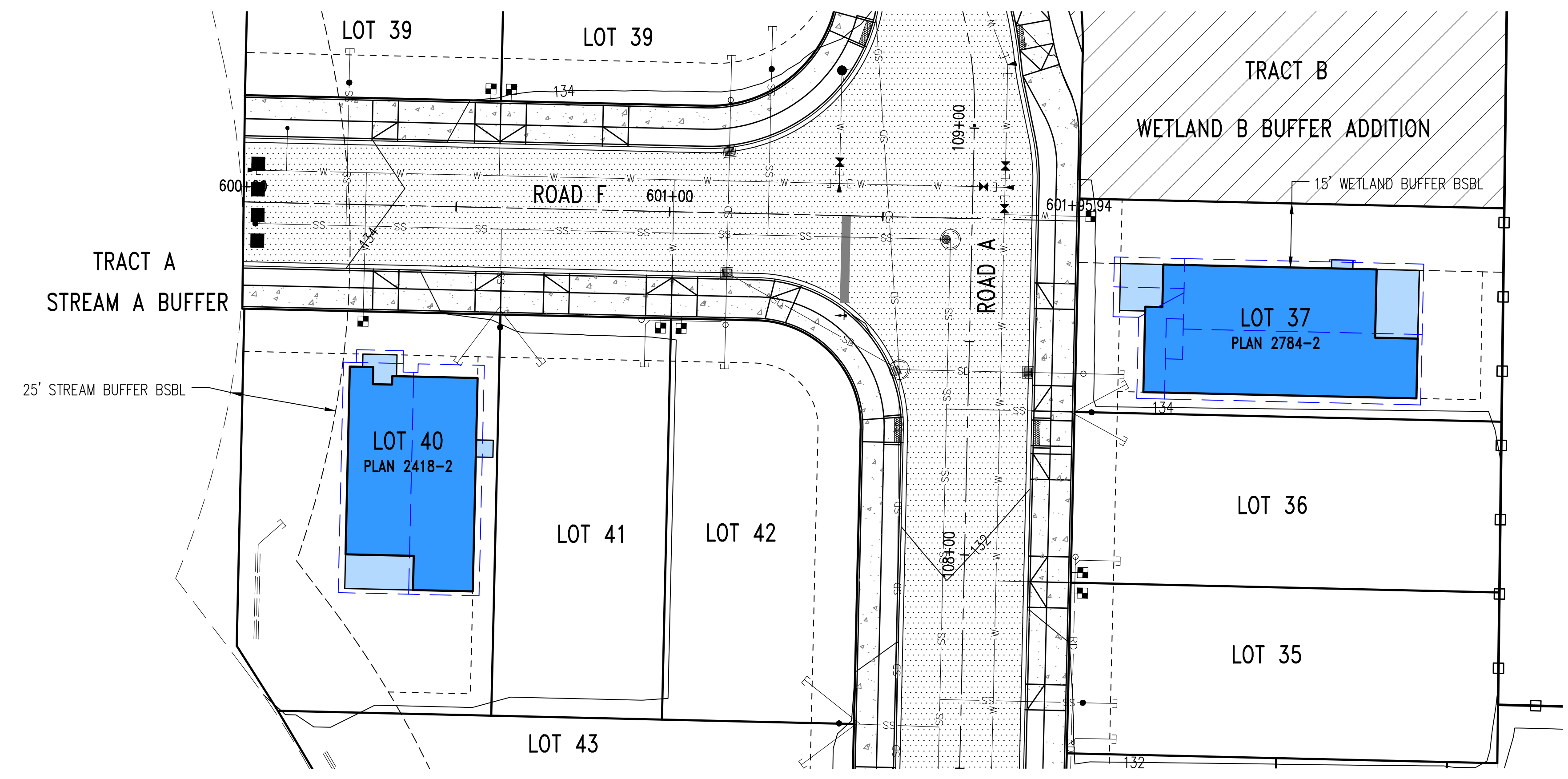
THE PLATEAU AT LIBERTY BAY PRD / ENTITLED FUND TWO, LLC  
POULSBORO, WASHINGTON

PRELIMINARY LOT FITS

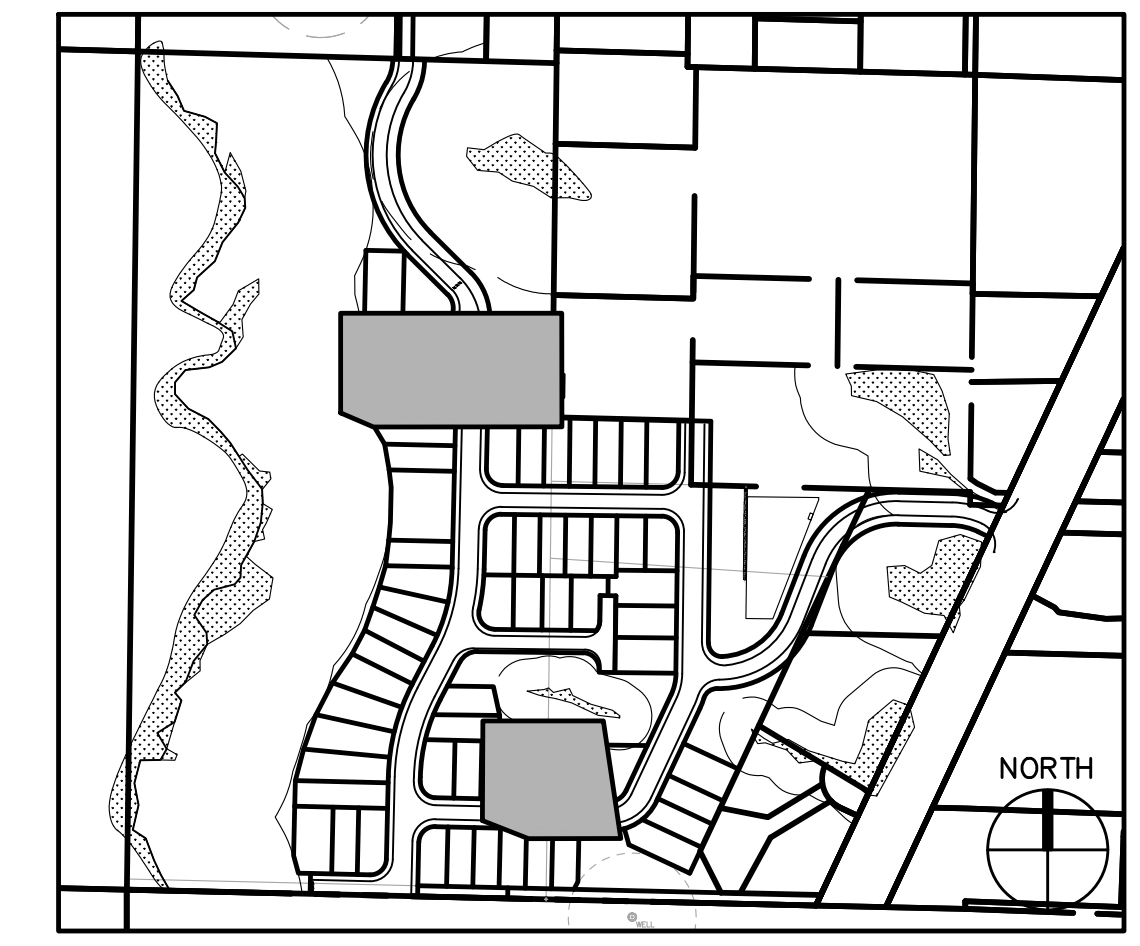
SHEET  
**A**



LOT 23 LOT FIT (C)  
1" = 20'



LOTS 37 & 40 LOT FIT (D)  
1" = 20'



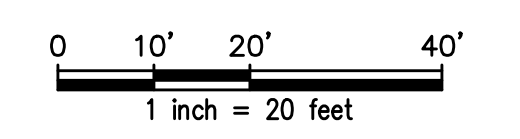
KEY MAP

LEGEND

- PROPOSED PROPERTY LINE
- - - PROPERTY LINE
- - - CENTERLINE
- - - PROPOSED EASEMENT
- SD— STORM DRAIN LINE
- RD— ROOF DRAIN
- W— WATER MAIN
- SS— SEWER MAIN
- SANITARY SEWER MANHOLE
- FIRE HYDRANT
- TYPE 1 CATCH BASIN
- TYPE 2 CATCH BASIN
- 295— FINISHED GRADE CONTOUR
- 295— EXISTING GRADE CONTOUR
- WETLAND BUFFER
- [Pattern] CONCRETE PAVING
- [Pattern] ASPHALT PAVING

NOTES

1. GIS DATA AND CITY RECORDS ARE SHOWN FOR EXISTING CONDITIONS. FULL SURVEY WILL BE PROVIDED AND USED FOR EXISTING CONDITIONS FOR CONSTRUCTION DOCUMENT PREPARATION.
2. POSSIBLE HOME FLOOR PLANS ARE SHOWN ON THIS PLAN FOR 6 LOTS.



Jun 17, 2023 3:06pm e:\sec C:\Users\jefrey\AppData\Local\Temp\AspPublish\_15144\Lot\_Fits.dwg

1	01/2023	EKC	EKC	JSF	INITIAL PRELIMINARY PLAT SUBMITTAL
2	02/2023	EKC	EKC	JSF	SECOND PRELIMINARY PLAT SUBMITTAL
3	06/2023	EKC	EKC	JSF	THIRD PRELIMINARY PLAT SUBMITTAL
NO.	DATE	BY	CHD.	APPR.	REVISION

DRAWN BY RAG	DESIGNED BY EKC
CHECKED BY EKC	APPROVED BY JSF
DATE JUNE XX, 2023	
JOB No. : 2000505	

CALL TWO BUSINESS  
DAYS BEFORE YOU DIG  
1-800-424-5555



SCALE:  
AS NOTED

THE PLATEAU AT LIBERTY BAY PRD / ENTITLE FUND TWO, LLC  
POULSBORO, WASHINGTON

PRELIMINARY LOT FITS

SHEET

B