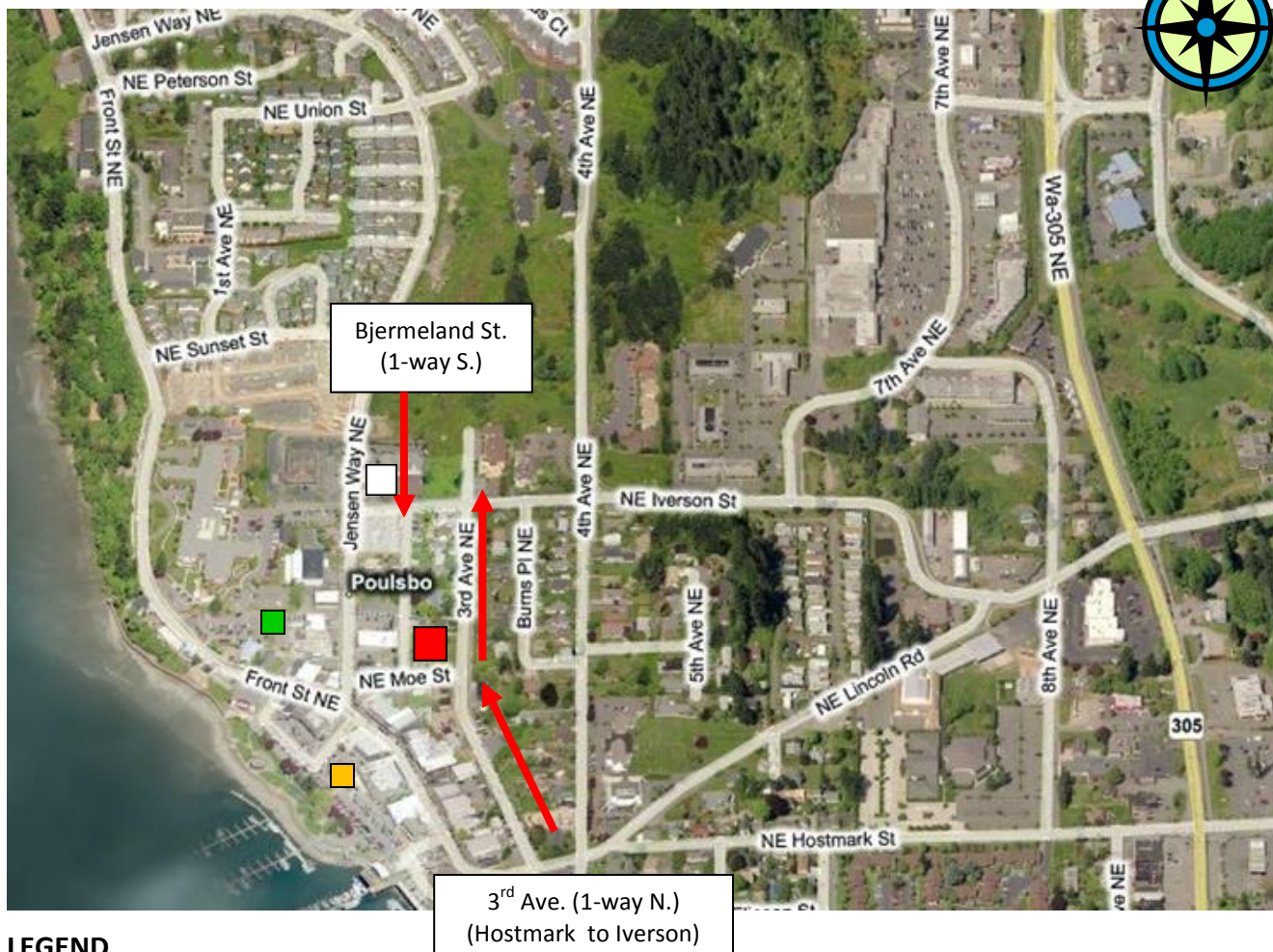




## DOWNTOWN POULSBO PUBLIC PARKING



### LEGEND

- City Hall Garage: 200 NE Moe St. - 29 public parking stalls
- King Olaf Parking Lot - 111 public parking stalls
- Anderson Parkway - 137 public parking stalls
- Poulsbo Post Office - 29 public parking stalls

### PUBLIC PARKING

**City Hall Garage:** Free public parking is located in the underground parking garage of City Hall. Space is limited. Access to the garage is from Bjermeland Street. Although Bjermeland is one-way south, you can turn north from Moe onto Bjermeland for garage access. An elevator is located on the south side of the garage for access to all City Hall floors.

**On-street:** Free parking is available on Moe St. (3-hour limit), 3<sup>rd</sup> Avenue (not posted), and Jensen Way (1-hour limit). There is no public parking on Bjermeland Street.

**King Olaf Parking Lot:** Free parking is available (3-hour limit). The lot is accessible from Front Street or from Jensen Way (via a driveway on the north end of the former City Hall).

**Anderson Parkway:** Free parking (3-hour limit). This lot extends next to the SEA Discovery Center smaller lot (26 parking stalls)

**Post Office:** Free parking is available (3-hour limit). The lot is accessible from from Jensen Way and NE Iverson St.

**There are 171 parallel parking spots on the Front/Moe/Jensen/Third Street.**