



# Planning & Economic Development

200 NE Moe Street | Poulsbo, WA 98370-7347

(360) 394-9748 | fax (360) 697-8269

www.cityofpoulsbo.com | plan&econ@cityofpoulsbo.com

## ARCHAEOLOGICAL FINDS

### WHAT ARE ARCHAEOLOGICAL SITES?

Archaeological sites can range in size and complexity from large permanent villages to single use hunting camps. This region has been occupied by the Suquamish people for upwards of 10,000 years. The way sites were created and preserved varies widely. Archaeological sites can be found anywhere—in forests, orchards, or cities; on beaches or mountain tops, beneath buildings, and even underwater. They can be on public land, tribal reservations, or private property. They may be accidentally uncovered during construction projects or discovered during carefully planned surveys.

It is our goal to promote an ethical stewardship of this land and its history.

### ARCHAEOLOGICAL DOs AND DON'Ts

- Do keep records of artifacts found lying on the surface of your property.
- Do report sites discovered on your property to the **Office of Archaeology and Historic Preservation**. Your report will not trigger land use decisions but will aid in scientific research and preservation planning.
- Do learn more about your site and other nearby sites. Encourage communication with the local Tribal Historic Preservation Officer.
- Don't allow unqualified persons to "collect" or "dig" at your site. Report any unauthorized activities and looting to **State Archaeologist and local police**.
- Don't conduct any earth moving or construction in the immediate vicinity of your site upon discovery of archaeological material.

We encourage you to learn about the archaeological resources on the lands you manage.

### ARTIFACTS TO BE MINDFUL OF

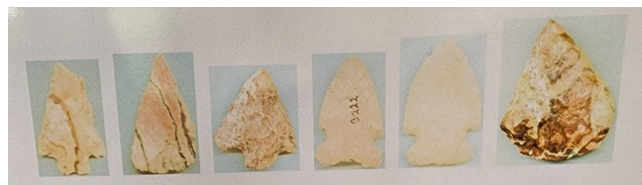
- Fire cracked rock
- Midden

- Projectile points (sometimes called arrowheads)
- Stone lithics
- Bone and antler tools
- Basket fragments

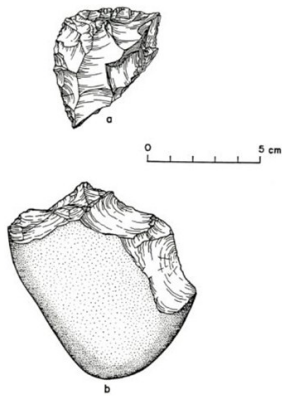
### MIDDEN



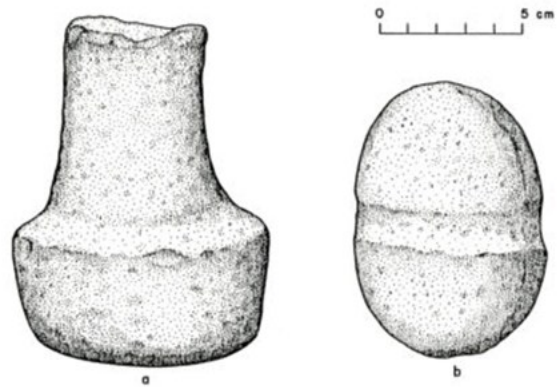
### PROJECTILE POINTS



### FLAKED STONE TOOLS



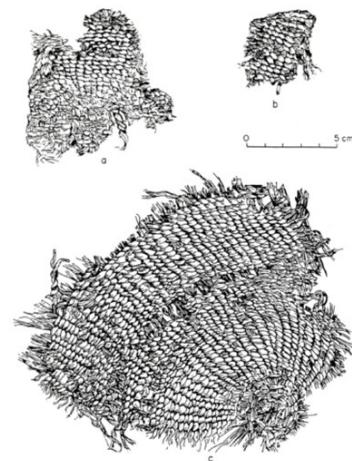
### MAUL AND NET WEIGHT



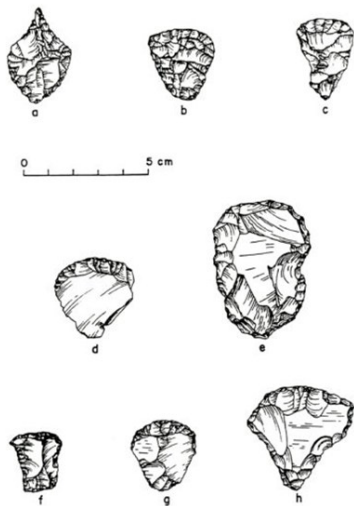
### BONE AND ANTLER TOOLS



### BASKET FRAGMENTS



### DRILLS AND SCRAPPERS



### ANTLER WEDGE



Disclaimer: this handout should not be used as a substitute for codes and regulations. The applicant/property owner is responsible for compliance with all code and rule requirements, whether or not described here. Please see the City of Poulsbo Municipal Code for complete text and requirements.

**Suquamish Tribe Contacts:**

Stephanie Trudell—Archaeologist

[strudel@suquamish.nsn.us](mailto:strudel@suquamish.nsn.us)

Angee Harrington—Collections Manage Suquamish Museum

[aharrington@suquamish.nsn.us](mailto:aharrington@suquamish.nsn.us)

